



3CB SHOTGUN OWNER'S MANUAL

12 cal



20 ga



.410 cal



**READ AND UNDERSTAND ALL OF THE
CAUTIONS AND PROPER HANDLING
PROCEDURES AND INSTRUCTIONS OUTLINED
IN THIS BOOKLET BEFORE USING YOUR NEW
FIREARM.**

www.eternalarms.com.tr

Thank you for buying an Eternal single-barrel shotgun, and welcome to the family.

We believe that safe firearms handling is the most important consideration of anyone who uses firearms and ammunition. Please take a few minutes to thoroughly read and understand this instruction manual included with this shotgun.

You should completely understand this manual before you practice loading, unloading and firing with live ammunition.



REMEMBER, FIREARMS SAFETY DOES DEPEND ON YOU!

Always keep this manual with your firearm. Make sure you understand all the warnings, operation instructions and safety procedures. When you lend, give or sell the firearm, be sure this manual goes with it.

The below Commandments of Firearm Safety should be etched in your memory forever. Let them govern your action wherever and whenever you're involved with firearms in the field, on the range, or in your home. Please take the time to review and understand these rules.

1. Always keep the muzzle pointed in a safe direction. Watch the muzzle at all time, never point a gun, accidentally or intentionally, at any person or anything you do not intend to shoot. Identify the target before shooting.
2. Always treat gun as if it is loaded – it may be!
3. Keep your finger off the trigger while operating the action and at all other times until you are ready to shoot.
4. Keep the safety “on” or in the “safe” position at all times until you're ready to fire. Do not rely on your gun's safety, the safety on any gun is a mechanical device and is not intended as a substitute for common sense or safe gun handling.
5. Learn how your gun functions and handles. If you do not thoroughly understand the proper use and care of your gun, seek the advice of someone who is knowledgeable
6. Do not alter or modify any part of the firearm.
7. Store guns unloaded, separate from any ammunition, and out of the reach of children
8. Be sure the barrel is clear of any obstructions before loading. Make it a habit to check the barrel every time before loading.

9.Be sure you have and use the proper ammunition. A 20 gauge shell will enter a 12 gauge chamber far enough so that a 12 gauge shell can be loaded behind it. Also, a 3" shell may fit into 2 ¾ "chamber, but the crimp at the mouth of the shell will unfold into the forcing cone. If either of these things occurs and you fire the gun, the gun will explode, damaging the gun and possibly causing serious injury or death to you and those around you.

10.Wear protective shooting glasses and adequate ear protection when shooting.

11.Never climb or jump over anything, such as a tree, fence with a loaded gun.

Open the barrel, remove the shells and hand the gun to someone else or place it on the ground on the other side of the obstacle before crossing it yourself. Do not lean a gun against a tree or other object; it could fall and possibly discharge.

12.Do not shoot at a hard surface or at water. Bullet and shot can ricochet or bounce off and travel in unpredictable directions with great velocity.

13.Never transport a loaded gun. DO NOT place a loaded gun into a vehicle. The gun should be unloaded and placed into a case when not in use.

14.Never drink alcoholic beverages before or during shooting.



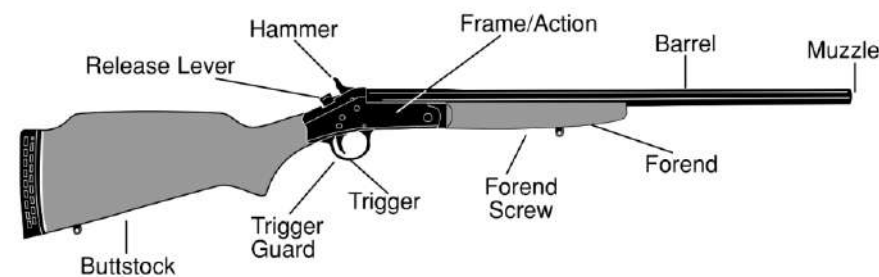
● READ AND FULFILL ALL WARNINGS

Now that you're a gun owner you have the obligation to help ensure that shooting sports are safe for everyone participants and bystanders alike. You can do that by practicing these principles of firearm safety and passing them on to others especially new shooters. Set an example for beginners. Be a guide to their safe entry into the exciting world of shooting sports. Invest your time and patience for the love of the sport and for its future. After all, it's your love of the sport that led you to buy a new Eternal shotgun.

Firearm ownership is a right and privilege. It's a privilege which carries with it a personal responsibility to use your firearm in a way which will ensure your safety and the safety of others. The preservation of this right and privilege depends on the personal commitment of you and your fellow shooters to the safe and responsible use of firearms. Let the Commandments of Firearm Safety outlined in this book guide you at all times. Teach and promote these rules whenever you can. Remember, firearm safety depends on you! That's the only way to really enjoy your new firearm and to preserve sport shooting as we know it today.

This manual contains operating instructions. Before using the gun please read this manual carefully. Failure to follow the instructions and warnings in this manual can cause accidents resulting in injury or death.

WARNING : Keep this firearm out of the reach of children; unauthorized individuals and others unfamiliar with the safe handling of firearms.

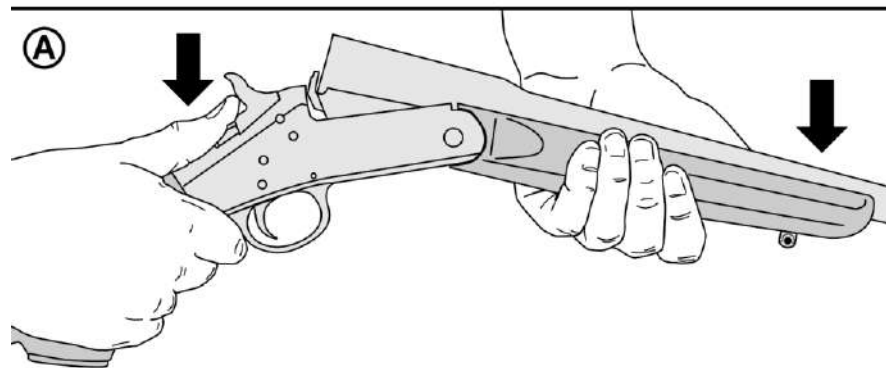


Refer to the drawing on left side for location of the components named in this manual. With the firearm pointed to the safe direction, press the release lever and while holding it down apply downward force on the barrel in the area of the forend to open the action. (Fig A)

Make sure the firearm is not loaded, and wipe all exterior surfaces with a clean soft cloth to remove excess oil.

How the Firing Mechanism Operates

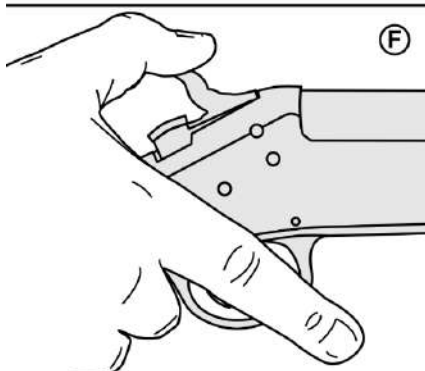
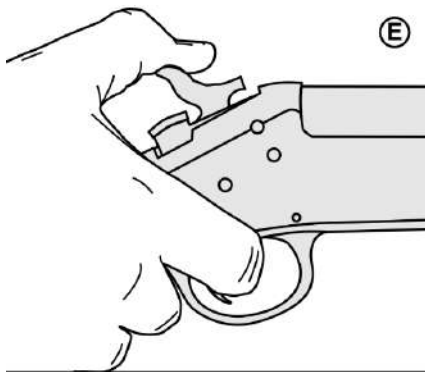
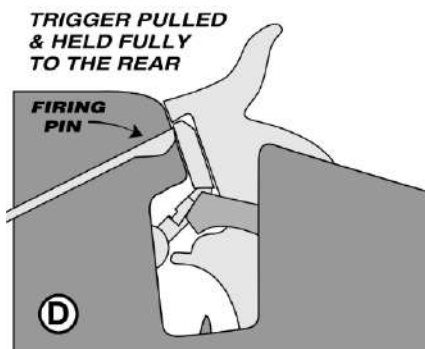
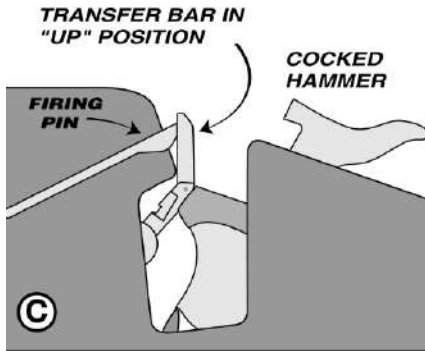
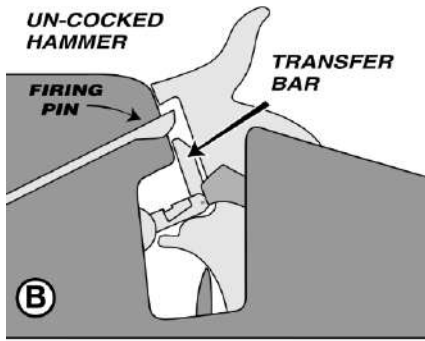
When the hammer is in the fully forward (un-cocked) position and



the trigger is fully forward, there is no contact between the hammer and the firing pin (Fig B). This is the normal carrying position. When the hammer is manually pulled back fully into the cocked position, the transfer bar moves upward to form a bridge between the hammer and the firing pin (Fig C). When the hammer is in the cocked position and the trigger is pulled and held, the hammer falls, striking the transfer bar, transferring the hammer blow to the firing pin (Fig D). As soon as the trigger is released, the transfer bar is pulled down, creating a void between the hammer and the firing pin (See B).

Loading and Firing

- Use only ammunition of the correct gauge as stamped on the barrel. Never use shells that are longer than designated on the barrel, as this would create a serious safety hazard. Shells of the correct gauge that are shorter than the stamped chamber length designation are safe to use. Make sure the hammer is forward (un-cocked). Open the action (Fig A). Look through the bore to be sure that there are no obstructions. Place the proper shell in the chamber and close the action with enough force to assure it is securely locked in place, and cannot be opened without pressing the release lever. (You will hear a distinct "click" when the action locks closed.) Insure that the action is closed and locked before proceeding. While avoiding contact with the trigger, raise the firearm and place the stock securely against your shoulder. Pull the hammer fully to the rear to the cocked position. Take careful aim and pull the trigger to fire.



NOTICE : This firearm should never be dry fired, as damage could occur to the barrel and/or firing pin. If you decide not to fire after cocking the hammer, carefully lower the firearm from your shoulder and keep the muzzle pointed in a safe direction. Carefully hold the hammer back securely with your thumb and pull the trigger (Fig E). Slowly let the hammer move forward and release the trigger (Fig F). Continue to guide the hammer down until it is fully forward. (Fig B).

How to Unload Your Firearm

This firearm has an "automatic ejection" feature which ejects both fired and unfired shells when the action is opened. To eject a fired casing or an unfired round of ammunition from the firearm, first point the muzzle in a safe direction and ensure no one is in the ejection path. Press the release lever and open the firearm fully (Fig A). The empty casing or unfired round will automatically be ejected from the firearm. Using extreme care, fired or unfired cartridges can be caught as they are ejected from the chamber. (Always handle live ammunition carefully to avoid accidental discharge.)

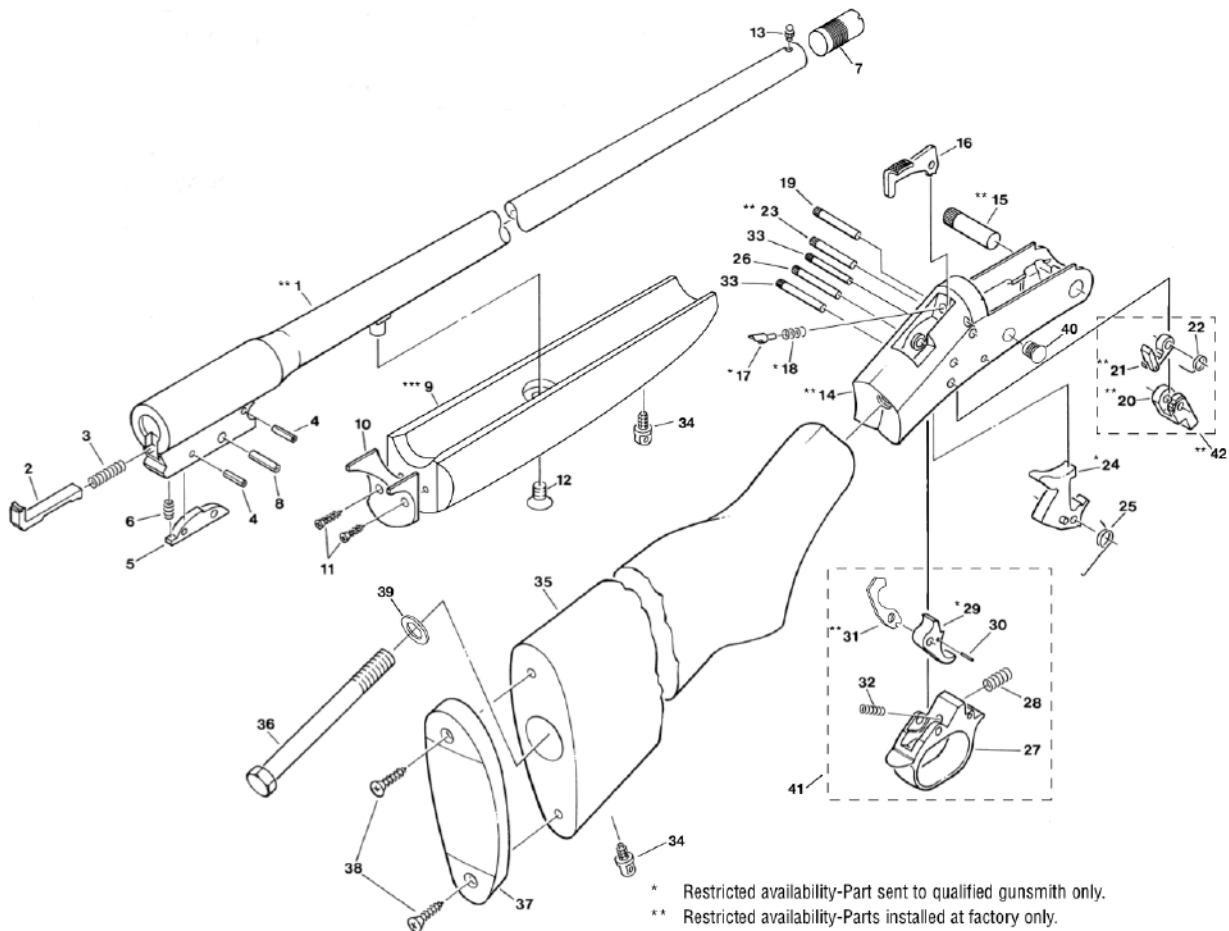
•**WARNING:** In case of a misfire, keep the firearm pointed in a safe direction and wait one minute before opening firearm

Guide to Firearm Safety

1. Read and understand the owner's manual before using a firearm.
2. Handle every firearm as if it were loaded and ready to fire.
3. Control the muzzle, and never point a firearm at anything you don't want to shoot.
4. Keep the safety on SAFE until you are ready to shoot.
5. Unless you are hunting, carry your firearm empty, with the action open.
6. Do not lean a loaded firearm against anything.
7. Do not bump, drop or jar a loaded firearm.
8. Avoid alcoholic beverages and drugs before and during shooting.
9. Use only ammunition of the correct gauge, caliber, size and bullet shape for your firearm.
10. Do not use damaged, dirty, modified, or improperly handloaded ammunition.
11. Keep the barrel and mechanism of the firearm free of obstructions.
12. Do not use a firearm that fails to function properly. Do not try to force a jammed action.
13. Be sure no one is in the path of ejecting shells or cartridges.
14. Do not interchange parts between firearms, and be sure disassembly and reassembly are correct and complete.
15. Before cleaning, be sure the chamber, action and magazine are completely unloaded.
16. Unload firearms before storing, transporting, or leaving unattended.

17. Children are attracted to and can operate firearms that can cause severe injuries or death. Prevent child access by always keeping guns locked away and unloaded when not in use.

NOMENCLATURE



ILL. NO.	PART NAME
**1	BARREL
2	EJECTOR
3	EJECTOR SPRING
4	PIN EJECTOR LATCH
5	EJECTOR LATCH
6	SPRING EJECTOR LATCH
7	CHOKE
8	EJECTOR STOP PIN
***9	FOREND
10	SPACER-FOREND
11	SCREW-FOREND SPCR.
12	SCREW-FRD.-SHORT
13	SIGHT-FRONT
**14	FRAME
**15	JOINT PIN FINISH
16	RELEASE LEVER
*17	FIRING PIN
*18	SPRING-FIRING PIN
19	RELEASE LEVER PIN
**20	LIFTER
**21	STRIKER ASS'Y.

ILL. NO.	PART NAME
22	LIFTER SPRING
**23	STRIKER PIN
*24	HAMMER ASS'Y.
25	HAMMER SPRING
26	TRIGGER GRD. PIN
27	TRIGGER GRD.
28	BARREL CATCH SPRING
*29	TRIGGER
30	TRIG. EXTEN PIN
**31	TRIG EXTENSION
32	SPRING TRIGGER
33	HMR, TRIG, & CATCH PIN
34	SWIVEL
35	STOCK
36	SCREW TANG
37	RECOIL PAD
38	BUTT PLATE
39	SCREW BUTT PLATE
40	WASHER TANG SCREW
41	VIEW HOLE PIN
42	TRIGGER GUARD ASS'Y.
**42	BRL. CATCH STRIKER ASS'Y.

LIMITED WARRANTY

TWO YEAR LIMITED WARRANTY AGAINST DEFECTS IN MATERIAL & WORKMANSHIP

This firearm warranty is good only to the ORIGINAL OWNER who **must** be received by the company WITHIN TWO (2) YEARS from the date of purchase. Normal wear, or damage resulting from neglect, abuse, alteration, or repairs not made or authorized by Eternal Arms. Use of non original parts are not covered by the warranty.

CARE AND CLEANING

Before beginning the cleaning process, check to ensure the shotgun is unloaded. You should wear eye protection, such as shooting glasses or goggles.

1. Obtain a quality shotgun cleaning kit and thoroughly review the manufacturer's instruction
2. To clean the barrel , select the correct caliber cleaning brush and attach it to a cleaning rod.
3. Dampen the brush with gun cleaning solvent and then push the brush through the barrel several times.
4. Remove the brush and attach a correctly sized cloth cleaning patch to the cleaning rod and push it through the barrel several times to remove loosened fouling.
5. Repeat this process with the brush and cleaning patches until a final patch comes out clean after swabbing the bore. Lightly oil the bore.
6. Remove shooting residue from the shotgun's action parts and outer surfaces by wiping them with a soft cloth dabbled in gun cleaning solvent. Then be sure to remove all excess solvent and dry them.
7. Finally, wipe down all outer surfaces with a soft cloth dipped in a good quality gun oil.

WARNINGS :

There may be sharp edges on parts of the firearm. Keep your fingers protected by wearing a pair of protective gloves when cleaning. Excessive use of cleaning solvents or lubricants can adversely affect your shotgun's functioning. Wipe the inside of the barrel dry before firing and ensure that it is free of obstructions. Handling ammunition and cleaning firearms results in exposure to lead and other substances that can pose health risks. Wash your hands and face after firing your shotgun or after cleaning it.

STORAGE

Clean thoroughly and oil your gun before storage. Store the gun in a case to prevent scratches and dents. Store your shotgun in a dry place to prevent corrosion. Store the gun away from children and in a place where it cannot be obtained by those unauthorized to use it. Always store gun unloaded and separately from any ammunition.

READ AND UNDERSTAND ALL OF THE CAUTIONS AND PROPER HANDLING PROCEDURES OUTLINED IN THIS BOOKLET BEFORE USING YOUR NEW SHOTGUN.

DO NOT, UNDER ANY CIRCUMSTANCES, ALTER THE TRIGGER, SAFETY OR OTHER PARTS OF THE FIRING MECHANISM OF THIS OR ANY OTHER SHOTGUN. FAILURE TO OBEY THIS WARNING MAY RESULT IN INJURY OR DEATH TO YOURSELF OR OTHERS.

IF YOUR SHOTGUN SHOULD REQUIRE SERVICE OR REPAIRS, PLEASE CONTACT YOUR DEALER AT FIRST. FOR OTHER TECHNICAL QUESTIONS ABOUT YOUR SHOTGUN, YOU MAY CONTACT US DIRECTLY;



FACTORY:

Hacıakif Mah. Ozdilek Cad. 86/B , Beysehir

42700 KONYA

TURKEY

export@eternalarms.com.tr

www.eternalarms.com.tr