



ETERNAL ATTACKER  
MAGAZINE FED  
SEMI-AUTO SHOTGUN  
OWNER'S MANUAL



READ AND UNDERSTAND ALL OF THE CAUTIONS AND  
PROPER HANDLING PROCEDURES AND INSTRUCTIONS  
OUTLINED IN THIS BOOKLET BEFORE USING YOUR  
NEW FIREARM.

Thank you for buying an Eternal magazine fed semi-action shotgun, and welcome to the family.

We believe that safe firearms handling is the most important consideration of anyone who uses firearms and ammunition. Please take a few minutes to thoroughly read and understand this instruction manual included with this shotgun.

You should completely understand this manual before you practice loading, unloading and firing with live ammunition.



### **REMEMBER, FIREARMS SAFETY DOES DEPEND ON YOU!**

Always keep this manual with your firearm. Make sure you understand all the warnings, operation instructions and safety procedures. When you lend, give or sell the firearm, be sure this manual goes with it.

The below Commandments of Firearm Safety should be etched in your memory forever. Let them govern your action wherever and whenever you're involved with firearms in the field, on the range, or in your home. Please take the time to review and understand these rules.

1. Always keep the muzzle pointed in a safe direction. Watch the muzzle at all time, never point a gun, accidentally or intentionally, at any person or anything you do not intend to shoot. Identify the target before shooting.
2. Always treat gun as if it is loaded – it may be!
3. Keep your finger off the trigger while operating the action and at all other times until you are ready to shoot.
4. Keep the safety “on” or in the “safe” position at all times until you're ready to fire. Do not rely on your gun's safety, the safety on any gun is a mechanical device and is not intended as a substitute for common sense or safe gun handling.
5. Learn how your gun functions and handles. If you do not thoroughly understand the proper use and care of your gun, seek the advice of someone who is knowledgeable
6. Do not alter or modify any part of the firearm.
7. Store guns unloaded, separate from any ammunition, and out of the reach of children
8. Be sure the barrel is clear of any obstructions before loading. Make it a habit to check the barrel every time before loading.

- 9.** Be sure you have and use the proper ammunition. A 20 gauge shell will enter a 12 gauge chamber far enough so that a 12 gauge shell can be loaded behind it. Also, a 3" shell may fit into 2 ¾ "chamber, but the crimp at the mouth of the shell will unfold into the forcing cone. If either of these things occurs and you fire the gun, the gun will explode, damaging the gun and possibly causing serious injury or death to you and those around you.
- 10.** Wear protective shooting glasses and adequate ear protection when shooting.
- 11.** Never climb or jump over anything, such as a tree, fence with a loaded gun. Open the barrel, remove the shells and hand the gun to someone else or place it on the ground on the other side of the obstacle before crossing it yourself. Do not lean a gun against a tree or other object; it could fall and possibly discharge.
- 12.** Do not shoot at a hard surface or at water. Bullet and shot can ricochet or bounce off and travel in unpredictable directions with great velocity.
- 13.** Never transport a loaded gun. DO NOT place a loaded gun into a vehicle. The gun should be unloaded and placed into a case when not in use.
- 14.** Never drink alcoholic beverages before or during shooting.



### **READ AND FULLFILL ALL WARNINGS**

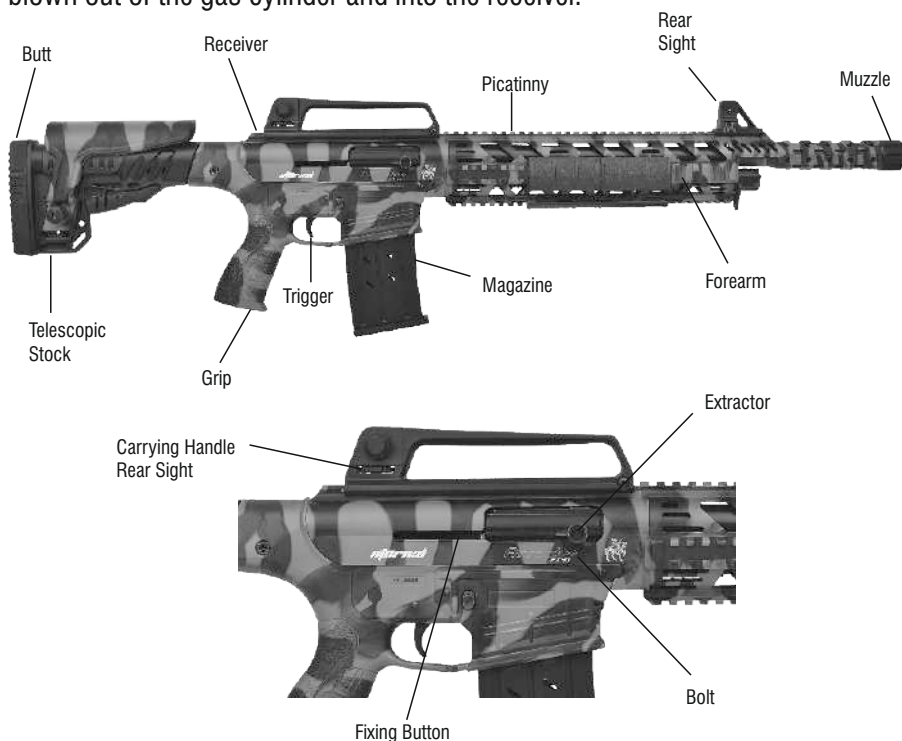
Now that you're a gun owner you have the obligation to help ensure that shooting sports are safe for everyone participants and bystanders alike. You can do that by practicing these principles of firearm safety and passing them on to others especially new shooters. Set an example for beginners. Be a guide to their safe entry into the exciting world of shooting sports. Invest your time and patience for the love of the sport and for its future. After all, it's your love of the sport that led you to buy a new Eternal shotgun.

Firearm ownership is a right and privilege. It's a privilege which carries with it a personal responsibility to use your firearm in a way which will ensure your safety and the safety of others. The preservation of this right and privilege depends on the personal commitment of you and your fellow shooters to the safe and responsible use of firearms. Let the Commandments of Firearm Safety outlined in this book guide you at all times. Teach and promote these rules whenever you can. Remember, firearm safety depends on you! That's the only way to really enjoy your new firearm and to preserve sport shooting as we know it today.

## ABOUT YOUR MAGAZINE FED SEMI-AUTO SHOTGUN

The Eternal magazine fed semi-auto shotgun is gas operated. It is capable of six (5+1) or eleven (10+1) in rapid succession with each pull of trigger. Upon firing, high-pressure gas from behind the shot charge passes through two ports in the barrel, through the gas bracker and into gas cylinder. High-pressure gases force the gas piston rearward, applying pressure to the piston rod. As the piston rod moves rearward, it pushes the bolt assembly rearward, operating the action. As the bolt assembly moves rearward, it recocks the hammer, and ejects the fired shell. After full rearward travel, the bolt assembly returns forward, picking up a new shell from the magazine and chambers it automatically. After the last shell has been fired, the bolt assembly locks to the rear, instead of returning forward. This facilitates speedy reloading. The short-stroke of the gas piston along with the

snug, gas sealing fit of the piston rod limits the amount of combustion gases blown out of the gas cylinder and into the receiver.



## ASSEMBLY INSTRUCTIONS

Your new magazine fed semi-auto shotgun is packed dismounted in its box, with the barrel removed and the forearm still attached to the magazine tube.

**WARNING:** It is important to follow the exact sequence for assembly steps in order to properly assemble your shotgun always place the “safety” in the “SAFE” position before beginning assembly procedures.

1. Unscrew the front handguard secure cap and remove it.
2. Pull the handguard forward to remove it from the body.
3. Remove the barrel fixing nut but you do not need to remove gas regulator nut and spring.
4. Pull the bolt to the rear slightly and remove the barrel as you are letting the bolt slide forward. Slowly release the bolt to clear the recoil spring / bolt carrier as the barrel comes out.
5. Turn the ratchet downward to release the carrier.
6. Remove the Butt pad using a screwdriver to access the upper receiver retention bolt in the void of the buttstock.
7. Insert Allen socket into upper receiver retention bolt and loosen the bolt 4 full turns. Remove the ratchet and lightly tap the extension and socket to push the retention bolt forward. After the upper receiver starts to separate, loosen the bolt 2 to 3 more turns. Gently tap the extension to further separate the upper receiver from the buttstock. You will note an expanding gap as you do this. When the widening of the gap is around  $\frac{1}{8}$  inch, you can remove the upper receiver retention bolt and washer. Slightly compress and hold the recoil spring on the operational rod with one hand; this keeps the bolt from pushing forward and damaging the feed ramp. Use your other hand to help separate the upper receiver from the buttstock/lower receiver. As the upper receiver separates, lift the receiver up and off. This allows the bolt to clear the feed ramp on the lower receiver.

**AFTER THE BARREL HAS BEEN REMOVED FROM YOUR GUN, LEAVE THE BOLT IN THE OPEN POSITION . DO NOT PRESS THE CARRIER RELEASE BUTTON.**



**AFTER SHOOTING, IMMEDIATELY PLACE THE SAFETY IN THE “SAFE” POSITION**

### **USAGE OF CHOKE TUBES**

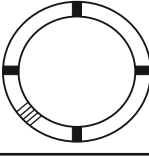
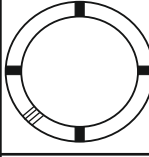
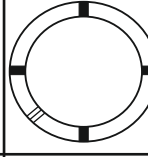
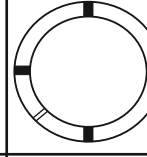
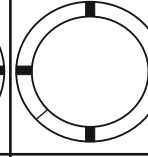
There are 3 different screw-in (inner) chokes that can be used on your shotgun.

- 1.F (Full / )
- 3.M (Modified /// )
- 5.Cyl-Skeet (Cylinder-Skeet ///// )

A choke wrench is supplied in the box with the chokes. . Before you attempt to install a choke always perform a safety check to make sure that the shotgun is unloaded and pointed in a safe direction. To install to choke you can insert it into the end of the barrel and hand screw . It can then be tightened with the choke wrench to secure its place.

### **WARNING !**

Never peer directly into the shotgun’s muzzle or change chokes when the gun is loaded regardless of the position of the safety. Never fire the shotgun if the screw-in choke is not fully and tightly bottomed to the barrel threads of the barrel or choke insert is damaged . In this situation the barrel will be damaged and the choke insert will be propelled out of the muzzle with high velocity which can result in death, serious injury, or property damage. Never fire the shotgun without the screw-in choke in place as it will cause and unpredictable shot pattern and damage the choke threads in the barrel thus making correct installation of the screw-in choke impossible without expensive-rebarreling.

	SKEET	IC	M	IM	F
CHOKE TUBE					
BBLS	CL	HHHH	HHH	HH	H

Your shotgun is packed with either 3-choke system. Most common and preferred 3-choke system is F, M, IC chokes. However different combination 3-choke systems are possible depending on the requirements of different countries. All screw-in (inner) chokes have one, two, three, four or five notches, which indicate the type of the screw-in choke, i.e. F choke has one, IM has two, M has three, IC has four and Cyl-Skeet has five notches. Please also check the markings on chokes.

**NOTE:** M, IC and Cyl-Skeet choke tubes are good for steel shot. F & IM choke tubes are for lead shot only. Extra full choke tubes are for lead shot only.

Fixed Cylinder Bore Choke means the choke constriction is pre-machined into the barrel at the factory. No choke adjustments can be made and no interchangeable chokes can be put. 18"/46 cm and 20"/51 cm barrel pump action models are produced with this choke system as standard.

### **WARNING !**

1. Make sure the shotgun is unloaded and the safety "ON" before you assemble/disassemble the chokes.
2. Under safety conditions (cartridge chamber empty, receiver empty, magazine tube empty, safety engaged), check whether the choke worked loose during use. In such a case, the choke must be tightened to the end by means of the choke wrench.

### **Assembly & disassembly of the inner chokes:**

Take one of the inner chokes of your choice. Place it inside barrel and by means of choke wrench; screw (clockwise) it to the end until it is completely tightened. To disassemble, unscrew (counter-clockwise) by means of choke wrench and remove it.



**DO NOT FIRE THIS SHOTGUN WITHOUT THE CORRECT CHOKE TUBE INSTALLED. PERMANENT DAMAGE MAY RESULT TO THE THREADS**

## CARE AND CLEANING

**WARNING:** Place the safety in the “safe” position and lock the bolt the rear. Be certain your shotgun’s magazine, feed mechanism and chamber are unloaded. Always wear protective safety glasses during all assembly, disassembly and cleaning procedures.

Disassemble, clean and lubricate the shotgun when grease, dirt or powder fouling accumulates in the barrel and action. To avoid rust and corrosion, clean and lubricate after each use.

Materials and equipment necessary for cleaning and lubrication; Cleaning rod, Cotton bore patches, Brass bore brush, Powder solvent, Small soft brush, Good quality shotgun oil.

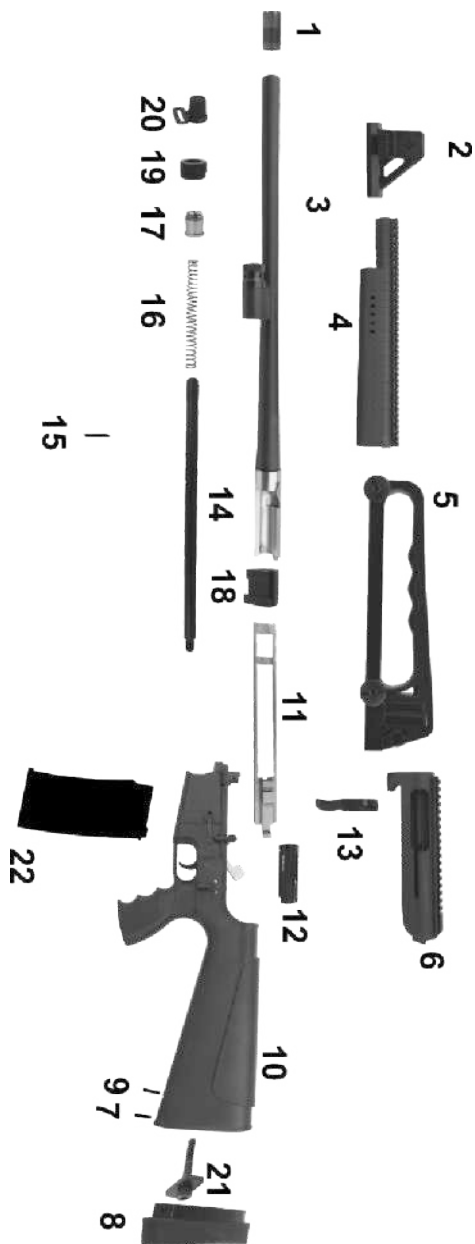
- After use, to remove any powder and lead residue in the bore, scrub the barrel and chamber using the bore brush with powder solvent. Then swab the bore and the chamber with shotgun oiled cotton patches to protect from rust and corrosion.
- After a high number of shots (about 500 shots), disassemble the bolt assembly and clean it with a soft brush and shotgun oil. Then dry it carefully with a soft cloth and oil the parts lightly.
- Clean the outside of the magazine tube with a shotgun oiled soft cloth and then dry it with a soft cloth and oil the parts lightly.
- Any powder on the chamber, barrel, etc. can be cleaned with a brush and powder solvent.
- All external surfaces should be wiped down with light coat of rust preventative.
- Avoid using too much solvent for bore cleaning, since prolonged contact may damage the finish of the shotgun. Make sure to wipe away all the excess solvent and lubricant.

## STORAGE

Clean thoroughly and oil your gun before storage. Store the gun in a case to prevent scratches and dents. Store your shotgun in a dry place to prevent corrosion. Store the gun away from children and in a place where it cannot be obtained by those unauthorized to use it. Always store gun unloaded and separately from any ammunition.



## DISASSEMBLED DIAGRAM



## PART LIST

1.	Choke (3 included)
2.	Front sight
3.	Barrel
4.	Handguard
5.	Carrying handle/rear sight
6.	Upper receiver
7.	Buttpad screws
8.	Buttpad
9.	Rear sling ring
10.	Lower receiver & stock
11.	Bolt carrier
12.	Bolt
13.	Bolt Handle
14.	Operational rod
15.	Front sling ring
16.	Operational spring
17.	Gas piston
18.	Bolt carrier fixing tube
19.	Barrel fixing nut
20.	Handguard secure cap
21.	Upper receiver retention bolt
22.	Magazine (2 included)

## DISASSEMBLY INSTRUCTIONS



1. Unscrew the front handguard secure cap and remove it.



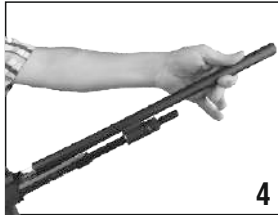
2. Pull the handguard forward to remove it from the body.



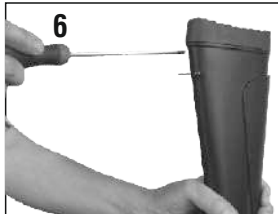
3. Remove the barrel fixing nut but you don't need to remove gas regulator nut and spring



4. Pull the bolt to the rear slightly and remove the barrel as you are letting the bolt slide forward. Slowly release the bolt to clear the recoil spring/bolt carrier as the barrel comes out.



5. Turn the ratchet downward to release the carrier.



6. Remove the buttpad using a screwdriver to access the upper receiver retention bolt in the void of the buttstock.



7. Insert Allen socket into upper receiver retention bolt and loosen the bolt 4 full turns. Remove the ratchet and lightly tap the extension and socket to push the retention bolt forward. After the upper receiver starts to separate, loosen the bolt 2 to 3 more turns. Gently tap the extension to further separate the upper receiver from the buttstock. You will note an expanding gap as you do this. When the widening of the gap is around  $\frac{1}{8}$  inch, you can remove the upper receiver retention bolt and washer. Slightly compress and hold the recoil

spring on the operational rod with one hand; this keeps the bolt from pushing forward and damaging the feed ramp. Use your other hand to help separate the upper receiver from the buttstock/lower receiver. As the upper receiver separates, lift the receiver up and off. This allows the bolt to clear the feed ramp on the lower receiver.

## NOTES

.....

.....

.....

.....

.....

.....

.....

.....

.....

.....

.....

.....

.....

.....

.....

## NOTES

.....

.....

.....

.....

.....

.....

.....

.....

.....

.....

.....

.....

.....

.....

.....



Eternal Arms İnşaat Silah San. İç ve Dış Tic. Ltd. Şti.

T: +90 542 530 53 01

Hacıakif Mahallesi Özdilek Caddesi No.86/B Beyşehir - Konya / TURKEY

[www.eternalarms.com.tr](http://www.eternalarms.com.tr)

[export@eternalarms.com.tr](mailto:export@eternalarms.com.tr)