



DISCOVER
PUMP ACTION INSTRUCTION MANUAL

Read the instructions and warnings in this manual carefully before using these firearms

SAFETY REVIEW

- Do NOT alter or modify your firearm.
- Remember to have it serviced regularly.
- Always handle your firearm as if it were loaded.
- Never point your firearm at anything you don't intend to shoot.
- Always make sure your firearm is not loaded and the bolt catch is latched open and to the rear before laying it down or handing it to someone.
- Never leave a loaded firearm unattended.
- Always be sure bore, muzzle, chamber and action are clear of obstruction or water.
- Always check that ammunition is clean and undamaged.
- Never drink alcoholic beverages or take drugs before or during shooting.
- Always wear eye and ear protection when shooting.
- Always keep safety on "SAFE" when the firearm is loaded and a round is chambered until ready to shoot.
- Never indulge in "horseplay" when holding your firearm. Use screw drivers that are designed for firearms and fit screw slots properly to avoid damaging screw heads and slots.
- Never transport a loaded gun.
- Always store the firearm and ammunition separately, locked and away from children's reach.
- Always keep your hands away from the muzzle of the gun to avoid serious injury.

For many years, has been associated with the gun industry. Modern technology, true value and affordable quality are all features that are synonymous with the name. We at Eternal e privilege of delivering a product to you that will provide you with many years of pleasurable use. Happy shotgunning.

INTRODUCTION & OPERATION

Presents 12 ga pump action shotguns. Every single detail of the shotguns are engineered to provide you the most reliable operation and handling.

FEATURES

Model: DISCOVER

Stock: Walnut

Barrel Length: 47 cm - 18.5"

Magazine Capacity: 4

Choke: Muzzle brake

Average Weight: 6.85 lbs

Receiver Material: Steel

Barrel Material: 4140 Steel

Operating System: Pump Action

⚠ WARNING Never leave a loaded firearm unattended.

⚠ WARNING Only an authorized gunsmith should inspect and repair your firearm.

STORAGE

Always keep and store your firearm in an unloaded condition with the safety in the SAFE position. Keep the firearm and ammunition away from children and unauthorized persons. Firearms should be stored separately from ammunition. Store your firearm in a dry place to prevent corrosion. Wipe all exposed metal surfaces with an oiled cloth before storing. Store your firearm in a case to prevent scratches and dents.

AMMUNITION RECOMMENDATIONS AND GUIDELINES

Your shotgun is designed to give you a lifetime of use with standard loads from 1 oz to 1.75oz and 1250 feet per second to 1600 feet per second maximum. Shooting ammunition that is above the maximum weight or above the maximum 1600 velocity will cause damage, void your warranty, and could cause personal injury. It is your responsibility to understand what ammunition is and is not acceptable to use in your shotgun.

SERVICE

After extended periods of heavy use, your firearm should be taken to a qualified gunsmith to have the action disassembled for professional cleaning and lubrication.

Do not return defective or damaged product to the dealer. If your firearm needs repair, call and ask for the Service Department or visit

www.eternalarms.com.tr

DO NOT ATTEMPT TO DISASSEMBLE IT! Your firearm requires special tools and fixtures to repair it. Any disassembly or modification not performed by will void the warranty.

PREFACE:

The following information is intended to provide you with knowledge that will allow for the safe operation, proper care and maintenance of your new shotgun.

Encourages all individuals to use extreme caution when handling any firearm. Treat the gun as if it is loaded at all times. Always practice safe shooting habits and remember that safe operation of any firearm depends entirely on your actions.

FEATURES:

3" Chamber

Chokes (Full, Modified, Improved)

Bottom Ejection and Loading

Machined Steel Receiver

Steel Trigger Housing

Lengthened Forcing Cones to Reduce Recoil and Shot Deformation

5 Shot Capacity (4+1) with Follower and Duck Plug

CARE AND MAINTENANCE:

ATTENTION!

Your new has been treated at the factory with protective oils. General cleaning should be done before and after every use to maintain its functionality and appearance. Please follow the instructions to ensure the safe operation of your new firearm.

Readers should be aware that this manual is a guide to care and maintenance of a With the use of illustrations you will be guided through the disassembly as far as needed to clean and care for the firearm.

Tools Needed for Cleaning; Small flathead screw driver

Soft cloth and cleaning solution

Quality firearm cleaning kit with cleaning patches and rod.

Note: When cleaning, you firearm be sure not to lose or damage any parts.

CARE AND MAINTENANCE:

All new will accept 2 3/4 or 3 shells.

The Cleaning Instructions:

1- Keeping the barrel pointed in a safe direction with the safety on, press back on the action release and pull the forend back to open the action (Figure 1).

Check to make sure the gun is unloaded by looking and feeling in the chamber and magazine tube (Figure 2 and 3).

The only disassembly required for general cleaning is to remove the barrel and the choke tube.



Figure 1



Figure 2



Figure 3

CARE AND MAINTENANCE:

2- With the forearm held upright, turn the magazine nut clockwise until its snug against the magazine tube yoke (Figure 4).

3- Next turn the barrel a 1/4 turn (Figure 5) and pull it straight out away from the receiver (Figure 6). [Note: This will be all you need to disassemble the forearm for general cleaning].

4- Assemble your cleaning rod and place the correct attachment on the tip, place a cleaning patch on the end of the rod tip that is saturated in cleaning solvent.

5- Start the rod into the forearm by feeding it slowly into the breech end about 3-4 inches. Now grasp the handle and push the rod in, through the bore and out the muzzle using only necessary force. Do not force a rod that is overly tight in the bore.

6- Repeat step five with another saturated patch, working the rod the entire length of the bore in both directions. Do not switch direction in the middle of the bore.



Figure 4



Figure 5



Figure 6

LOADING:

REMEMBER: Whenever you handle your, Always treat it as if it were loaded. Always keep the barrel pointed in a safe direction.

To Load:

- 1- Place safety on "safe" position . Make sure the red indicator is not visible by pushing left to right. This indicates that the safety is on (Figure 7).
- 2- Invert the firearm and place the shell into the bottom opening (Figure 8) and push forward past the shell stop (Figure 9). Repeat until magazine takes desired quantity up to four shells.



Figure 7



Figure 8



Figure 9

UNLOADING:

REMEMBER: Whenever you handle your always treat it as if it is loaded. Always keep the barrel pointed in a safe direction.

To Unload:

- 1- To unload, invert firearm over, press down on the spring shell stop (Figure 10) and release shells one at a time until you see the red follower.
- 2- To unload chamber (Figure 11) push the action release and pull forend fully to the rear, ejecting the shell into your hand.
- 3- Leave the action open and put the safety on to store in a safe place. Do not store your firearm in close proximity to ammunition.



Figure 10



Figure 11

DISASSEMBLY:

1- Keeping the frearm pointed in a safe direction with the safety on, pull back the action release and pull the forend back to open the action. Check to make sure the gun is unloaded by looking and feeling in the chamber.

2- With the frearm held upright, turn the

magazine nut counter clockwise until it is snug against the magazine lug (Figure 12). Then turn the barrel a 1/4 clockwise turn (Figure 13) and pull it straight out away from the receiver (Figure 14).

3- Grasp the magazine nut, turn it clockwise making sure you keep light pressure on the cap while unscrewing because it is spring loaded, until you completely remove it.

4- Pull the spring gently out of the magazine tube being careful not to overstretch or bend the spring.



Figure 12



Figure 13



Figure 14

Continued:

5- Turn the frearm upside down and using your finger, push the red follower loose, place your hand over magazine tube to catch the follower; when inverted, the follower will slide into your hand (Figure 15).

6- Using a small flathead screw driver, remove the yoke screw located in the yoke at the end of the magazine tube (Figure 16).

7- Gently spread the yoke apart and slide it off of the magazine tube. Slide the forend forward until the action locks.

8- Invert the frearm and look into the load area and locate the slide pin the slide. Using the same Flathead screw driver, push the slide pin to the left (Figure 17). Then pull the forend or the magazine tube.



Figure 15



Figure 16



Figure 17

SAFETY

WARNING! Any firearm has the ability to cause fatal injuries to yourself or others around you.

Practice Safe Firearm Habits at all times. **SAFETY IS YOUR RESPONSIBILITY**

Safety rules are very important for the protection of you and other. Firearms are dangerous if handled inappropriately causing serious damage to property, serious injury or death.

- 1- Always treat a firearm as it is loaded
- 2- Never point a firearm at anyone or in the direction of others; keep the muzzle pointed in a safe direction at all times.
- 3- Never receive or hand a firearm to anyone without the action being opened.
- 4- When loading and unloading a firearm, be sure the safety is on!, and keep your fingers away from the trigger.
- 5- Become familiar with the firearm you are using prior to loading it with ammunition
- 6- Make sure the barrel is free from obstruction prior to loading the firearm.

7- Always be sure of your target and what's beyond it before shooting.

8- Keep your finger on the trigger until your sights are on the target.

9- Wear proper ear and eye protection when shooting your firearm.

10- Always store ammunition in a separate location from firearms.

11- Keep firearms out of reach of children and untrained adults.

12- Never mix the use of alcoholic beverages with the handling or operation of any firearm.

13- When cleaning any firearm, do it in a well ventilated area; free from open flames and wash hands thoroughly after exposure to cleaning solvents and oils.

14- Never handle or operate any firearm while taking medication unless your doctor approves it.

15- Prior to any maintenance of a firearm make sure that the chamber, carrier and magazine are completely empty of ammunition.

*Make sure to follow user instructions on cleaners and solvents of your choosing. Some may require gloves therefore be sure to follow their guidelines.

CARE AND MAINTENANCE:

Cleaning Instructions Continued:

7- Replace with a dry patch on the cleaning rod and swab until the barrel is dry. Repeat steps 6 and 7 until the dry patch comes out clean.

8- Examine the bore, if no dark spots are seen, saturate a patch with lubricating oil and push it slowly through the bore. This lubrication will prevent the barrel from rusting. If dark spots are seen repeat steps 5, 6 and 7.

9- A bristle brush on the end of a cleaning rod is helpful to clean when removing hard deposits. Repeat this until stubborn deposits are removed.

Then repeat steps 5, 6, 7 and 8.

General Cleaning Tips:

Wipe down wood stocks and forends with linseed oil, this will help protect the wood on your gun. This does not apply to camo coated guns, forends or synthetic stocks.

Putting a light coat of oil to all external metal parts will prevent and protect against rust.

Use a soft cloth and cleaning solvent to wipe down the inside of the chamber.

Use a soft bristle brush to scrub threads of the barrel and internal threads of the receiver.

*Cleaning and maintenance should be done with caution. Any further internal problems should be done by a qualified gunsmith. Call our Service Department, or contact a local gunsmith in your area.

LOADING:

REMEMBER: Whenever you handle your firearm always treat it as if it were loaded. Always keep the barrel pointed in a safe direction.

Loading Continued:

3- Press action release, pull forend fully to the rear to release the shell from magazine then push forward until it locks in the battery position.

Note: Please observe your state's rules and regulations regarding shell capacity.

As delivered (less duck plug) your is 4 plus 1. Simply stated, 4 in magazine, 1 in chamber.

TEN COMMANDMENTS OF SAFETY:

1- Treat every gun with the respect due a loaded gun. This the cardinal rule of gun safety.

2- Carry only empty guns, take down or with the action open, into a vehicle, home or camp.

3- Always be sure the barrel and action are clear of obstructions and that you have only ammunition of the proper size for the firearm you are carrying.

4- Always carry your gun so that you can control the direction of the muzzle, even if you stumble. Keep the safety on until you are ready to shoot.

5- Be sure of your target before you pull the trigger.

6- Never point a gun at anything you do not want to shoot (regardless loaded or empty). **unattended**

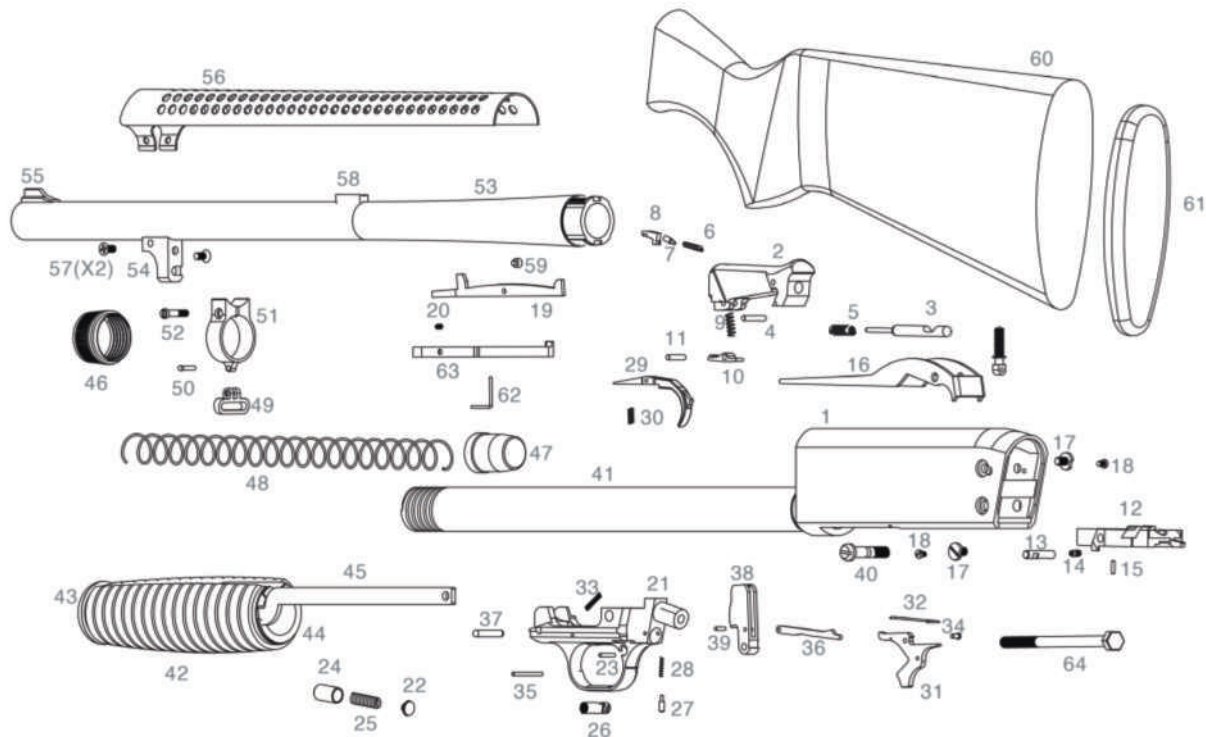
7- Never leave your gun unattended unless you unload it. Also, be sure to store guns and ammunition separately beyond reach of children or careless adults.

8- Never climb a tree or fence or jump a ditch with a loaded gun, and never pull a gun to you by the muzzle.

9- Never shoot at a soft, hard surface or the surface of water.

10- Avoid alcoholic drinks before or during shooting.

DISASSEMBLED DIAGRAM



PARTS LIST

1	RECEIVER	23	TRIGGER PIN	45	SLIDE TUBE
2	LOCKING BLOCK	24	MAIN SPRING CAP	46	MAGAZINE NUT
3	FIRING PIN	25	MAIN SPRING	47	MAGAZINE CAP / FOLLOWER
4	LOCKING BLOCK PIN	26	SAFETY	48	MAGAZINE SPRING
5	FIRING PIN SPRING	27	SAFETY CATCH PIN	49	SLING SLIDE
6	TOP EXTRACTOR SPRING	28	SAFETY SPRING	50	SLING SLIDE PIN
7	TOP EXTRACTOR CAP	29	TRIGGER	51	YOKE SPLIT
8	TOP EXTRACTOR	30	TRIGGER SPRING	52	YOKE SPLIT PIN
9	BOTTOM EXTRACTOR SPRING	31	SLIDE STOP	53	BARREL
10	BOTTOM EXTRACTOR	32	SLIDE STOP SPRING	54	BARREL FIX
11	BOTTOM EXTRACTOR PIN	33	SLIDE STOP BOTTOM SPRING	55	FRONT SIGHT
12	SLIDE	34	SLIDE STOP PIN	56	HEAT SHIELD
13	PIN	35	TRIGGER PIN	57	HEAT SHIELD SCREW
14	SPRING SLIDE PIN	36	HAMMER BAR	58	HEAT SHIELD BLOCKER
15	SLIDE PIN	37	HAMMER PIN	59	CARRIER SCREW
16	CARRIER	38	HAMMER	60	BUTT STOCK
17	CARRIER PIN	39	HAMMER BAR PIN	61	STOCK PAD
18	CARRIER LOCKING SCREW	40	TRIGGER GROUP PIN	62	LEFT SHELL STOP PIN
19	POSITIVE SHELL STOP	41	MAGAZINE TUBE	63	LEFT SHELL STOP
20	POSITIVE SHELL STOP SPRING	42	HANDGUARD	64	STOCK SCREW
21	TRIGGER GUARD	43	HANDGUARD FRONT NUT		
22	MAIN SPRING CAP	44	HANDGUARD REAR NUT		



Eternal Arms İnşaat Silah San. İç ve Dış Tic. Ltd. Şti.

☎ +90 542 530 53 01

📍 Hacıakif Mahallesi Özdilek Caddesi No.86/B Beyşehir - Konya / TURKEY

🌐 www.eternalarms.com.tr ✉ export@eternalarms.com.tr

📘 Eternal Arms 📱 @eternal_arms