



EP-12

PUMP ACTION INSTRUCTION MANUAL

Read the instructions and warnings in this manual carefully before using these firearms



SAFETY INSTRUCTIONS

Always follow the safety instructions for your safety and the safety of others

Always handle your firearm as if it were loaded and do not forget firearms are different no matter how much you are experienced.

- Please understand that the first step of safety is yourself. Your shotgun is a non living object, can not think of safety. It is under your control and using carelessly can cause accidents!

- Never point your firearm at anything you do not intend to shoot and never take anyone's word that the gun is unloaded.

-
Never use your shotgun when you are drunk, had drugs, when riding, when driving and when you feel yourself unwell.

Never shoot at hard surface such as rock, ora liquidsurface such as water. While shooting use protection material for you eyes and ears.

Always keep your shotgun and cartridges away from the children that they can not reach. If possible in a locked safe place.

- Never leave a loaded firearm unattended.

-
Always use only clean, dry, original high quality commercially manufactured ammunition, which is appropriate to the gauge of your firearm.

-
Do not shoot your shotgun without choke tubes and be sure the choke tubes are propely fitted in the muzzle. (On multi choke shotguns only)

-
Never keep your hand in front of muzzle when shotgun is loaded.

Be carefull to follow the instructions correctly and always make sure your firearm is not loaded before/when assembling, dismantling and/or maintaining and cleaning your shotgun to avoid injuries.

Before shooting be sure that inside of the barrel is exactly clean.

LOADING AND DISCHARGING



1- The safety is located behind on the trigger guard.
Get the safety ON. Push the safety button from right side of your gun and allowing it to come out to the left as in the second picture.



2- Load the shotshells from the loading chamber at the bottom of your shotgun, as in the picture and push it inward until heard a locking sound.



3- Pull the latch on the trigger.
4- Pull the forend to the rear



5- Push the forend forward and close the action so that the first shell enters the chamber. Get the safety OFF and your gun is now ready to fire.

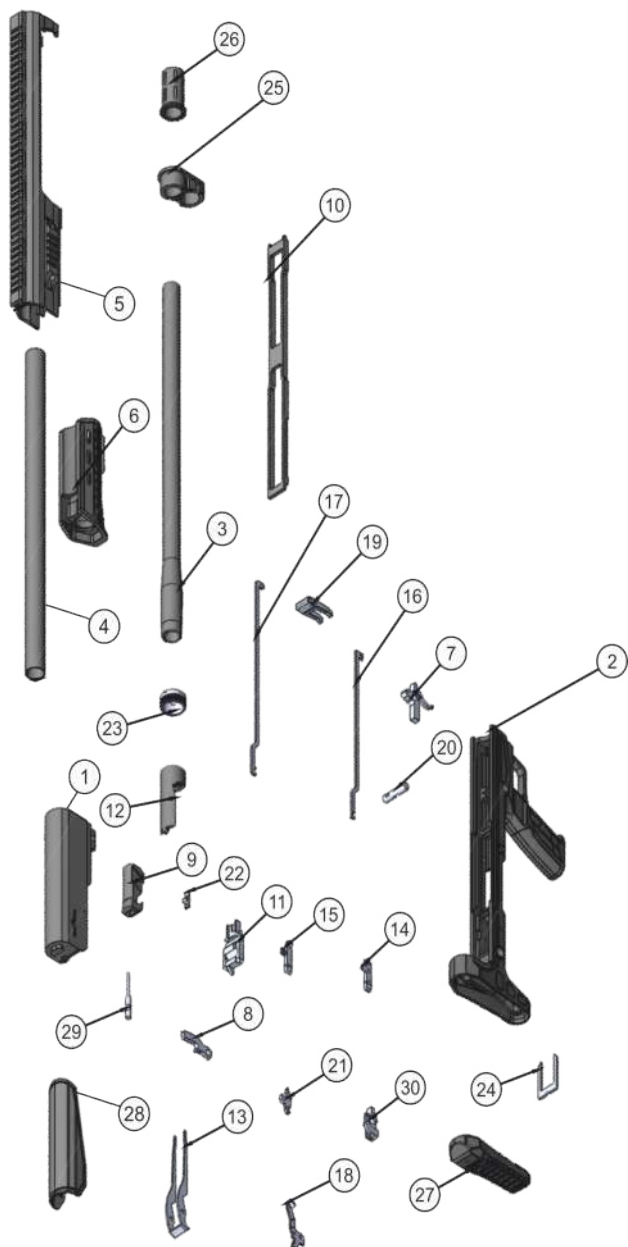


6- To unload the magazine, keep the latch on the front of the trigger guard pulled.

7- Push the fore-end back and forth for each shell and the carrier simultaneously. You will see that the shells will be ejected from the magazine tube. When all the shells are ejected, check the chamber.



8- With the fore-end in the back position, clean the inside of the barrel with suitable cleaning kits.



PART LIST

- | | |
|---------------------------|------------------------------|
| 1- Receiver | 16- Stopper Retaining Pin |
| 2- Lower Body | 17- Trigger Retaining Pin |
| 3- Barrel | 18- Bolt Stopper |
| 4- Magazine Tube | 19- Stopper Button |
| 5- Upper Reciever | 20- Safety |
| 6- Forend | 21- Sear |
| 7- Trigger | 22- Extractor |
| 8 Hammer | 23- Barrel Retaining Nut |
| 9- Bolt | 24- Bolt Cap |
| 10- Action Bar | 25- Upper Receiver Front Cap |
| 11- Pusher | 26- Barrel Clading |
| 12- Chamber | 27- Recoil Pad |
| 13- Carrier Lever | 28- Cheek Piece |
| 14- Shell stopper - Right | 29- Firing Pin |
| 15- Shell stopper - Left | 30- Rear Trigger |

NOTES

[illegible]

PURCHASER'S RECORD

Model Number _____

Purchase Date _____

Gauge or Caliber _____

Serial Number _____

Purchase Price _____

Store Name _____



Eternal Arms İnşaat Silah San. İç ve Dış Tic. Ltd. Şti.

☎ +90 542 530 53 01

📍 Hacıakif Mahallesi Özdilek Caddesi No.86/B Beyşehir - Konya / TURKEY

🌐 www.eternalarms.com.tr ✉ export@eternalarms.com.tr

📱 Eternal Arms 📺 [eternal_arms](https://www.instagram.com/eternal_arms)