



36 GA (.410) CAL. SEMI-AUTO SHOTGUN

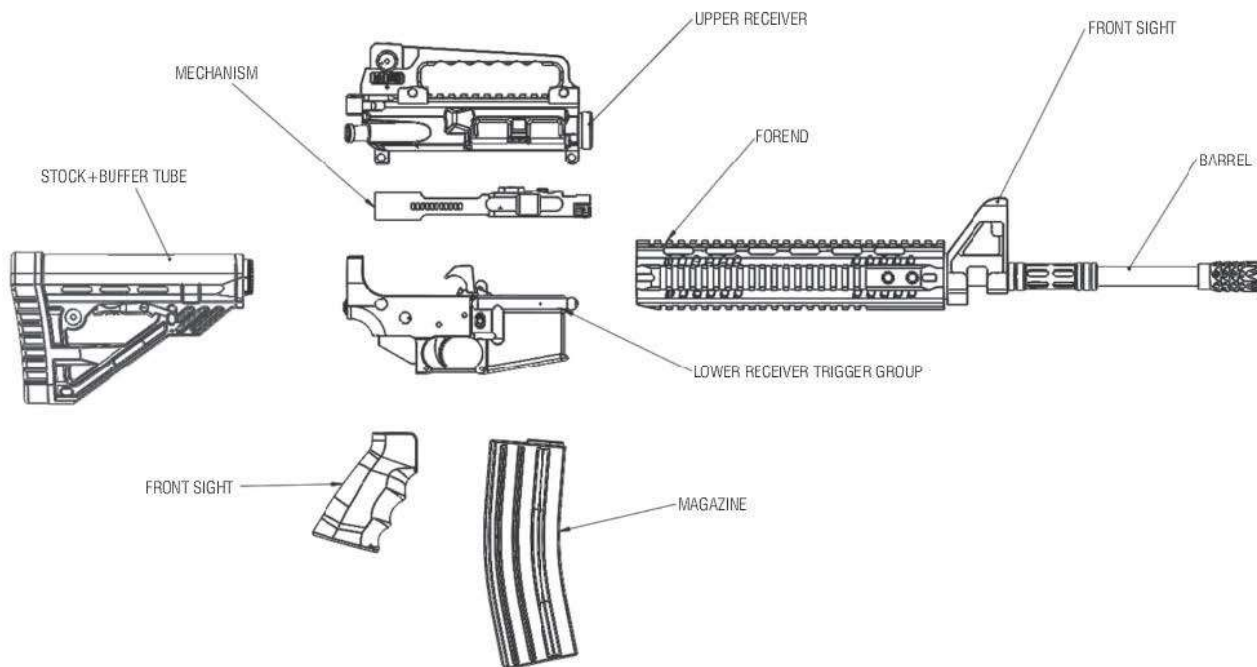
USING AND DISMANTLE OF SHOTGUN PLEASE READ THE MANUAL BEFORE USING THE SHOTGUN

SHOTGUN WORKING PRINCIPLE

With the first motion given by the gas-kinetic semi-automatic magazine shotgun operating handle the mechanism is moved backwards with the rotary head.

With this movement of the mechanism, it enables storage of movement energy and the establishment of a trigger group in the recoil spring in the buffer tube.

By pressing the mechanism stopper latch, the mechanism is released forward with the rotary head. With this movement, the mechanism drives the revolving head together with the first cartridge to the chamber. By touching the trigger, the ignition system is actuated and the cartridge fires. Explosion caused by the gunpowder burned by the ignition of the cartridge capsule in the chamber, this action allows the cartridge plug and buckshot or bullet to move at high speed in the barrel. Some of the high-pressure gas generated in the barrel by the intensity of the explosion passes through the gas holes in the barrel, affecting the surface of the piston so that the mechanism moves back with the rotary head. This motion continues until the revolving head lock is released by damping the recoil spring so that the empty shell is thrown out. With the opening of the damped recoil spring, the mechanism moves forward with the revolving head and takes the full flask from the magazine and turns the shotgun ready for the shot again by driving it to the chamber. This process is repeated automatically at every touch of trigger.



2

T03 Takedown Pin

T06 Pivot Pin

T12 Bolt Catch

T14 Trigger Guard

T19 Trigger

T20 Hammer Spring

T21 Disconnect Spring

T22 Disconnecter

T23 Pin Group

T24 Spring Group

T25 Hammer

T26 Trigger Spring

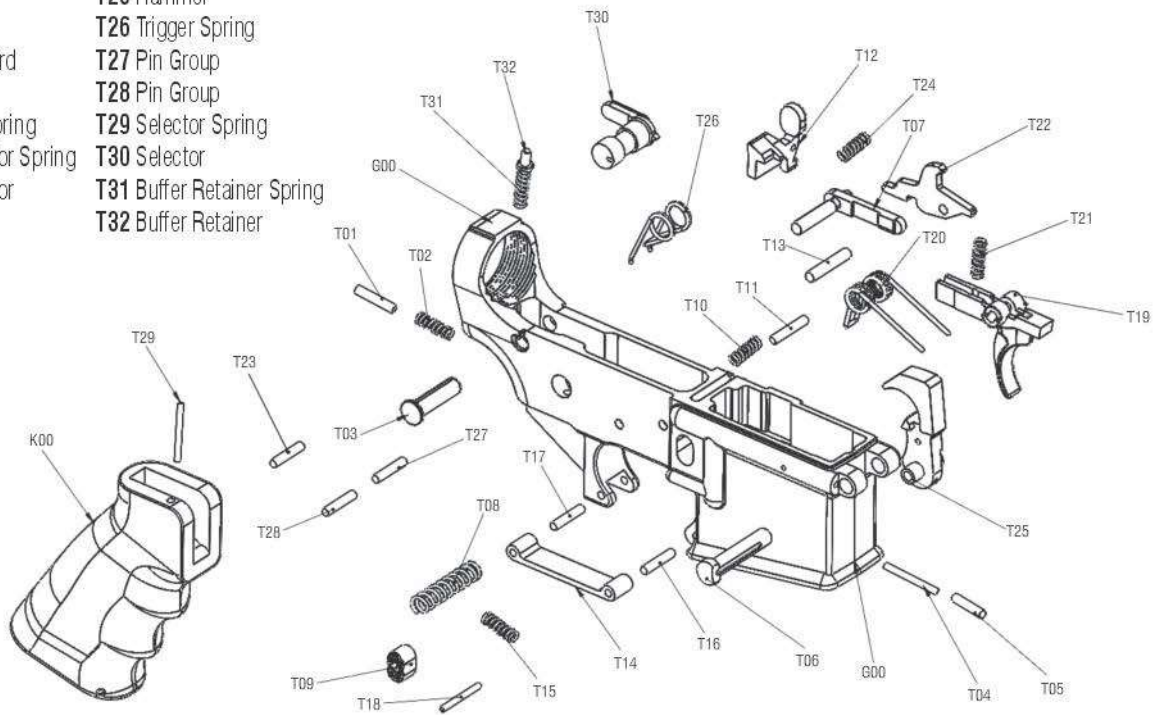
T27 Pin Group

T28 Pin Group

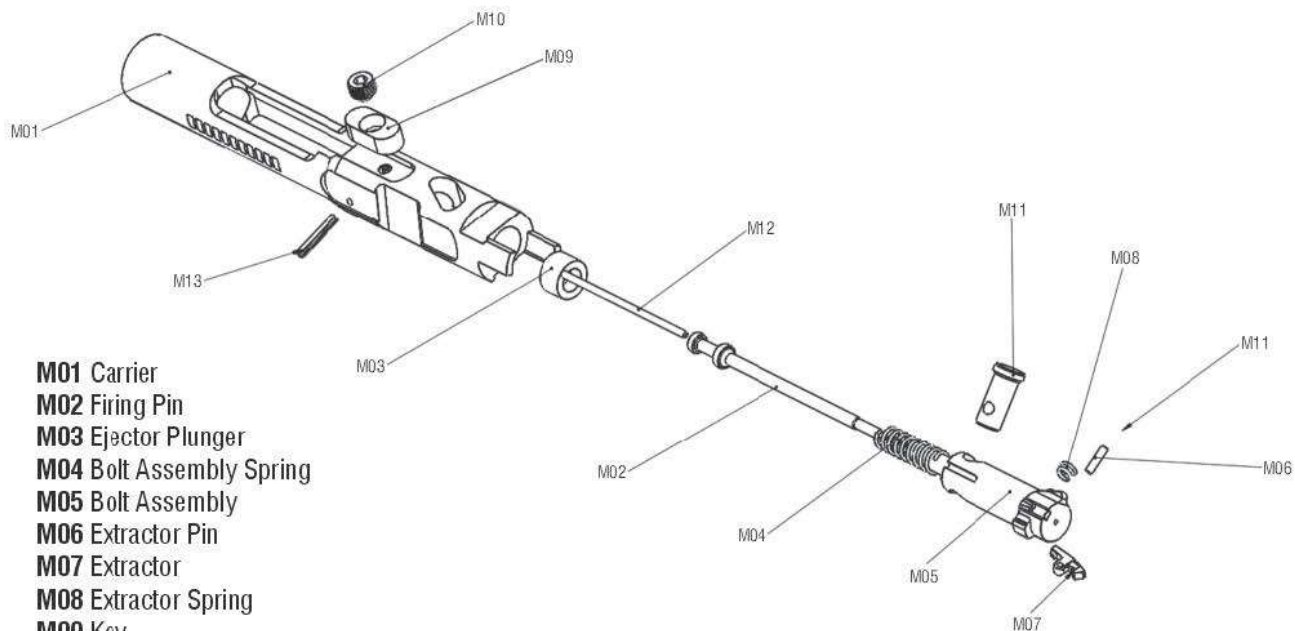
T29 Selector Spring

T30 Selector

T31 Buffer Retainer



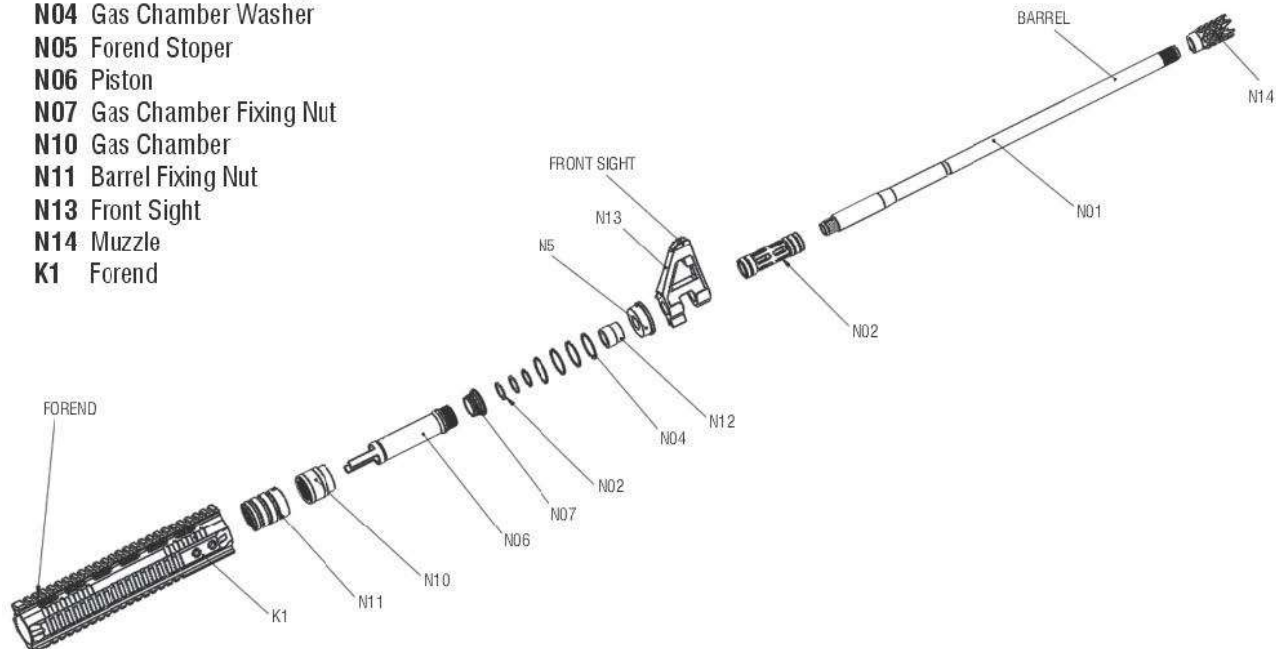
3 BOLT CARRIER GROUP COMPONENTS



- M01** Carrier
- M02** Firing Pin
- M03** Ejector Plunger
- M04** Bolt Assembly Spring
- M05** Bolt Assembly
- M06** Extractor Pin
- M07** Extractor
- M08** Extractor Spring
- M09** Key
- M10** Key Nut
- M11** Bolt Cam Pin
- M12** Ejector Pin
- M13** Firing Retaining Pin

4 UPPER RECEIVER

- N01** Barrel
- N02** Gas Chamber O-Ring
- N04** Gas Chamber Washer
- N05** Forend Stoper
- N06** Piston
- N07** Gas Chamber Fixing Nut
- N10** Gas Chamber
- N11** Barrel Fixing Nut
- N13** Front Sight
- N14** Muzzle
- K1** Forend



5 USE OF AMMUNITION

A- Loading the Ammunition into The Magazine.

Fill the suitable for the shotgun and the hunting into the magazine one by one by pressing them inside the magazine.

B- Feeding the Ammunition in the Magazine to the Barrel.

Place the cartridge magazine in the chamber. Pull the crown all the way out and then release it.

Before doing this, bring the safety latch of the rifle to the locked position.

C- Removing the Bullet from the Barrel (Unloading).

Press the chamber latch nut. Remove the bullet magazine by pulling it from the chamber. Pull the charging handle all the way back to eject the bullet from the barrel.



A- Removing the Fore-end.

To disassemble the Fore-end, unscrew the screw shown in the picture with the help of an allen wrench.

B- Removing the Piston.

After removing the fore-end, unscrew the piston as shown in the picture.

Use cartridges conforming to the standards. Never use self-made cartridges.



C- Separating the Lower.

Push and remove the fixing pins with a thin pin. Disconnect the Trigger Assembly from the receiver.

D- Removing the Mechanism from the receiver.

Separate the receiver into two parts by removing the receiver fixing pins. Remove the mechanism from the inside of the receiver by pulling the crown.



Before using your gun, please review the instruction manual containing the safety information. Improper use of your weapon can result in injury and death. The specified safety rules are an important indicator that the safety of the gun is your own responsibility.

A- Never point your gun in an unsafe direction.

Even if the gun is empty, do not point it at a target that you do not want to hunt. When shooting at a target, take notice of behind of the target. Always point the barrel in a safe direction.



B- Always act carefully as if the gun is loaded.

When you take the gun in your hand, be sure to check whether there is a cartridge in the chamber. While loading and unloading your gun, turn the barrel of the rifle in a safe direction.

C- Keep your gun out of reach of children.

To minimize the risk of accident, store your gun unloaded and far from the ammunition. Keep your gun out of reach of children under 18 years old.

D- Never shoot at water or a hard surface.

Shooting at water, rock, or a hard surface increases the chance of lead ricochet or fragmentation. This may cause the target to be off and hit an unwished mark.

**E- Follow the safety rules while using your gun.**

Do not rely solely on the safety mechanism of the gun to avoid an accident. Follow the rules for carrying and storing the gun safely. These rules are important for the safety of others and your own life.

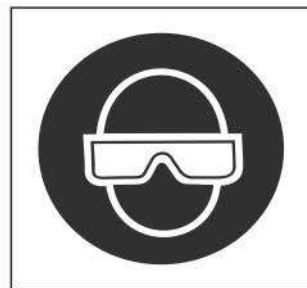
**F- Maintain your gun regularly.**

In accordance with the instructions given in the user's manual, disassemble, clean and lubricate the working parts of your gun after each use.

10 GENERAL SAFETY RULES

G- Use ammunition that are suitable for your gun.

Prefer cartridges manufactured in accordance with Universal standards. If incorrectly made ammunition are used, rifle malfunctions and accidents may occur.



H- Use protective glasses and earplugs while shooting.

Use protective headphones to prevent the loud noise during shooting from causing hearing loss. The user may be harmed by the reflection of gunpowder gas and metal parts. For this reason, it is necessary to use protective glasses during shooting.



I- Do not use weapons if you are drunk.

Do not use a gun if you are drunk, on medication or if you are sick. These can weaken your reflexes and cause you to harm your surroundings.

**J- Do not jump over any obstacle with a Loaded Weapon.
Do not climb trees with a gun.**

Unload your rifle while crossing any obstacle or climbing a place. Do not use your loaded rifle as a support while crossing an obstacle and be careful not to point it at another person.



K- Do not get on a vehicle with a loaded gun.

Unload your gun while getting on the vehicles. Only load your gun at the hunting and shooting range. In this way, you will prevent possible accidents.





FACTORY:

Hacıakif Mah. Ozdilek Cad. 86/B , Beysehir

42700 KONYA

TURKEY

export@eternalarms.com.tr

www.eternalarms.com.tr