



PCP MODELS OWNER'S MANUAL



**READ AND UNDERSTAND ALL OF THE
CAUTIONS AND PROPER HANDLING
PROCEDURES AND INSTRUCTIONS OUTLINED
IN THIS BOOKLET BEFORE USING YOUR NEW
FIREARM.**

www.eternalarms.com.tr

INDEX

04	Warnings
08	General Instructions
09	Disassembly and Instructions
12	Loading the Magazine
13	Parts & Part Numbers
15	Notes

Fill Only With Dry Air!
Never Use Oxygen or Similar Gases!
It can cause critical injury!



Warning!



Caution !

This is not a toy! Only Persons of at least 18 years old with mental and physical capability can use it.



Caution !

In case of surface parallel or sky shoots , you may cause damage to 1000 yards (1KM) around you with the effect of the acceleration or free fall efect.



Caution !

Your airgun's safety should always be on (safety active) and you should safety off only right before the shooting position on the target.
(safety passive)

Warning !



Caution !

Do not force your air tank to open (demount). Do not use any tank that has been tampered due to falling or various reasons.



Caution !

Obey the laws, regulations and rules that are in place in the relevant country, province, district or hunting ground whether private or public.

Warning !



Always remember the following directions !



- Try not go to shooting alone.
- Never use the airgun if you are intoxicated or under the influence of drugs.
- There is high pressure air inside your airgun that is charged with the logic of squeezing .
- Even if there is no pressure sign on the monometer, never disassemble the pressurized tube!
- Bring the safety on before interrupting your airgun in any way and never point the barrel to yourself under any circumstance.
- Only use cotton dry cloth to clean any dirt inside the barrel for various reasons (humidity,dust,etc.)
- You may observe that the accuracy performance of the airgun has reduced if you interrupt your airgun due to dirt barrel outside the instructions given by the manufacturer (hard objects, cleaning with gear type mineral and synthetic oils, etc.) and cause your airgun to go out warranty.
- In your airgun, some of the parts work larger tolerances while others are narrower. For the reason, use only synthetic or mineral base oil with high viscosity not creating filling effect.
- Your airgun has been designed not cause any sliding effect with corrosion.
- Various acids and bleaches inside the anti-corrosive oils might damage the tightness equipment and some of the covered surfaces.
- Calculate the areas where pellet might reach in each of your shoot on or off the target. This is extremely important for safety of yourself and also living and non-living objects around you.
- Do not run or jump with loaded airgun. Your barrel should always point a safe distance while jumping through the ditches.

Warning !

Always Remember The Following Directions !

- In cases of storing your airgun for a long time unused, always keep the trigger safely lowered.
- We don't recommend disassembling and reassembling the airgun unless necessary. Do not disassemble or replace the original parts of your airgun under any circumstance. Please contact the factory, general distributor or the authorized nearest services
- We especially recommend you to act as if your airgun is always loaded. Even if you are in an empty land or forest, make sure that safety is on and your barrel points a safe direction. The owner of the airgun shall be responsible for any damage.

This reminder has been written to keep you away from mistakes that might cause injuries and even death.

Caution ! (DANGER OF EXPLOSION!)

The Air tank poses the explosion risk if it gets heated subject to sunray for extended period of time. (Max + 40° / Min. -05°)
Otherwise, The Airgun should be left to cool down in a cool environment.

Recommended to be transported maximum 80 bars pressure during flights.

GENERAL PARTS



Disassembly and General Instructions



Seperating the Body

The stock of your airgun has been balanced from center of gravity, posinioned not to be subject to pressure or impact and fixed with a single allen screw. You can remove easily with the help of allen.



Trigger Adjustment

You can adjust your trigger's movement distance and hammer falling adjustment from inner trigger and set screws.



Safety

When the safety button on the trigger is pressed from the right side (from the cocking lever), our rifle will be ready for shooting. If pressed from the other side, safety will be activated.



Disassembly and General Instructions



Magazin Placement

The magazine can be attached and removed from the right side. The magazine which has run out of pellet will not permit cocking of the gun.



Power Adjustment

The power adjustment valve is at the back of the body. You can easily increase or decrease the power by hand. You can check with the numbers if the power is increasing or decreasing on the valve.



Bipod & Manometer

There is nut with universal dimensions in each K600 - K900 model for the bipod. (See picture 9).

In our models the manometer which showing the pressure in the tube is located at the bottom of the product. (See picture 10)



Disassembly and General Instructions



Filling the Air Tank

The nozzle adaptor is located in front of the air tube. Assemble the hose with the filling jack that is provided free of charge inside the box as standart. If you hear sound of air during the first filling, move the jack and enable the rings to be air-proof. After making sure that the filling jack is connected, you fill it with the help of scuba tube, pump or compressor.



Safety Valve Replacement

When the tube is filled higher than the allowed (200 bar), a safety valve has been put in order to ensure the safety of life and property. When high pressure is applied, the valve will be damaged and it will not be possible to refill the tube. If this valve is deformed, please contact



Cheek Piece Adjustment

Screws are loosened with allen key. Cheek piece can be adjusted. After proper height adjustment, screws are tightened.

Loading the Magazine



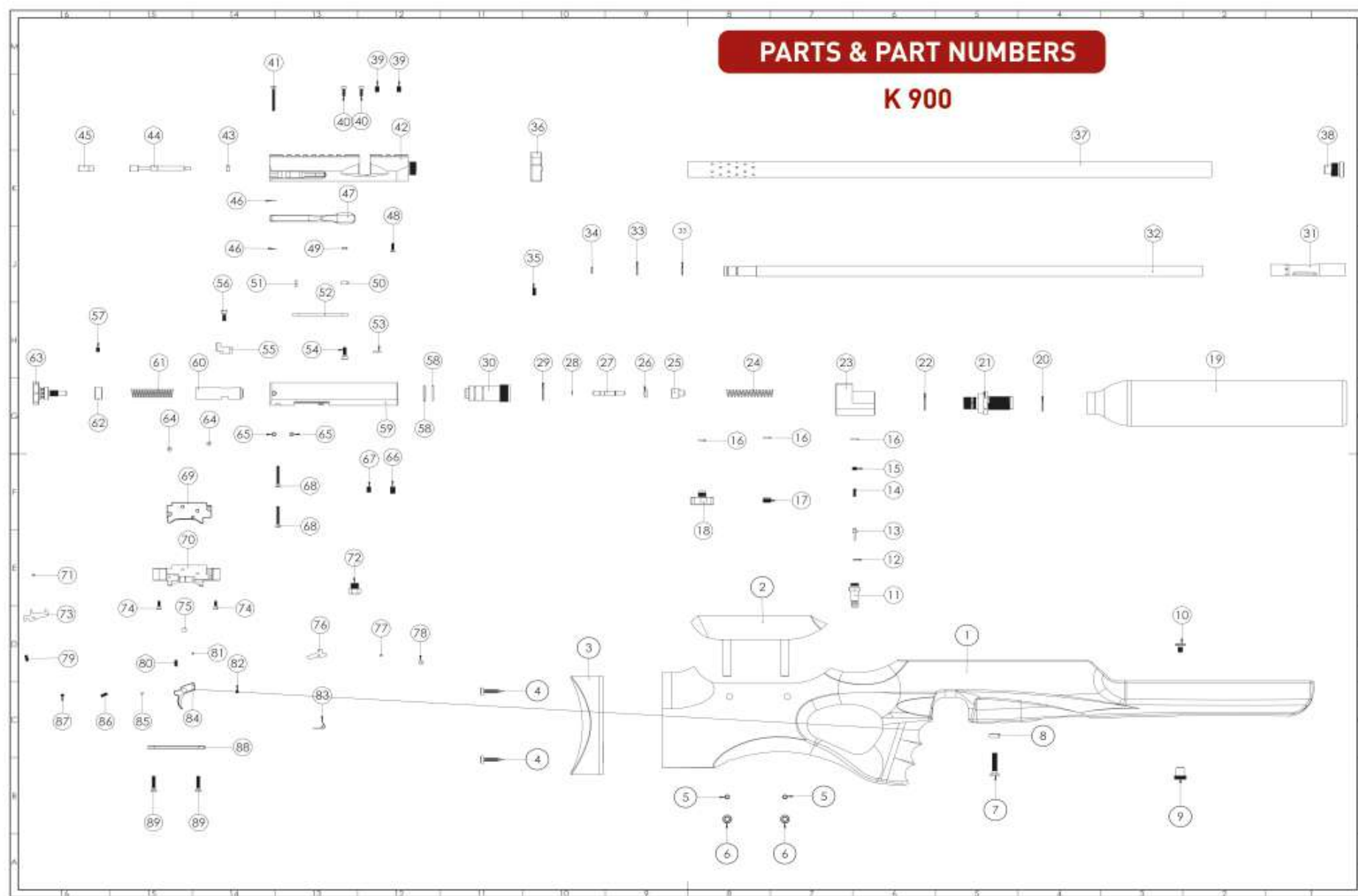
Rotate the front cover in the direction of the arrow (clockwise)

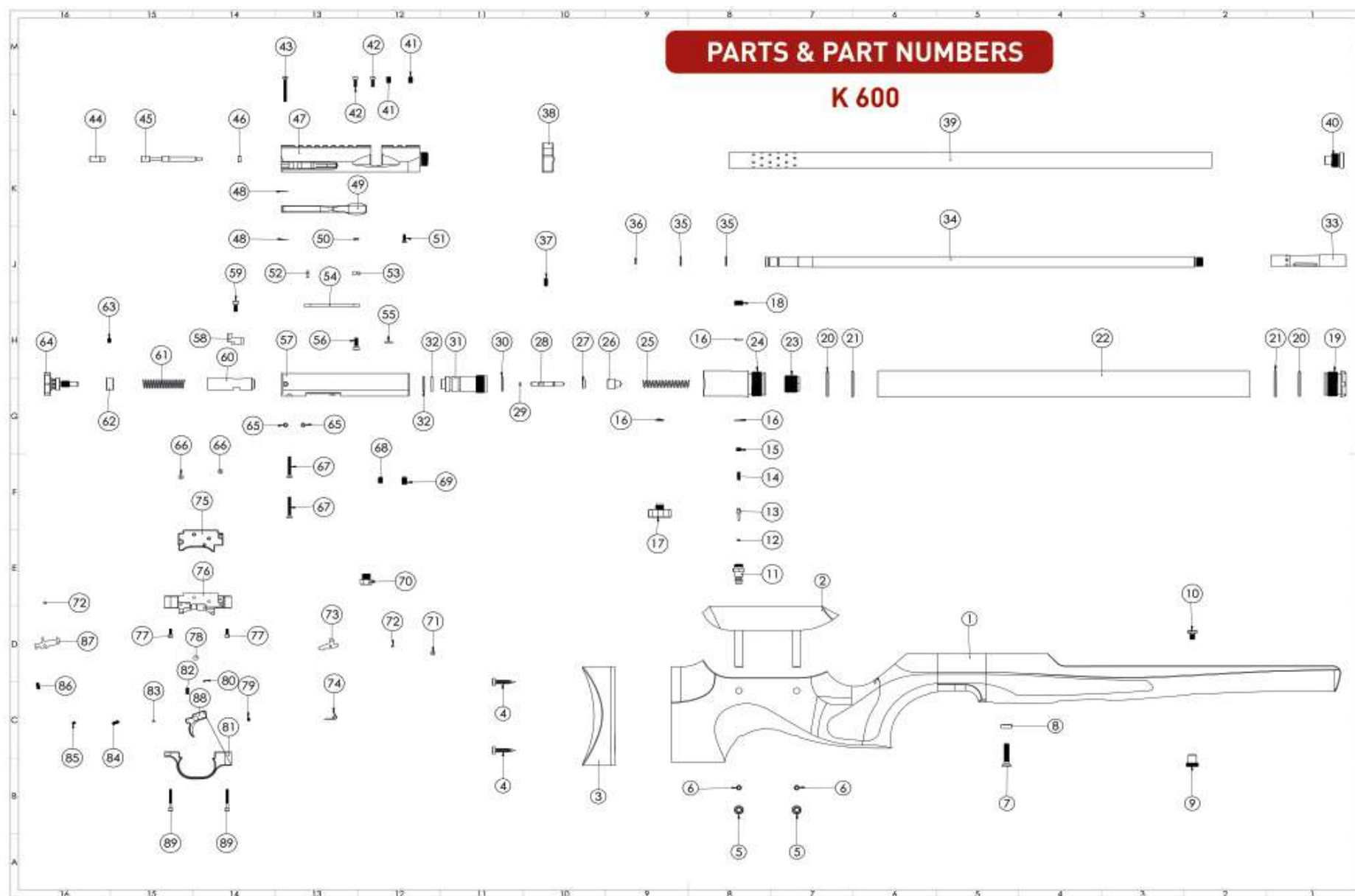


Once the glass cover hits the last point, prevent the pushing force of the spring and switch the pellet to the first bed. (See picture 4)

Once the first pellet prevents the rotation of the inner turret, move the glass cover on the contrary direction and fill the turret.

K 900





NOTLAR / NOTES

READ AND UNDERSTAND ALL OF THE CAUTIONS AND PROPER HANDLING PROCEDURES OUTLINED IN THIS BOOKLET BEFORE USING YOUR NEW SHOTGUN.

DO NOT, UNDER ANY CIRCUMSTANCES, ALTER THE TRIGGER, SAFETY OR OTHER PARTS OF THE FIRING MECHANISM OF THIS OR ANY OTHER SHOTGUN. FAILURE TO OBEY THIS WARNING MAY RESULT IN INJURY OR DEATH TO YOURSELF OR OTHERS.

IF YOUR SHOTGUN SHOULD REQUIRE SERVICE OR REPAIRS, PLEASE CONTACT YOUR DEALER AT FIRST. FOR OTHER TECHNICAL QUESTIONS ABOUT YOUR SHOTGUN, YOU MAY CONTACT US DIRECTLY;



FACTORY:

Hacıakif Mah. Ozdilek Cad. 86/B , Beysehir

42700 KONYA

TURKEY

export@eternalarms.com.tr

www.eternalarms.com.tr