



FD/SG/VP

SEMI-AUTO INSTRUCTION MANUAL

Read the instructions and warnings in this manual carefully before using these firearms

FIREARMS SAFETY



WARNING: This manual contains operating, care and maintenance instructions. To ensure safe operation, any user of this firearm must read and understand this manual before using the firearm. Disregarding instructions in this manual can cause property damage, personal injury or death to you or those around you. This manual should always accompany this firearm, and be transferred with it upon change of ownership.

1. Never point a firearm at something that's not safe to shoot. Always be certain of your target before firing. Never let the muzzle of a firearm point at any part of your body or at another person.
2. Always handle and treat a firearm as if it is loaded. Always check it yourself with your fingers off the trigger and the gun pointed in a safe direction. Never assume that a firearm is unloaded.
3. Always wear shooting glasses and ear protection when shooting. Wear protective shooting glasses to guard against falling shot, clay target chips, powder residue, ruptured cartridge cases and even twigs and branches in the field. Repeated exposure to gunfire can cause hearing damage. Wear ear protection to guard against such damage.
4. Keep the firearm unloaded during transport.
5. Use proper ammunition. Confusing shells or cartridges can cause serious personal injury or death and destroy your firearm. Examine your shells or cartridges closely and use only the precise caliber or gauge for your specific firearm. Only use factory-loaded and new ammunition. Nevertheless, we can assume no liability for incidents which occur through the use of shells of nonstandard dimensions or which develop pressures in excess of commercially available ammunition which has been loaded in accordance with standards established by SAAMI (U.S.A.) or CIP (Europe and elsewhere).

6. Keep all firearms and ammunition out of the reach of children, unauthorized individuals and others unfamiliar with safe handling of firearms.
7. Never shoot at water, rocks or any hard surface. Shots may glance off such surfaces and cause injuries.
8. Unload your firearm when you have stopped shooting and when you have to climb a tree, fence, cross a slippery surface or have to transport it in a vehicle.
9. Do not use alcohol or drugs before or while handling firearms.
10. Learn to clean your firearm thoroughly and make certain no oil, grease or other materials are blocking the barrel. Obstructions of any kind can cause damage to the firearm and could cause serious injury or death to you or those around you.
11. Never touch the trigger on a firearm until you are ready to shoot. Keep your fingers away from the trigger when you're loading or unloading. Don't pull the trigger when the safety is engaged or positioned between safe and discharge.
12. Never leave a loaded firearm unattended. Store your firearms and ammunition separately.



STATE WARNING: According to state law, California requires that firearm manufacturers, distributors and retailers include conspicuous, specific warnings with firearms sold in that state. Firearms must be handled responsibly and securely stored to prevent access by children and other unauthorized users. California has strict laws pertaining to firearms, and you may be fined or imprisoned if you fail to comply with them. Visit the Web site of the California Attorney General at <https://oag.ca.gov/firearms> for information on firearm laws applicable to you and how you can comply. Prevent child access by always keeping guns locked away and unloaded when not in use.

LOADING

1. When loading your shotgun always keep the muzzle pointed in a safe direction.
2. Release the magazine by pressing magazine lever.
3. Load the magazine with shells of the correct gauge, one at a time.
4. Align shot shells as shown in the figure, first press down and then to the rear.
5. Don't try to load excessive number of shot shells in to the magazine.
6. After charging the magazine, attach it to the shotgun as shown in the figure.
7. When magazine is properly attached, magazine lever will return to its neutral position.



FIRING

1. With the muzzle pointed in a safe direction and the firearm held in the proper firing position, move the safety button fully forward to the "OFF" (FIRE) position. Pulling the trigger through its full travel to the rear will fire the firearm. Ensure the muzzle is pointed in a safe direction before placing your finger on the trigger.
2. After firing, the empty cartridge will be automatically ejected through the ejection port. Be sure all observers are clear of the path of ejection, as the empty cartridges are thrown out with considerable force and could cause injury.
3. This firearm automatically feeds the next live cartridge from the magazine into the chamber each time the firearm is fired, until all cartridges in the magazine tube are fired.
4. This firearm is designed so that when all cartridges have been fired, the bolt will automatically lock rearward in the open position. You should never use this feature as a guide for determining if the firearm is empty! Always visually and physically inspect the chamber, elevator, and magazine tube for the presence of ammunition to ensure the firearm is completely unloaded.
5. Should any cartridge fail to fire, keep the muzzle pointed in a safe direction for at least (30) seconds in case the cartridge is a "hangfire" (delayed firing of the cartridge after being struck by the firing pin). Move the safety button fully rearward to the "ON" (SAFE) position. Then pull the charging handle fully rearward to extract and eject the misfired cartridge. Do not attempt to refire a misfired cartridge.
6. After firing or when shooting is no longer imminent, put the safety button in "ON" or "SAFE" position.

UNLOADING

1. Always keep the firearm pointed in a safe direction throughout the unloading process.
2. Move the safety button to the "ON" or "SAFE" position.
3. Pull the charging handle fully rearward, extracting and ejecting the chambered shell.
4. Chamber the staged shotshell by releasing the bolt.
5. Repeat steps 3 thru 5 until all shotshells are removed from the firearm. When all shotshells are removed from the firearm, the bolt will remain open in the locked position.
6. With the bolt locked open, visually check the chamber, ejection port, and magazine to make sure the firearm is completely unloaded and the barrel is free of obstructions.

DISASSEMBLY



Before all these operations please be sure that shotgun is not chambered and magazine is not attached. Do not disassemble the shotgun if magazine is attached or the shotgun is chambered.

Operations are listed in sequence order. Disassembling bolt assembly:
Put safety lever to FIRE position.

1. Press recoil spring retainer to forward and downward direction. While recoil spring retainer is pressed lift the top cover.
2. Release the recoil spring retainer from receiver by pressing it to forward. By this recoil spring, guide rod and guide bushing can be disassembled.
3. Pull the cocking handle to disassemble bolt assembly from shotgun.

4. Bolt Head Assembly can be disassembled from bolt assembly by turning.



A) DISASSEMBLY OF THE GAS PISTON

1. Disassemble bolt assembly as shown in the figure.
2. Rotate gas tube retainer until it is parallel with the top surface of the shotgun
3. Take out gas chamber cover as shown.
4. Press forend swivel sleeve to muzzle direction.
5. Disassemble the forend.
6. Disassemble the gas piston with the help of bolt carrier as shown.



Warning: Gas piston can be disassembled after bolt assembly is disassembled. Pay attention to operation order while disassembling the shotgun.

B) DISASSEMBLY OF THE STOCK

To disassemble the stock remove two stock attachment screws located at back of receiver.



C) DISASSEMBLY OF THE GRIP

1. Remove the cover (In some models).
2. Loosen and remove the screw nut connection inside to disassemble grip from receiver.

Note: Stock and grip can be disassembled individually. To disassemble the gas piston, bolt assembly must be disassembled.

ASSEMBLY

A) ASSEMBLY OF THE GRIP

1. Place grip to its position.
2. By completing the nut and screw connection assemble can be done.

B) ASSEMBLY OF THE STOCK

1. Insert the grip and stock into the appropriate mounting locations on the receiver.
2. Use the hardware included and tighten until it snugs.

C) ASSEMBLY OF THE GAS PISTON

1. Place the gas piston to gas chamber as shown in the figure.
2. Forend is attached by placing its slots on the receiver.
3. Forend swivel sleeve is pushed rear to its position
4. Gas tube cover is assembled as shown in the figure.
5. Tighten the gas tube retainer.



D) ASSEMBLY OF THE BOLT ASSEMBLY

1. Make sure that chamber is empty.
2. Bolt head and bolt assembly should be placed to its housing as shown in the visual -After bolt assembly and bolt head is aligned in respect to barrel, bolt assembly is positioned to its housing on receiver and pressed to downward.
3. After bolt assembly is pressed until frontmost push bolt carrier will get in to the gas piston.
4. Recoil spring guide and recoil spring is placed in their housing.
5. Recoil spring guide is placed to its housing on receiver by pressing forward and then backward.
6. Close the top cover.



MAINTENANCE

WARNING: Before attempting any work on your shotgun, make sure that the chamber and the magazine of your shotgun are unloaded.

Thanks to its extreme simplicity and careful choice of materials, shotguns do not require any special maintenance, aside from the following simple operations:

1. Routine barrel cleaning after shooting.
2. Clean any fouling or debris from receiver and oil bolt rails and outside of the magazine tube.
3. The bolt assembly can also become fouled with powder residue and should be routinely stripped, cleaned and oiled.
4. Clean any fouling or debris from trigger assembly. Keep all parts oiled to keep the shotgun in working condition.

AMMUNITION

USE ONLY SUITABLE AMMUNITION: These semi-automatic shotguns are chambered in 12 & 20 gauge. They have been designed to fire 2¾" (70mm) to 3" (76mm) length with lead or steel shot. Use of Full or Improved Modified choke tubes is not recommended with steel shot.

Note: No adjustments to the shotguns are necessary to fire any of the ammunition listed above.

WARNING: Never use cartridges with a case longer than the chamber, as this would have serious consequences for both the gun and the shooter.

WARNING: Use ONLY factory loaded ammunition. Use of re-loaded ammunition voids the 2-Years Factory Warranty.

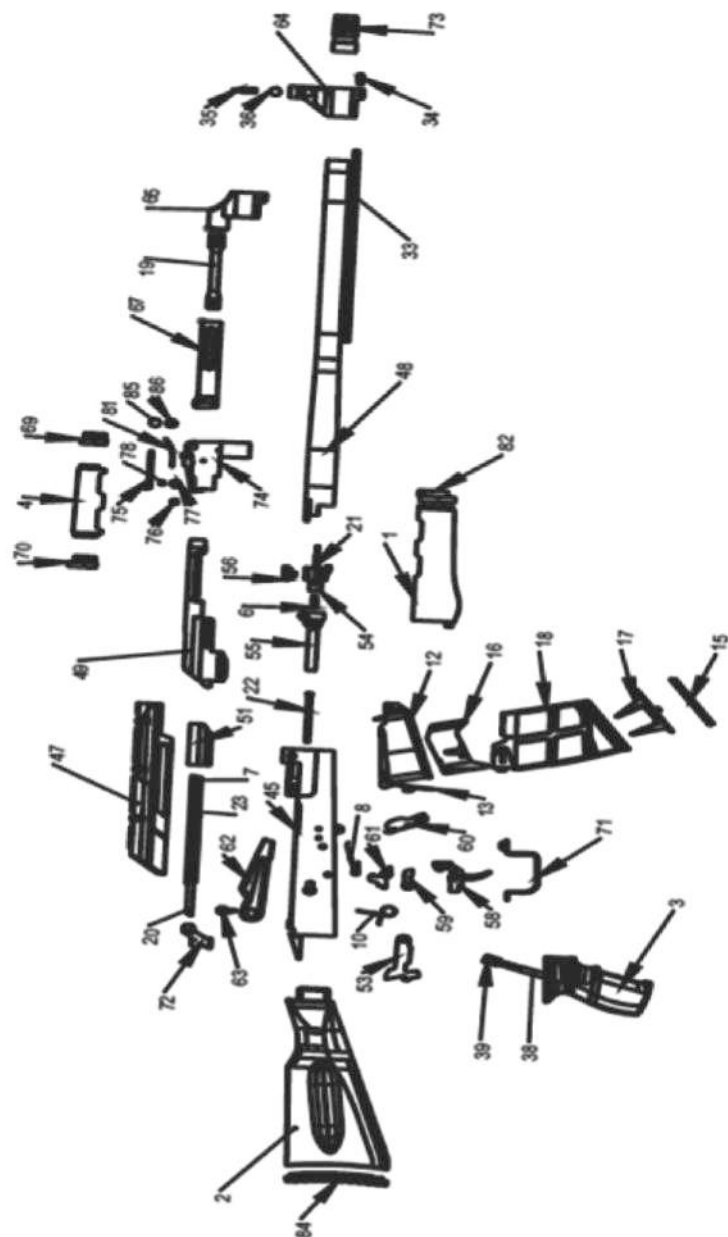
Note: Always use ammunition that is powerful enough to fully cycle the action. Minimum recommended load is 1 1/8 oz, #8 shot or greater.

SAFETY LEVER

Safety lever is designed to prevent the trigger from being pulled when in the on "SAFE" position. It has two positions as on "SAFE" position and off "FIRE" position.



TECHNICAL DRAWING



PURCHASER'S RECORD

Model Number	_____
Purchase Date	_____
Gauge or Caliber	_____
Serial Number	_____
Purchase Price	_____
Store Name	_____



Eternal Arms İnşaat Silah San. İç ve Dış Tic. Ltd. Şti.

☎ +90 542 530 53 01

📍 Hacıakif Mahallesi Özdilek Caddesi No.86/B Beyşehir - Konya / TURKEY

🌐 www.eternalarms.com.tr ✉ export@eternalarms.com.tr

📘 Eternal Arms 📸 [eternal_arms](https://www.instagram.com/eternal_arms)