



ETERNAL  
FX 12  
VERTICAL MAGAZINE  
SEMI-AUTO SHOTGUN  
OWNER'S MANUAL



READ AND UNDERSTAND ALL OF THE CAUTIONS AND  
PROPER HANDLING PROCEDURES AND INSTRUCTIONS  
OUTLINED IN THIS BOOKLET BEFORE USING YOUR  
NEW FIREARM.

Thank you for buying an Eternal magazine fed semi-action shotgun, and welcome to the family.

We believe that safe firearms handling is the most important consideration of anyone who uses firearms and ammunition. Please take a few minutes to thoroughly read and understand this instruction manual included with this shotgun.

You should completely understand this manual before you practice loading, unloading and firing with live ammunition.



### **REMEMBER, FIREARMS SAFETY DOES DEPEND ON YOU!**

Always keep this manual with your firearm. Make sure you understand all the warnings, operation instructions and safety procedures. When you lend, give or sell the firearm, be sure this manual goes with it.

The below Commandments of Firearm Safety should be etched in your memory forever. Let them govern your action wherever and whenever you're involved with firearms in the field, on the range, or in your home. Please take the time to review and understand these rules.

1. Always keep the muzzle pointed in a safe direction. Watch the muzzle at all time, never point a gun, accidentally or intentionally, at any person or anything you do not intend to shoot. Identify the target before shooting.
2. Always treat gun as if it is loaded – it may be!
3. Keep your finger off the trigger while operating the action and at all other times until you are ready to shoot.
4. Keep the safety “on” or in the “safe” position at all times until you're ready to fire. Do not rely on your gun's safety, the safety on any gun is a mechanical device and is not intended as a substitute for common sense or safe gun handling.
5. Learn how your gun functions and handles. If you do not thoroughly understand the proper use and care of your gun, seek the advice of someone who is knowledgeable
6. Do not alter or modify any part of the firearm.
7. Store guns unloaded, separate from any ammunition, and out of the reach of children
8. Be sure the barrel is clear of any obstructions before loading. Make it a habit to check the barrel every time before loading.

9. Be sure you have and use the proper ammunition. A 20 gauge shell will enter a 12 gauge chamber far enough so that a 12 gauge shell can be loaded behind it. Also, a 3" shell may fit into 2 ¾ "chamber, but the crimp at the mouth of the shell will unfold into the forcing cone. If either of these things occurs and you fire the gun, the gun will explode, damaging the gun and possibly causing serious injury or death to you and those around you.
10. Wear protective shooting glasses and adequate ear protection when shooting.
11. Never climb or jump over anything, such as a tree, fence with a loaded gun. Open the barrel, remove the shells and hand the gun to someone else or place it on the ground on the other side of the obstacle before crossing it yourself. Do not lean a gun against a tree or other object; it could fall and possibly discharge.
12. Do not shoot at a hard surface or at water. Bullet and shot can ricochet or bounce off and travel in unpredictable directions with great velocity.
13. Never transport a loaded gun. DO NOT place a loaded gun into a vehicle. The gun should be unloaded and placed into a case when not in use.
14. Never drink alcoholic beverages before or during shooting.



### **READ AND FULLFILL ALL WARNINGS**

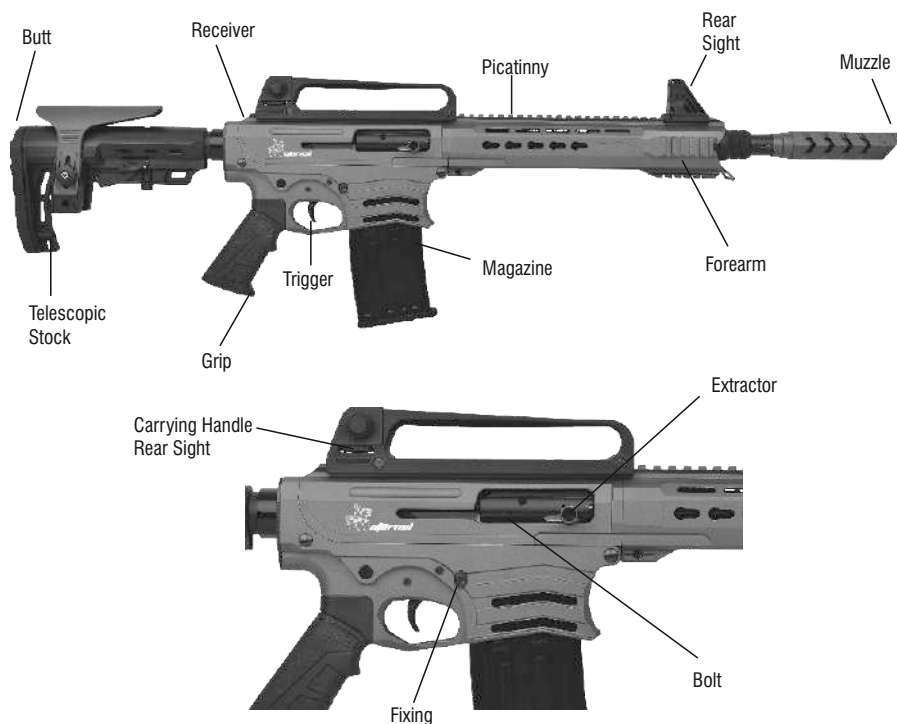
Now that you're a gun owner you have the obligation to help ensure that shooting sports are safe for everyone participants and bystanders alike. You can do that by practicing these principles of firearm safety and passing them on to others especially new shooters. Set an example for beginners. Be a guide to their safe entry into the exciting world of shooting sports. Invest your time and patience for the love of the sport and for its future. After all, it's your love of the sport that led you to buy a new Eternal shotgun.

Firearm ownership is a right and privilege. It's a privilege which carries with it a personal responsibility to use your firearm in a way which will ensure your safety and the safety of others. The preservation of this right and privilege depends on the personal commitment of you and your fellow shooters to the safe and responsible use of firearms. Let the Commandments of Firearm Safety outlined in this book guide you at all times. Teach and promote these rules whenever you can. Remember, firearm safety depends on you! That's the only way to really enjoy your new firearm and to preserve sport shooting as we know it today.

## ABOUT YOUR MAGAZINE FED SEMI-AUTO SHOTGUN

The FX 12 magazine fed semi-auto shotgun is gas operated. It is capable of six (5+1) or eleven (10+1) in rapid succession with each pull of trigger. Upon firing, high-pressure gas from behind the shot charge passes through two ports in the barrel, through the gas bracker and into gas cylinder. High-pressure gases force the gas piston rearward, applying pressure to the piston rod. As the piston rod moves rearward, it pushes the bolt assembly rearward, operating the action. As the bolt assembly moves rearward, it recocks the hammer, and ejects the fired shell. After full rearward travel, the bolt assembly returns forward, picking up a new shell from the magazine and chambers it automatically. After the last shell has been fired, the bolt assembly locks to the rear, instead of returning forward. This facilitates speedy reloading. The short-stroke of the gas piston along with the

snug, gas sealing fit of the piston rod limits the amount of combustion gases blown out of the gas cylinder and into the receiver.



## SAFETY BUTTON

It is located at the rear of the trigger on the trigger housing. The safety button is disengaged if the red ring on its left side is exposed. In this position the shotgun is ready to fire. To engage the safety button, push it fully to the right until its red ring disappears and it moves no further in the same direction. The safety is now ON, blocking the trigger from being pulled. To take the safety OFF push the button fully to the left, exposing its red ring. The trigger can now be pulled.

### THREE THINGS TO REMEMBER ABOUT SAFETIES:

- 1. NEVER TOTALLY DEPEND ON A MECHANICAL SAFETY**
- 2. NO MECHANICAL SAFETY IS “CHILDPROOF” OR “FOOLPROOF”.**
- 3. TREAT EVERY SHOTGUN AS IF YOU EXPECT ITS MECHANICAL SAFETY NOT TO WORK.**

## ASSEMBLY & DISASSEMBLY

Your new Eternal shotgun is already assembled in its gun case. The gun case has the following items;



2	2 Rounds
3	5 Rounds
4	10 Rounds
5	Suppressor
6	Extension Tube Choke
7	Gun Oil
8	Flexible Swivel
9	Bipod
10,11,12	Allen Key Set
13	Yellow Safety Lock
14	Key Ring

## DISASSEMBLY

This shotgun is designed to work with its original parts. It must never be altered or changed. Changing or altering any part of your shotgun may result in serious injuries to you or others, and is NOT RECOMMENDED by the manufacturer.

Please use the below instructions to dissamble;



**1.** Remove the magazine with using the magazine catch button (66).



**2.** Put the yellow safety lock into magazine tube. Do not remove this lock until using the shotgun.



**3.** Remove the screw using the key which is in the gun case. Turn it counter-clock wise.



**4.** Turn the muzzle break clockwise to remove it from the barrel.



**5.** Keep the shotgun with yellow safety lock always.



**6.** Push the takedown catch (74) until it is not seen.



**7.** Pull carefully while you are pushing the pivot pin (69).

**8.** Break the two bodies as shown in the picture.





**9.** Loosen the Fore-End Nut (20) using the proper key.



**10.** Loosen the items 19 and 20 with pulling the swivel stud.



**11.** Loosen these 2 screws with 4 mm allen key.



**12.** And pull the Fore-End towards the arrow.



**13.** Remove the action bar (100) as shown at the picture.



**14.** Remove the retaining pin (84) towards the arrow.



**15.** Remove the bolt and barrel from each other.

**16.** Loosen the stock support nut (3) towards to the arrow with the key.



**17.** After removing the Back swivel (2) , turn the stock clock-wise to remove.

**18.** With this red part, you can adjust the stock and also adjust the cheek distance with loosen the screw on the right.





You can assembly the suppressor (25) when the swivel stud (19) and fore end nut (20) are dissembled.

**Do not assembly suppressor just after shooting because of the high temperature!..**

## LOADING THE SHOTGUN

### WARNING!

- Always keep your fingers away from the trigger if you do not intend to fire.
- Always check cartridge chamber and receiver to see that the shotgun is not already loaded.
- While you load the shotgun, always point the barrel in a safe direction.
- Always use the correct ammo size, which your shotgun is chambered.
- Always keep the safety “ON” while loading your shotgun.

1. Point the muzzle in a safe direction.
2. Put safety ON.
3. After retracting the Cocking Handle push the Cocking Handle Retaining Latch upwards to safely keep the Bolt retracted.
4. Place the cartridges on Box Magazine Spring Follower with brass heads facing the shell holding lips.
5. Carefully insert your loaded Box Magazine into your shotgun. While inserting the Box Magazine, brass heads of cartridges loaded into the Box Magazine must face the Trigger Guard. Make sure the Box Magazine Latch is completely engaged and tightly holds the Box Magazine.
6. Keeping your fingers away from the path of the Bolt, press the Bolt Release Button. Now you have placed your first cartridge into the Barrel.



**SHOTGUN IS NOW LOADED AND READY TO FIRE.**



## **FIRING THE SHOTGUN**

### **WARNING!**

When firing, keep your fingers and other objects away from the path of the bolt and the bolt cocking handle since they move backward and forward with considerable force and velocity. Keep the safety “ON” and your fingers outside the trigger guard until you are actually ready to fire and aimed at your intended target. Bolt will remain open (locked to the rear) after the last cartridge is fired, but never rely on this. Always check with visually to verify that no cartridge is left in the chamber and magazine. Your semi auto shotgun, like other semi auto shotguns, feeds the next cartridge from the magazine into the cartridge chamber each time you fire. Since no mechanical force is necessary to fire another cartridge after the previous one is ejected, always be aware that the shotgun is ready to fire as long as it is loaded.

Fire with your shotgun as follows;

- Wear eye and ear protection.
- Engage safety and load your shotgun
- Point the barrel at your intended target.
- Disengage safety and take aim.
- Press the trigger.

It is not uncommon while loading or firing any semi-automatic shotgun to experience a malfunction in which an unfired cartridge or fired cartridge case becomes jammed between the bolt and the barrel. Clear such a stoppage as follows. Point the muzzle in a safe direction. Put the safety “ON”. If possible, detach the Box Magazine to prevent the next cartridge in the magazine from being released and adding to the jam. Pull back the bolt and hold or lock it to the rear. The jammed cartridge or case can then be removed by shaking it out, or picking it out with your fingers.

### **WARNING!**

•If the trigger is pulled and a “click” is heard but a chambered cartridge fails to fire, follow the below instructions:

1. Point the shotgun in a safe direction.
2. Engage safety and remove the Box Magazine.

- 3. Wait 30 seconds.
- 4. Eject the cartridge from the chamber by retracting the bolt. Examine the cartridge primer. If it has been deeply indented by the firing pin, the cartridge is defective. If it has been indented lightly or not at all, rechamber the cartridge and try again.
- 5. If it still does not fire unload the shotgun and take it to a qualified gunsmith.

UNLOADING THE SHOTGUN




WARNING!

Keep your fingers off the trigger and keep the safety “ON”.

Unload your shotgun as follows:

- Point the shotgun in a safe direction and engage the safety.
- Press the box magazine retaining latch and detach the box magazine.
- Retract the bolt cocking handle to eject the the cartridge from the chamber.
- To remove the cartridges from the magazine push them in the opposite direction.
- Disengage safety and pointing the shotgun in a safe direction (even though it may be unloaded), depress the trigger to lower the hammer.

USING CHOKE

Marking	USAGE OF CHOKE TUBES	NOTCHES
*	Suitable for longer rangers (DONT USE SLUGS)	
***	Suitable for medium ranger (DONT USE SLUGS)	
*****	Suitable for short ranges	

CARE AND CLEANING

WARNING:

Place the safety in the “safe” position and lock the bolt the rear. Be certain your shotgun s magazine, feed mechanism and chamber are unloaded. Always wear protective safety glasses during all assembly, disassembly and cleaning procedures.

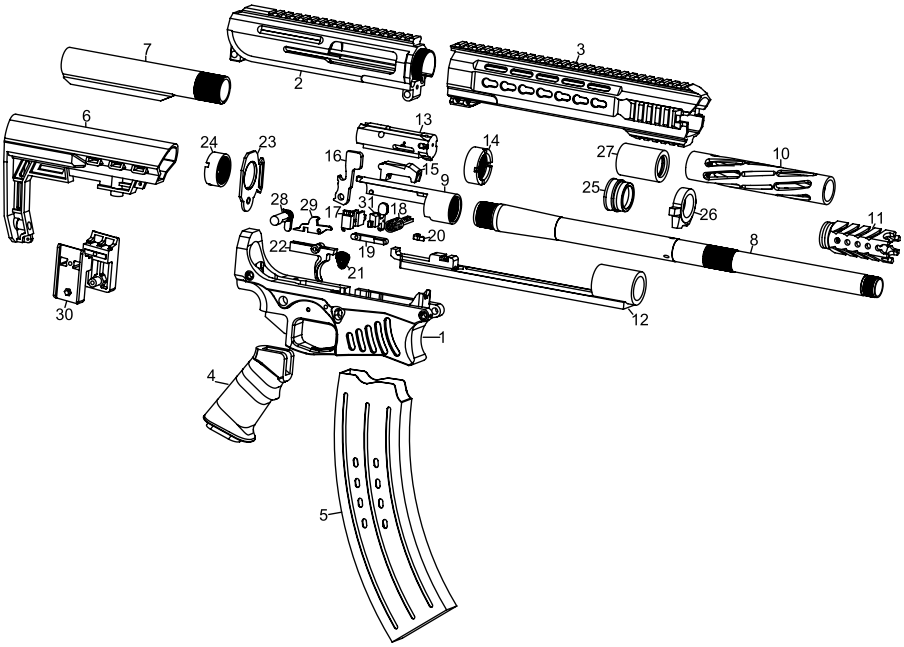
Disassemble, clean and lubricate the shotgun when grease, dirt or powder fouling accumulates in the barrel and action. To avoid rust and corrosion, clean and lubricate after each use. Materials and equipment necessary for cleaning and lubrication; Cleaning rod, Cotton bore patches, Brass bore brush, Powder solvent, Small soft brush, Good quality shotgun oil.

- After use, to remove any powder and lead residue in the bore, scrub the barrel and chamber using the bore brush with powder solvent. Then swab the bore and the chamber with shotgun oiled cotton patches to protect from rust and corrosion.
- After a high number of shots (about 500 shots), disassemble the bolt assembly and clean it with a soft brush and shotgun oil. Then dry it carefully with a soft cloth and oil the parts lightly.
- Clean the outside of the magazine tube with a shotgun oiled soft cloth and then dry it with a soft cloth and oil the parts lightly.
- Any powder on the chamber, barrel, etc. can be cleaned with a brush and powder solvent.
- All external surfaces should be wiped down with light coat of rust preventative.
- Avoid using too much solvent for bore cleaning, since prolonged contact may damage the finish of the shotgun. Make sure to wipe away all the excess solvent and lubricant.

## STORAGE

Clean thoroughly and oil your gun before storage. Store the gun in a case to prevent scratches and dents. Store your shotgun in a dry place to prevent corrosion. Store the gun away from children and in a place where it cannot be obtained by those unauthorized to use it. Always store gun unloaded and separately from any ammunition.

## DISASSEMBLED DIAGRAM



## PART LIST

- |                        |                          |
|------------------------|--------------------------|
| 1 Bottom Receiver      | 17 Latch                 |
| 2 Upper Receiver       | 18 Mechanism Handle      |
| 3 Forearm              | 19 Magazine Lock         |
| 4 Handle               | 20 Extractor             |
| 5 Magazine             | 21 Magazine Button       |
| 6 Stock                | 22 Trigger               |
| 7 Stock Fitting Pipe   | 23 Belt Hanger           |
| 8 Barrel               | 24 Stock Fitting Plug    |
| 9 Chamber              | 25 Piston                |
| 10 Muzzle              | 26 Forearm Plug          |
| 11 Flash Hider         | 27 Gas Hole              |
| 12 Cocking Arm         | 28 Safety                |
| 13 Mechanism           | 29 Trigger Latch         |
| 14 Upper Receiver Plug | 30 Stock Adjusting Latch |
| 15 Lock                | 31 Latch                 |
| 16 Hammer              |                          |

## NOTES

.....

.....

.....

.....

.....

.....

.....

.....

.....

.....

.....

.....

.....

.....

.....



Eternal Arms İnşaat Silah San. İç ve Dış Tic. Ltd. Şti.

T: +90 542 530 53 01

Hacıakif Mahallesi Özdilek Caddesi No.86/B Beyşehir - Konya / TURKEY

[www.eternalarms.com.tr](http://www.eternalarms.com.tr)

[export@eternalarms.com.tr](mailto:export@eternalarms.com.tr)