



## SINGLE-BARREL SHOTGUN OWNER'S MANUAL



### FOR MODELS

\* **HW WOOD**

\* **W WOOD**

\* **HS SYNTHETIC**

\* **S SYNTHETIC**



READ AND UNDERSTAND ALL OF THE CAUTIONS AND  
PROPER HANDLING PROCEDURES AND INSTRUCTIONS  
OUTLINED IN THIS BOOKLET BEFORE USING YOUR  
NEW FIREARM.

Thank you for buying an Eternal single-barrel shotgun, and welcome to the family.

We believe that safe firearms handling is the most important consideration of anyone who uses firearms and ammunition. Please take a few minutes to thoroughly read and understand this instruction manual included with this shotgun.

You should completely understand this manual before you practice loading, unloading and firing with live ammunition.



## **REMEMBER, FIREARMS SAFETY DOES DEPEND ON YOU!**

Always keep this manual with your firearm. Make sure you understand all the warnings, operation instructions and safety procedures. When you lend, give or sell the firearm, be sure this manual goes with it.

The below Commandments of Firearm Safety should be etched in your memory forever. Let them govern your action wherever and whenever you're involved with firearms in the field, on the range, or in your home. Please take the time to review and understand these rules.

1. Always keep the muzzle pointed in a safe direction. Watch the muzzle at all time, never point a gun, accidentally or intentionally, at any person or anything you do not intend to shoot. Identify the target before shooting.
2. Always treat gun as if it is loaded – it may be!
3. Keep your finger off the trigger while operating the action and at all other times until you are ready to shoot.
4. Keep the safety “on” or in the “safe” position at all times until you're ready to fire. Do not rely on your gun's safety, the safety on any gun is a mechanical device and is not intended as a substitute for common sense or safe gun handling.
5. Learn how your gun functions and handles. If you do not thoroughly understand the proper use and care of your gun, seek the advice of someone who is knowledgeable
6. Do not alter or modify any part of the firearm.
7. Store guns unloaded , separate from any ammunition, and out of the reach of children
8. Be sure the barrel is clear of any obstructions before loading Make it a habit to check the barrel every time before loading.

- 9.** Be sure you have and use the proper ammunition. A 20 gauge shell will enter a 12 gauge chamber far enough so that a 12 gauge shell can be loaded behind it. Also, a 3" shell may fit into 2 ¾ "chamber, but the crimp at the mouth of the shell will unfold into the forcing cone. If either of these things occurs and you fire the gun, the gun will explode, damaging the gun and possibly causing serious injury or death to you and those around you.
- 10.** Wear protective shooting glasses and adequate ear protection when shooting.
- 11.** Never climb or jump over anything, such as a tree, fence with a loaded gun. Open the barrel, remove the shells and hand the gun to someone else or place it on the ground on the other side of the obstacle before crossing it yourself. Do not lean a gun against a tree or other object; it could fall and possibly discharge.
- 12.** Do not shoot at a hard surface or at water. Bullet and shot can ricochet or bounce off and travel in unpredictable directions with great velocity.
- 13.** Never transport a loaded gun. DO NOT place a loaded gun into a vehicle. The gun should be unloaded and placed into a case when not in use.
- 14.** Never drink alcoholic beverages before or during shooting.



### **READ AND FULLFILL ALL WARNINGS**

Now that you're a gun owner you have the obligation to help ensure that shooting sports are safe for everyone participants and bystanders alike. You can do that by practicing these principles of firearm safety and passing them on to others especially new shooters. Set an example for beginners. Be a guide to their safe entry into the exciting world of shooting sports. Invest your time and patience for the love of the sport and for its future. After all, it's your love of the sport that led you to buy a new Eternal shotgun.

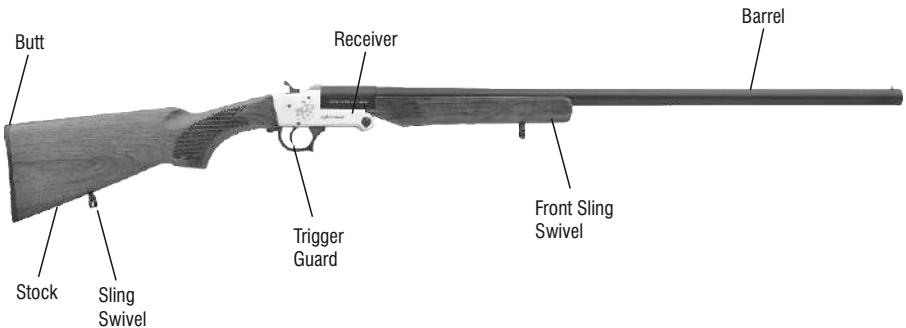
Firearm ownership is a right and privilege. It's a privilege which carries with it a personal responsibility to use your firearm in a way which will ensure your safety and the safety of others. The preservation of this right and privilege depends on the personal commitment of you and your fellow shooters to the safe and responsible use of firearms. Let the Commandments of Firearm Safety outlined in this book guide you at all times. Teach and promote these rules whenever you can. Remember, firearm safety depends on you! That's the only way to really enjoy your new firearm and to preserve sport shooting as we know it today.

## ABOUT YOUR SINGLE BARREL SHOTGUN

The Eternal Single-Barrel shotgun is produced on state of the art CNC machinery to extracting tolerances. It features a steel receiver and synthetic furniture for light weight and corrosion resistance. It folds up into a small package for easy carry in the field. This makes it a handy survival gun.

As a safety measure, the gun is equipped with «rebounding» type hammer. So it will not rest directly against the back of the firing pins when at rest. The trigger must be depressed to allow the hammer to make contact with the firing pin to discharge the cartridge. This exposed hammer shotgun requires your full attention when lowering the hammer on an unfired shell. To decock a hammer with a shell in the chamber, you must point the muzzle in a safe direction; completely controlling the hammer, pull the trigger and ease the hammer gently forward. Never allow the hammer to snap forward. The gun may discharge. This shotgun has no manual safety.

The Eternal Single-Barrel Shotguns are available in 12 Cal, 16 Cal, 20 Cal, and 410 Cal. And the models which have hammer outside and hidden hammer.



**Do not allow your thumb to slip off the hammer as it is being cocked. Care must be used when cocking hammer if wearing gloves, when hands are wet or if you have limited strength in your hands.**

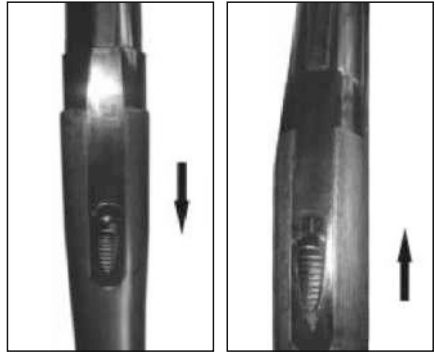
## LOWERING THE HAMMER

1. Keeping the muzzle pointed in a safe direction, carefully lower the shotgun. Carefully hold the hammer back securely with your thumb and pull the trigger.

2. Slowly let the hammer move forward approximately 1/8 inches , then release the trigger.

3. Continue to let the hammer down until it is fully forward.

4. Practice this procedure with an empty firearm until you are thoroughly familiar with it.



## LOADING THE SHOTGUN



### WARNINGS:

1. Before loading, make sure the inside of the barrel is free of dirt or other obstructions.

2. Always check each shell to ensure it is of the correct gauge and in good condition before loading the firearm.

3. Keep fingers away from the trigger while loading.

Point the firearm in a safe direction.

Pull back on the trigger guard and push down on the barrel to open the gun.

Place one loaded shell of the correct gauge into the chamber of the barrel.

Close the barrel keeping the firearm pointed in a safe direction all the times.

The firearm is now loaded and ready to fire.

To fire the shotgun, pull the hammer to the rear fully until it is cocked. Keeping your sights aligned with the target, pull the trigger firing the gun.

## CARE AND CLEANING

**WARNING:** Place the safety in the “safe” position and lock the bolt the rear. Be certain your shotgun’s magazine, feed mechanism and chamber are unloaded. Always wear protective safety glasses during all assembly, disassembly and cleaning procedures.

Disassemble, clean and lubricate the shotgun when grease, dirt or powder fouling accumulates in the barrel and action. To avoid rust and corrosion, clean and lubricate after each use.

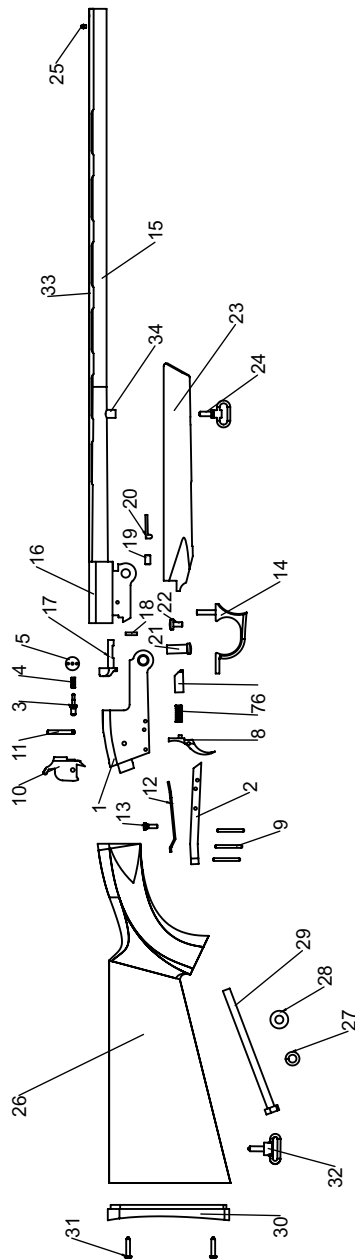
Materials and equipment necessary for cleaning and lubrication; Cleaning rod, Cotton bore patches, Brass bore brush, Powder solvent, Small soft brush, Good quality shotgun oil.

- After use, to remove any powder and lead residue in the bore, scrub the barrel and chamber using the bore brush with powder solvent. Then swab the bore and the chamber with shotgun oiled cotton patches to protect from rust and corrosion.
- After a high number of shots (about 500 shots), disassemble the bolt assembly and clean it with a soft brush and shotgun oil. Then dry it carefully with a soft cloth and oil the parts lightly.
- Clean the outside of the magazine tube with a shotgun oiled soft cloth and then dry it with a soft cloth and oil the parts lightly.
- Any powder on the chamber, barrel, etc. can be cleaned with a brush and powder solvent.
- All external surfaces should be wiped down with light coat of rust preventative.
- Avoid using too much solvent for bore cleaning, since prolonged contact may damage the finish of the shotgun. Make sure to wipe away all the excess solvent and lubricant.

## STORAGE

Clean thoroughly and oil your gun before storage. Store the gun in a case to prevent scratches and dents. Store your shotgun in a dry place to prevent corrosion. Store the gun away from children and in a place where it cannot be obtained by those unauthorized to use it. Always store gun unloaded and separately from any ammunition.

# SINGLE BARREL TH MODEL GENERAL ASSEMBLY

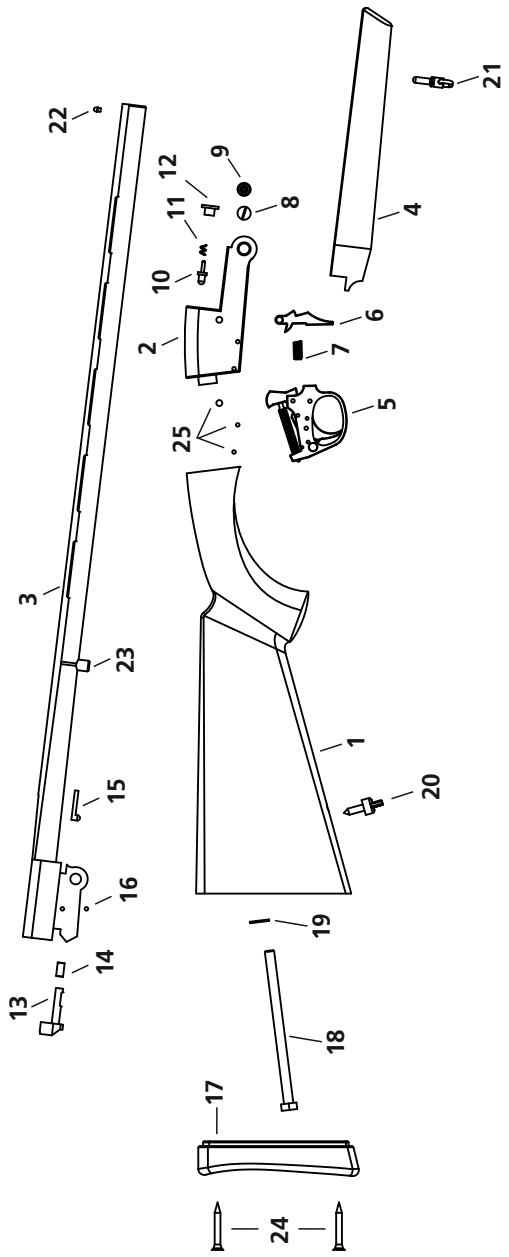


## TH MODEL PART LIST

1	RECEIVER	18	2.9X12 PIN
2	TAIL	19	5.45X10 PIN
3	FIRING PIN	20	FORK
4	FIRING PIN SPRING	21	MAIN SCREW
5	FIRING PIN COVER	22	MAIN SCREW LOCK
6	SLIDE	23	FORE END
7	TRIGGER SPRING	24	SLING SWIVEL
8	TRIGGER	25	FORESIGHT
9	3X28.5 PIN	26	STOCK
10	HAMMER	27	14.5X8.3X2 NUT
11	4X28.7 PIN	28	18.7X8.3X2.5 NUT
12	HAMMER SPRING	29	STABILIZER
13	M4 SPECIAL SCREW	30	RECOIL PAD
14	BARRIER	31	RECOIL PAD SCREW
15	BARREL	32	BELTING
16	CAP	33	RAIL
17	PULLER	34	FOREEND STABILIZER



**SINGLE BARREL TK MODEL GENERAL ASSEMBLY**



## TK MODEL PART LIST

1)	STOCK
2)	RECIEVER
3)	BARREL
4)	FORE-END
5)	TRIGGER GROUP
6)	BOLT HANDLE (TAKE DOWN LEVER )
7)	BOLT HANDLE SPRING
8)	RECIEVER MAIN SCREW
9)	RECIEVER MAIN SCREW
10)	FIRING PIN
11)	FIRING PIN SPRING
12)	FIRING PIN BUSHING
13)	EJECTOR
14)	EJECTOR EXTENTION
15)	EJECTOR SEAR
16)	EJECTOR SEAR PIN
17)	BUTT PLATE ( RECOIL PAD)
18)	STOCK BOLT
19)	STOCK BOLT LOCK WASHER
20)	SLING SWIVEL
21)	FORE-END SLING SWIVEL
22)	FRONT SIGHT
23)	BARREL SLING SWIVEL
24)	BUTT PLATE SCREW
25)	TRIGGER GROUP PINS

READ AND UNDERSTAND ALL OF THE CAUTIONS AND PROPER HANDLING PROCEDURES OUTLINED IN THIS BOOKLET BEFORE USING YOUR NEW SHOTGUN.

DO NOT, UNDER ANY CIRCUMSTANCES, ALTER THE TRIGGER, SAFETY OR OTHER PARTS OF THE FIRING MECHANISM OF THIS OR ANY OTHER SHOTGUN. FAILURE TO OBEY THIS WARNING MAY RESULT IN INJURY OR DEATH TO YOURSELF OR OTHERS.

IF YOUR SHOTGUN SHOULD REQUIRE SERVICE OR REPAIRS, PLEASE CONTACT YOUR DEALER AT FIRST. FOR OTHER TECHNICAL QUESTIONS ABOUT YOUR SHOTGUN, YOU MAY CONTACT US DIRECTLY;



Eternal Arms İnşaat Silah San. İç ve Dış Tic. Ltd. Şti.

T: +90 542 530 53 01

Hacıakif Mahallesi Özdilek Caddesi No.86/B Beyşehir - Konya / TURKEY

[www.eternalarms.com.tr](http://www.eternalarms.com.tr)

[export@eternalarms.com.tr](mailto:export@eternalarms.com.tr)