



SEMI-AUTO SHOTGUN OWNER'S MANUAL



FOR MODELS

- | | |
|-------------------|----------------------|
| * IMPACT | * MASTERPIECE |
| * DE LUXE | * IMMORTAL |
| * LETHAL-X | * SPECTACULAR |



READ AND UNDERSTAND ALL OF THE CAUTIONS AND
PROPER HANDLING PROCEDURES AND INSTRUCTIONS
OUTLINED IN THIS BOOKLET BEFORE USING YOUR
NEW FIREARM.

Thank you for buying an Eternal semi-action shotgun, and welcome to the family.

We believe that safe firearms handling is the most important consideration of anyone who uses firearms and ammunition. Please take a few minutes to thoroughly read and understand this instruction manual included with this shotgun.

You should completely understand this manual before you practice loading, unloading and firing with live ammunition.



REMEMBER, FIREARMS SAFETY DOES DEPEND ON YOU!

Always keep this manual with your firearm. Make sure you understand all the warnings, operation instructions and safety procedures. When you lend, give or sell the firearm, be sure this manual goes with it.

The below Commandments of Firearm Safety should be etched in your memory forever. Let them govern your action wherever and whenever you're involved with firearms in the field, on the range, or in your home. Please take the time to review and understand these rules.

1. Always keep the muzzle pointed in a safe direction. Watch the muzzle at all time, never point a gun, accidentally or intentionally, at any person or anything you do not intend to shoot. Identify the target before shooting.
2. Always treat gun as if it is loaded – it may be!
3. Keep your finger off the trigger while operating the action and at all other times until you are ready to shoot.
4. Keep the safety “on” or in the “safe” position at all times until you're ready to fire. Do not rely on your gun's safety, the safety on any gun is a mechanical device and is not intended as a substitute for common sense or safe gun handling.
5. Learn how your gun functions and handles. If you do not thoroughly understand the proper use and care of your gun, seek the advice of someone who is knowledgeable
6. Do not alter or modify any part of the firearm.
7. Store guns unloaded, separate from any ammunition, and out of the reach of children
8. Be sure the barrel is clear of any obstructions before loading. Make it a habit to check the barrel every time before loading.

- 9.** Be sure you have and use the proper ammunition. A 20 gauge shell will enter a 12 gauge chamber far enough so that a 12 gauge shell can be loaded behind it. Also, a 3" shell may fit into 2 ¾ "chamber, but the crimp at the mouth of the shell will unfold into the forcing cone. If either of these things occurs and you fire the gun, the gun will explode, damaging the gun and possibly causing serious injury or death to you and those around you.
- 10.** Wear protective shooting glasses and adequate ear protection when shooting.
- 11.** Never climb or jump over anything, such as a tree, fence with a loaded gun. Open the barrel, remove the shells and hand the gun to someone else or place it on the ground on the other side of the obstacle before crossing it yourself. Do not lean a gun against a tree or other object; it could fall and possibly discharge.
- 12.** Do not shoot at a hard surface or at water. Bullet and shot can ricochet or bounce off and travel in unpredictable directions with great velocity.
- 13.** Never transport a loaded gun. DO NOT place a loaded gun into a vehicle. The gun should be unloaded and placed into a case when not in use.
- 14.** Never drink alcoholic beverages before or during shooting.



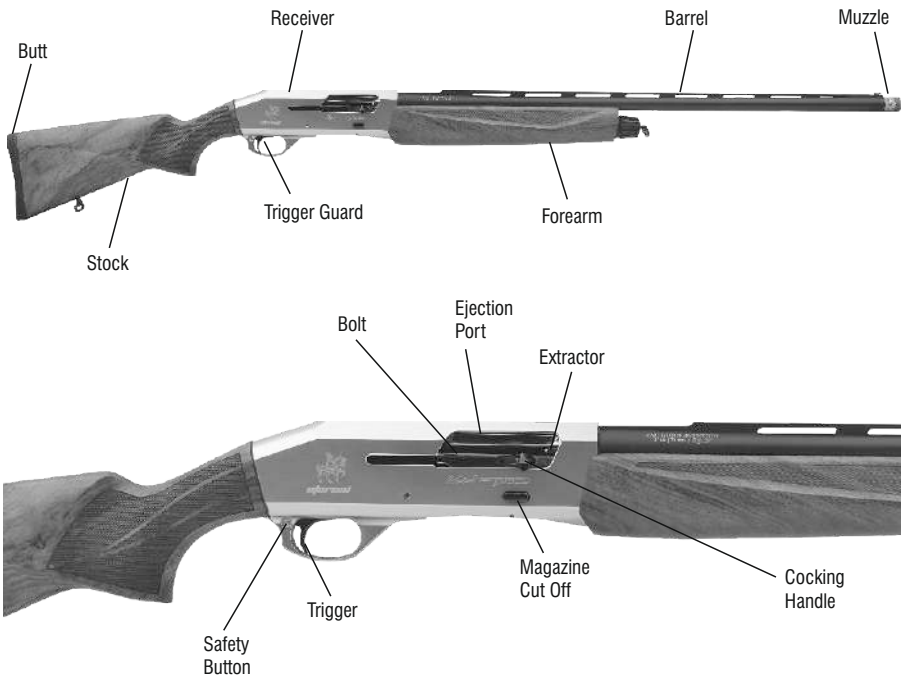
READ AND FULLFILL ALL WARNINGS

Now that you're a gun owner you have the obligation to help ensure that shooting sports are safe for everyone participants and bystanders alike. You can do that by practicing these principles of firearm safety and passing them on to others especially new shooters. Set an example for beginners. Be a guide to their safe entry into the exciting world of shooting sports. Invest your time and patience for the love of the sport and for its future. After all, it's your love of the sport that led you to buy a new Eternal shotgun.

Firearm ownership is a right and privilege. It's a privilege which carries with it a personal responsibility to use your firearm in a way which will ensure your safety and the safety of others. The preservation of this right and privilege depends on the personal commitment of you and your fellow shooters to the safe and responsible use of firearms. Let the Commandments of Firearm Safety outlined in this book guide you at all times. Teach and promote these rules whenever you can. Remember, firearm safety depends on you! That's the only way to really enjoy your new firearm and to preserve sport shooting as we know it today.

ABOUT YOUR PUMP-ACTION SHOTGUN

The Eternal semi-auto shotgun is gas operated. It is capable of five (seven in defense models) in rapid succession with each pull of trigger. Upon firing, high-pressure gas from behind the shot charge passes through two ports in the barrel, through the gas bracker and into gas cylinder. High-pressure gases force the gas piston rearward, applying pressure to the piston rod. As the piston rod moves rearward, it pushes the bolt assembly rearward, operating the action. As the bolt assembly moves rearward, it recocks the hammer, and ejects the fired shell. After full rearward travel, the bolt assembly returns forward, picking up a new shell from the magazine and chambers it automatically. After the last shell has been fired, the bolt assembly locks to the rear, instead of returning forward. This facilitates speedy reloading. The short-stroke of the gas piston along with the snug, gas sealing fit of the piston rod limits the amount of combustion gases blown out of the gas cylinder and into the receiver.



SAFETY BUTTON

The safety is designed to stop the trigger mechanism. The safety button is located behind the trigger, and provides protection against accidental or unintentional discharge under normal usage when properly used. To engage the safety, push the button so that it protrudes from the right side of the gun and the RED BAND MARKING CAN NOT BE SEEN. The safety should always be in the “on” or “safe” position until you intend to fire the gun. When you are ready to fire the gun, press the safety button to the “off” position so that the safety protrudes from the left side of the gun and RED BAND



“SAFE” Position



“FIRE” Position

MARKING IS SHOWING.

Do not depend on the red color alone to indicate your firearms “safety” status. Time, exposure to the elements, and the abrasive action of cleaning agents can erase it. Failure to follow this warning could result in serious injury or death.



Never test the orientation or function of the safety while your shotgun is loaded or pointed in an unsafe direction.

AMMUNITION USE ONLY SUITABLE AMMUNITION!.

This gas –operated semi-auto shotgun is chambered for 3” magnum shells. It designed to be used with factory-loaded shells between 2 ¾” and 3” in length. For 12 gauge use the cartridges between 28 gr and 52 gr . For 20 gauge use the cartridges between 25 gr and 35 gr.

Never use cartridges with a case longer than the chamber, as this would have serious consequences for both gun and the shooter.

ASSEMBLY INSTRUCTIONS

Your new semi-auto shotgun is packed dismantled in its box, with the barrel removed and the forearm still attached to the magazine tube.

WARNING: It is important to follow the exact sequence for assembly steps in order to properly assemble your shotgun always place the “safety” in the “SAFE” position before beginning assembly procedures.

1- Take the receiver in hand. First, lock the bolt rearward by pulling the operating handle fully to the rear. Remove the forearm from the magazine tube by unscrewing the magazine cap and sliding the forearm forward, off the magazine tube.

2- Component of the gas system – the sleeve, sleeve spring and gas piston will remain in place and do not need to be removed, except for cleaning. If the components of the gas system have been removed, reinstall them.

3- Slide the sleeve spring onto the magazine tube followed by the sleeve with the piston rod end first. Check the piston rod to make sure it will align with the slot on the right side (ejection port side) of the receiver. Make sure the sleeve spring is properly positioned in the sleeve.

4- Slide the gas piston into gas bracket.

5- With the gun in the vertical position, line the gas bracket and gas piston over the magazine tube. The barrel extension should slip solidly down into the receiver. Make sure the piston rod moves freely in its slot in the receiver.

6- Replace the forearm by sliding it onto the magazine tube and over the gas bracket so it sears securely. Install the magazine cap. Make sure the magazine cap is fully tightened down. Open and close the action several times and retighten the magazine cap. This will ensure a proper seal. If ;

1. Bolt does not slide forward

2. There is a gap between the fore-end and receiver

3. Barrel extension protrudes from the receiver

that means you have not assembled the shotgun properly. In such a case, immediately reverse assembly procedures and re-assemble your shotgun making sure that the barrel is completely inserted into the receiver, fore-end is completely in place and there are no gaps. If you still cannot assemble the shotgun properly take it to a qualified gunsmith for help.

AFTER THE BARREL HAS BEEN REMOVED FROM YOUR GUN, LEAVE THE BOLT IN THE OPEN POSITION . DO NOT PRESS THE CARRIER RELEASE BUTTON.

LOADING

WARNINGS:

1. At all during the loading procedure, be sure the muzzle is pointing in a safe direction.
2. Always keep the safety in the “SAFE” position.
3. Always keep your fingers away from the trigger if you do not intend to fire.
4. Always check the cartridge chamber, magazine tube and receiver to see that the shotgun is not already loaded.

With the slide fully forward, press a shell nose first through the bottom ejection port into the rear of the magazine tube against the magazine spring follower until the rim of the shell slips in front of the cartridge stop. Load additional shells in the same manner until the magazine is full. To load a shell from magazine to chamber, depress the slide release button and cycle the slide. Another shell can then be loaded into the magazine. Test locking of the breechlock by attempting to retract the slide. The slide should not retract.



**SHOTGUN IS NOW LOADED
AND READY TO FIRE.**



USAGE OF MAGAZINE CUT-OFF

The magazine cut-off is located at the front end of the left side of the receiver. This cut-off has the purpose of locking the shells in the magazine so that they will not feed into the chamber. This permits you to quickly change the load in the chamber of the gun without going to the trouble of unloading the whole magazine.

To operate the magazine cut-off, merely pull the cut-off lever back. This will lock the shells in the magazine. Push the cut-off lever forward when you desire to release the shells in the magazine so that they will feed automatically as the gun is fired.

With the magazine cut-off in operation, the chamber empty, and the breech bolt locked in the rearward position, a shell may be instantly delivered from the magazine to the chamber by merely pushing the magazine cut-off forward.

NOTE: Always have cut-off in the forward position while loading and unloading the magazine.

USAGE OF THE “MIGRATORY MAGAZINE PLUG”

Migratory magazine plug when assembled decreases the capacity of the shotgun to 2 + 1 for safety reasons or for the regulations varying from country to country.

Engage safety and make sure that the shotgun is unloaded, Unscrew (counter-clockwise) the fore-end cap. With a snipe nose or hawk nosed pliers, start extracting the magazine spring retaining plug very slowly. While doing this, press and control the magazine spring retaining plug with your other hand to prevent the magazine spring flying out of the magazine tube with very high impact and velocity which may be very dangerous. Keeping the flat end of the migratory magazine plug at the top, insert it inside the magazine spring. Place the magazine spring retaining plug on the magazine spring and migratory magazine plug assembly. Then, with your fingers, compress the spring into the magazine tube very carefully, meanwhile, with your other hand press the magazine spring retaining plug downwards very slowly and tightly until it completely seats in its place and holds the magazine spring by itself. Screw (clockwise) the fore-end cap until it is completely in its place. Now the capacity of the shotgun is reduced to 2 + 1 (2 cartridges in the magazine tube and 1 in the cartridge chamber).

FIRING THE SHOTGUN

WARNINGS:

- 1-When firing, keep your fingers away from the path of the bolt and the bolt cocking handle since they move backward and forward with considerable force and velocity.
- 2-Keep the safety “ON” and your finger outside the trigger guard until you are actually ready to fire and aimed at your intended target.
- 3-Bolt will remain open (locked to the rear) after the last round is fired, but never rely on this. Always check to verify no cartridge is left in the chamber and magazine.
- 4-Your semi auto shotgun, like other semi auto shotguns, feed the next round from the magazine tube into the cartridge chamber each time you fire. Since no mechanical force is necessary to fire another round after the previous one is

ejected, always be aware that the shotgun is ready to fire as long as it is loaded.

With the chamber loaded, all that is necessary to fire the gun is to push in on the safety so that the red warning band is visible on the left side of the trigger guard and pull the trigger. The gas system ejects the fired shell and picks up a new shell from the magazine and chambers it automatically. This is repeated each time you pull the trigger until the last shell has been fired.



AFTER SHOOTING, IMMEDIATELY PLACE THE SAFETY IN THE “SAFE” POSITION

UNLOADING

With the chamber loaded, all that is necessary to fire the gun is to push in on the safety so that the red warning band is visible on the left side of the trigger guard and pull the trigger. The gas system ejects the fired shell and picks up a new shell from the magazine and chambers it automatically. This is repeated each time you pull the trigger until the last shell has been fired.

Whenever unloading, always be certain that the muzzle is pointed in a safe direction and that the safety is in the “SAFE” position. Unload your shotgun by grasping the operating handle a cycling the action until all rounds are ejected. Be sure magazine cut-off is in the forward position to empty rounds from the magazine. Always inspect the chamber, action; carrier and magazine very carefully after unloading to be sure all live rounds are cleared from the gun.

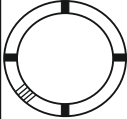
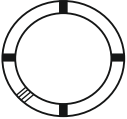
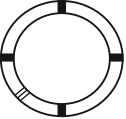
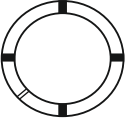

USAGE OF CHOKE TUBES

(Just for the models with supplied with chokes)

There are 5 different screw-in (inner) chokes that can be used on your shotgun.

1. F (Full /)
2. IM (Improved Modified //)
3. M (Modified ///)
4. IC (Improved Cylinder ////)
5. Cyl-Skeet (Cylinder-Skeet /////)

Extra full choke tubes are also available which are specially designed for turkey hunting.

	SKEET	IC	M	IM	F
CHOKE TUBE					
BBLs	CL	HHHH	HHH	HH	H

Your shotgun is packed with either 3-choke system or 5-choke system. Most common and preferred 3-choke system is F, M, IC chokes. However different combination 3-choke systems are possible depending on the requirements of different countries. 5-choke system contains all the inner chokes being F, IM, M, IC, Cyl-Skeet. Check the number and markings on the chokes to find out the inner choke configuration of your shotgun. All screw-in (inner) chokes have one, two, three, four or five notches, which indicate the type of the screw-in choke, i.e. F choke has one, IM has two, M has three, IC has four and Cyl-Skeet has five notches. Please also check the markings on chokes.

NOTE: M, IC and Cyl-Skeet choke tubes are good for steel shot. F & IM choke tubes are for lead shot only. Extra full choke tubes are for lead shot only Fixed Cylinder Bore Choke means the choke constriction is pre-machined into the barrel at the factory. No choke adjustments can be made and no interchangeable chokes can be put. 18"/46 cm and 20"/51 cm barrel pump action models are produced with this choke system as standard.

WARNING:

- 1.Make sure the shotgun is unloaded and the safety “ON” before you assemble / disassemble the chokes.
- 2.Under safety conditions (cartridge chamber empty, receiver empty, magazine tube empty, safety engaged), check whether the choke worked loose during use. In such a case, the choke must be tightened to the end by means of the choke wrench.

Assembly & disassembly of the inner chokes:

Take one of the inner chokes of your choice. Place it inside barrel and by means of choke wrench; screw (clockwise) it to the end until it is completely tightened. To disassemble, unscrew (counter-clockwise) by means of choke wrench and remove it.



DO NOT FIRE THIS SHOTGUN WITHOUT THE CORRECT CHOKE TUBE INSTALLED. PERMANENT DAMAGE MAY RESULT TO THE THREADS

CARE AND CLEANING

WARNING: Place the safety in the “safe” position and lock the bolt the rear. Be certain your shotgun’s magazine, feed mechanism and chamber are unloaded. Always wear protective safety glasses during all assembly, disassembly and cleaning procedures.

Disassemble, clean and lubricate the shotgun when grease, dirt or powder fouling accumulates in the barrel and action. To avoid rust and corrosion, clean and lubricate after each use.

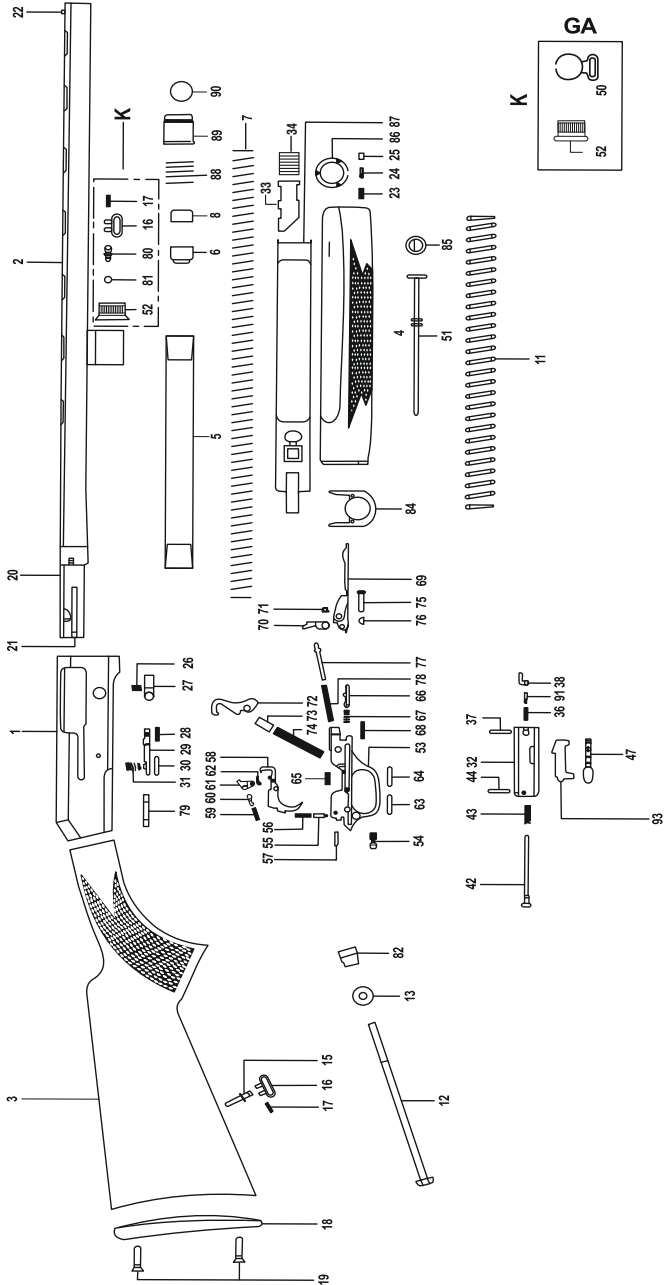
Materials and equipment necessary for cleaning and lubrication; Cleaning rod, Cotton bore patches, Brass bore brush, Powder solvent, Small soft brush, Good quality shotgun oil.

- After use, to remove any powder and lead residue in the bore, scrub the barrel and chamber using the bore brush with powder solvent. Then swab the bore and the chamber with shotgun oiled cotton patches to protect from rust and corrosion.
- After a high number of shots (about 500 shots), disassemble the bolt assembly and clean it with a soft brush and shotgun oil. Then dry it carefully with a soft cloth and oil the parts lightly.
- Clean the outside of the magazine tube with a shotgun oiled soft cloth and then dry it with a soft cloth and oil the parts lightly.
- Any powder on the chamber, barrel, etc. can be cleaned with a brush and powder solvent.
- All external surfaces should be wiped down with light coat of rust preventative.
- Avoid using too much solvent for bore cleaning, since prolonged contact may damage the finish of the shotgun. Make sure to wipe away all the excess solvent and lubricant.

STORAGE

Clean thoroughly and oil your gun before storage. Store the gun in a case to prevent scratches and dents. Store your shotgun in a dry place to prevent corrosion. Store the gun away from children and in a place where it cannot be obtained by those unauthorized to use it. Always store gun unloaded and separately from any ammunition.

SPARE PARTS



PART NO	DESCRIPTION
1	RECEIVER
2	BARREL
3	STOCK
4	FOREARM
5	MAGAZINE TUBE
6	MAGAZINE FOLLOWER
7	MAGAZINE SPRING
8	MAGAZINE SPRING RETAINER
11	ACTION SPRING
12	STOCK BOLT
13	STOCK BOLT WASHER
15	STOCK SWIVER STUD
16	STOCK SWIVEL
17	STOCK SWIVEL PIN
18	BUTT PLATE
19	BUTT PLATE SCREW
20	BEARING BOLT
21	EJECTOR
22	FRONT BEAD
23	MAGAZINE CAP SPRING
24	MAGAZINE CAP PIN
25	MAGAZINE CAP SCREW
26	BOLT RELEASE SPRING
27	BOLT RELEASE
28	BOLT RELEASE PIN
29	BOLT RELEASE LATCH
30	BOLT RELEASE LATCH PIN
31	BOLT RELEASE LATCH SPRING
32	BREECH BOLT
33	ARM PIPE
34	CONNECTION RUBBER
36	EXTRACTOR SPRING BOLT
37	EXTRACTOR RETAINIG PIN
38	EXTRACTOR
42	FIRING PIN
43	FIRING PIN SPRING
44	FIRING PIN RETAINER
47	OPERATING HANDLE
50	FRONT SWIVEL
51	MAGAZINE PLUG

PART NO	DESCRIPTION
52	MAGAZINE CAP
53	GUARD
54	SAFETY
55	SAFETY PLUNGER
56	SAFETY SPRING
57	SAFETY PLUNGER
58	TRIGGER
59	SEAR SPRING
60	SEAR PLUNGER
61	SEAR
62	SEAR PIN
63	TRIGGER PIN
64	TRIGGER PIN
65	TRIGGER SPRING
66	CARRIER PLUNGER
67	CARRIER SPRING
68	CARRIER RETAINING PIN
69	CARRIER
70	CARRIER LATCH
71	CARRIER LATCH PIN
72	HAMMER
73	HAMMER PLUNGER
74	HAMMER SPRING
75	TRIGGER ASSEMBLY PIN SLEEVE
76	TRIGGER ASSEMBLY PIN RETAINER
77	CARRIER LATCH PLUNGER
78	CARRIER LATCH SPRING
79	TRIGGER GUARD
80	SWIVEL STUD
81	SWIVEL STUD RETAINER
82	STOCK BOLT RECEIVER
84	PLATE
85	MAGAZINE PLUG RETAINER
86	MAGAZINE CAP SUPPORT
87	ACTION BAR
88	GAS PISTON SPRING
89	GAS PISTON
90	RUBBER GAS RING
91	EXTRACTOR SPRING
93	LOCKING BLOCK

READ AND UNDERSTAND ALL OF THE CAUTIONS AND PROPER HANDLING PROCEDURES OUTLINED IN THIS BOOKLET BEFORE USING YOUR NEW SHOTGUN.

DO NOT, UNDER ANY CIRCUMSTANCES, ALTER THE TRIGGER, SAFETY OR OTHER PARTS OF THE FIRING MECHANISM OF THIS OR ANY OTHER SHOTGUN. FAILURE TO OBEY THIS WARNING MAY RESULT IN INJURY OR DEATH TO YOURSELF OR OTHERS.

IF YOUR SHOTGUN SHOULD REQUIRE SERVICE OR REPAIRS, PLEASE CONTACT YOUR DEALER AT FIRST. FOR OTHER TECHNICAL QUESTIONS ABOUT YOUR SHOTGUN, YOU MAY CONTACT US DIRECTLY;



Eternal Arms İnşaat Silah San. İç ve Dış Tic. Ltd. Şti.

T: +90 542 530 53 01

Hacıakif Mahallesi Özdilek Caddesi No.86/B Beyşehir - Konya / TURKEY

www.eternalarms.com.tr

export@eternalarms.com.tr