



RONIN

LEVER ACTION INSTRUCTION MANUAL

Read the instructions and warnings in this manual carefully before using these firearms

1 - SAFETY WARNINGS

FIREARMS ARE DANGEROUS WEAPONS !

ASSURE SAFE AND PROPER HANDLING OF THIS SHOTGUN, BY READING AND UNDERSTANDING THE INSTRUCTIONS AND WARNINGS OUTLINED IN THIS MANUAL, BEFORE USING IT.



FAILURE TO OBEY THESE INSTRUCTIONS AND SAFETY WARNINGS MAY RESULT IN DAMAGE, OR INJURY, OR EVEN DEATH !

ALWAYS TREAT EVERY FIREARM AS IF IT IS LOADED.

ALWAYS POINT YOUR FIREARM TO A SAFE DIRECTION. NEVER POINT A FIREARM AT ANYTHING YOU DO NOT INTEND TO SHOOT.

DO NOT RELY ON THE SAFETY MECHANISMS OF THE FIREARMS. SAFETY MECHANISMS MAY NOT BE ABLE TO PREVENT AN ACCIDENTAL DISCHARGE.

DO NOT LOAD YOUR FIREARM UNTIL YOU ARE READY TO SHOOT.

DO NOT CARRY A LOADED FIREARM WHILE WALKING, RUNNING, CLIMBING OR JUMPING.

NEVER TRANSPORT A LOADED FIREARM. KEEP ALL FIREARMS UNLOADED DURING TRANSPORT.

DO NOT SHOOT UNLESS YOU ARE ABSOLUTELY SURE OF YOUR TARGET AND WHAT IS BEYOND IT. IF IN DOUBT, DO NOT SHOOT !

NEVER SHOOT AT HARD OR FLAT SURFACES, OR AT THE SURFACE OF WATER.

USE ONLY AMMUNITION THAT THE FIREARM IS CHAMBERED FOR, AS INDICATED ON THE BARREL.

ALWAYS USE CLEAN, DRY, ORIGINAL FACTORY-LOADED AMMUNITION.

ALWAYS CHECK AND MAKE SURE THAT THE BARREL IS CLEAN AND FREE OF OBSTRUCTIONS BEFORE LOADING AND SHOOTING A FIREARM.

ALWAYS WEAR EYE AND EAR PROTECTION WHILE SHOOTING. MAKE SURE THAT PEOPLE AROUND YOU ARE ALSO SIMILARLY PROTECTED.

NEVER LEAVE A LOADED FIREARM UNATTENDED.

STORE FIREARMS UNLOADED, IN CLEAN AND DRY PLACES, OUT OF THE REACH OF CHILDREN.

STORE FIREARMS AND AMMUNITION SEPARATELY.



NEVER ALTER ANY PART OF YOUR FIREARM. ANY ALTERATION OR ADJUSTMENT SHOULD BE PERFORMED BY A QUALIFIED GUNSMITH.

2 - DESCRIPTIONS AND TERMINOLOGY

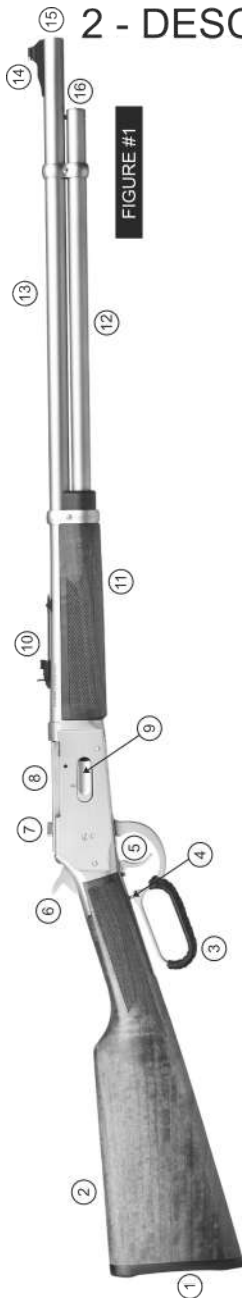


FIGURE #1

- | | |
|----------------------|-------------------|
| 1- RECOIL PAD | 9- MAGAZINE PORT |
| 2- STOCK | 10- REAR SIGHT |
| 3- LEVEL | 11- FOREND |
| 4- TRIGGER LOCK | 12- MAGAZINE TUBE |
| 5- TRIGGER | 13- BARREL |
| 6- HAMMER | 14- FRONT SIGHT |
| 7- FIRING PIN SAFETY | 15- MUZZLE |
| 8- BOLT | 16- MAGAZINE CAP |

REFER TO FIGURE-1 FOR GENERAL PART NAMES AND DESCRIPTIONS.

3 - AMMUNITION



THIS SHOTGUN IS CHAMBERED IN .410 BORE FOR USE OF 2½" SHELLS ONLY !



CHAMBERED FOR 2½" SHELLS ONLY !



NEVER ATTEMPT TO LOAD 3" SHELLS !



ONLY USE FACTORY-LOADED AMMUNITION THAT IS SUITABLE FOR USE IN A TUBULAR MAGAZINE !



NEVER USE NON-STANDARD, RELOADED, OR HAND-LOADED AMMUNITION.



NEVER USE SHELLS WITH PROTRUDING, POINTED OR CONICAL POINT SLUGS.



NEVER USE SHELLS WHICH HAS A SLUG PROTRUDING BEYOND ITS CRIMP.



WE DISCLAIM ANY RESPONSIBILITY FOR INCIDENTS THAT OCCUR THROUGH THE USE OF FAULTY, NON-STANDARD, NON-SUITABLE, RE-LOADED OR HAND-LOADED AMMUNITION

4 - OPERATING INSTRUCTIONS

4.1 – “SAFE” AND “FIRE” POSITIONS

THIS SHOTGUN HAS A 'FIRING PIN SAFETY':



IF THE 'FIRING PIN SAFETY' IS ON (SAFE POSITION), WHEN THE TRIGGER IS PULLED, THE COCKED HAMMER WILL STRIKE THE FIRING PIN BUT FIRING PIN WILL NOT STRIKE THE PRIMER, THUS CARTRIDGE WILL NOT BE FIRED.



IF THE 'FIRING PIN SAFETY' IS OFF (FIRE POSITION), WITH COCKED HAMMER, PULLING THE TRIGGER WILL FIRE THE CARTRIDGE !

THIS SHOTGUN'S HAMMER HAS A 'REST POSITION' THAT SERVES AS AN ADDITIONAL SAFETY FEATURE:



IF THE HAMMER IS IN REST (SAFE) POSITION, WHEN THE TRIGGER IS PULLED, THE HAMMER WILL NOT MOVE AND WILL NOT STRIKE THE FIRING PIN, THUS CARTRIDGE WILL NOT BE FIRED.



IF THE HAMMER IS IN COCKED (FIRE) POSITION, AND IF THE 'FIRING PIN SAFETY' IS OFF (FIRE POSITION), PULLING THE TRIGGER WILL FIRE THE CARTRIDGE !

LOWERING THE HAMMER TO 'REST POSITION':

HAMMER CAN BE COCKED ANY TIME, EITHER MANUALLY OR BY CYCLING THE LEVER. UNLESS SHOOTING IS IMMINENT, IT IS RECOMMENDED TO LOWER THE HAMMER IMMEDIATELY TO 'REST POSITION'.

TO DO THIS;

1-MAKE SURE THAT THE BARREL IS POINTED TO A SAFE DIRECTION.

2-GET A STABLE GRIP ON THE SHOTGUN, WITH YOUR HAND ON THE SHOTGUN IN SHOOTING POSITION.


3-PLACE YOUR THUMB ON THE HAMMER AND FIRMLY HOLD THE HAMMER BACK WITH YOUR THUMB.

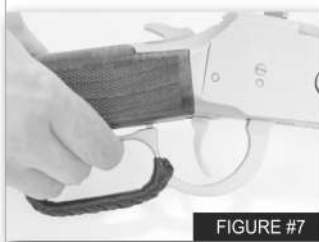
4-WHILE FIRMLY HOLDING THE HAMMER BACK WITH YOUR THUMB, PULL THE TRIGGER SLIGHTLY TO RELEASE THE HAMMER FROM COCKED POSITION.

5-IMMEDIATELY REMOVE YOUR FINGER FROM THE TRIGGER.

6-SLOWLY AND CAREFULLY ALLOW THE HAMMER TO LOWER TO 'REST POSITION'

7-BE EXTREMELY CAREFUL ! IF HAMMER SLIPS THROUGH YOUR THUMB CARTRIDGE CAN FIRE !

 THIS SHOTGUN HAS A 'TRIGGER STOP' MECHANISM. IT IS NECESSARY FOR THE LEVER TO PRESS THE 'TRIGGER STOP' OTHERWISE YOU WILL NOT BE ABLE TO PULL THE TRIGGER (FIGURE#6) (FIGURE#7)



4.2 - LOADING INSTRUCTIONS

LOADING THE CHAMBER:

THE CHAMBER CAN BE LOADED BY TWO WAYS;

1- BY PLACING THE SHELL DIRECTLY INTO THE CHAMBER MANUALLY, THROUGH THE OPENED ACTION. MAGAZINE SHOULD BE EMPTY WHILE DOING THIS !

YOU SHOULD INSERT THE CRIMP END OF THE SHELL PARTIALLY INTO THE CHAMBER BEFORE PULLING THE LEVER TO CLOSE THE ACTION. (FIGURE#8) (FIGURE#9)

2-BY TRANSFERRING A SHELL INTO THE CHAMBER (THAT WAS PREVIOUSLY LOADED INTO THE MAGAZINE) FROM THE MAGAZINE BY CYCLING THE LEVER.



ALWAYS MAKE SURE THAT SHELLS ARE OF PROPER GAUGE AND LENGTH, AS DESIGNATED ON THE BARREL !



FIGURE #8



FIGURE #9

LOADING THE MAGAZINE:

THE MAGAZINE IS LOADED THROUGH THE PORT LOCATED ON THE RIGHT SIDE OF THE RECEIVER.



ALWAYS MAKE SURE THAT SHELLS ARE OF PROPER GAUGE AND LENGTH, AS DESIGNATED ON THE BARREL !

1-MAKE SURE THAT THE BARREL IS POINTED TO A SAFE DIRECTION, HAMMER IS IN REST POSITION AND FIRING PIN SAFETY IS ON (SAFE POSITION).

2-SLOWLY AND CAREFULLY PUSH THE CRIMP END OF THE SHELL AGAINST THE LOADING PORT COVER TO MAKE IT OPEN AND THEN KEEP PUSHING THE SHELL UNTIL IT IS COMPLETELY INSIDE THE MAGAZINE TUBE. (FIGURE#10-11-12)

3-INSERT THE NEXT SHELL IN THE SAME MANNER, PUSHING DOWN THE COVER WITH THE SHELL, THEN PUSHING THE PRECEDING SHELL INTO THE MAGAZINE TUBE.



FIGURE #10



FIGURE #11



FIGURE #12

4-REPEAT THIS PROCEDURE UNTIL DESIRED NUMBER OF SHELLS ARE LOADED INTO THE MAGAZINE.

5-DO NOT FORCE AND TRY TO EXCEED THE RECOMMENDED MAGAZINE CAPACITY OF YOUR SHOTGUN.



A SHELL CAN BE LOADED MANUALLY INTO THE CHAMBER, BEFORE LOADING ANY SHELL INTO THE MAGAZINE.



DO NOT LOAD THE CHAMBER MANUALLY IF THERE IS ANY SHELL IN THE MAGAZINE !

4.3 - UNLOADING INSTRUCTIONS

1-MAKE SURE THAT THE BARREL IS POINTED TO A SAFE DIRECTION, AND FIRING PIN SAFETY IS ON (SAFE POSITION).

2-KEEPING YOUR FINGER OFF THE TRIGGER, PUSH THE LEVER DOWNWARD FULLY TO EXTRACT ANY SHELL IN THE CHAMBER AND EJECT IT. THEN PULL THE LEVER UPWARD FULLY.

3-REPEAT THIS PROCEDURE IN THE SAME MANNER, TRANSFERING ALL REMAINING SHELLS FROM THE MAGAZINE TO THE CHAMBER, THEN EJECTING THEM OUT. UNTIL SHELLS NO LONGER EJECT WHEN YOU CYCLE THE LEVER.

4-ALWAYS DOUBLE CHECK VISUALLY, THROUGH THE TOP OF THE OPEN RECEIVER, THAT THERE IS NO SHELL REMAINING IN THE CHAMBER NOR IN THE MAGAZINE.

4.4 - FIRING INSTRUCTIONS

1-MAKE SURE THAT THE BARREL IS POINTED TO A SAFE DIRECTION UNTIL SHOOTING IS IMMINENT.

2-LOAD THE CHAMBER (AND THE MAGAZINE IF DESIRED) AS INSTRUCTED IN 4.2 – LOADING INSTRUCTIONS

3-TURN THE FIRING PIN SAFETY TO OFF (FIRE) POSITION AS INSTRUCTED IN 4.1 – “SAFE” AND “FIRE” POSITIONS

4-(IF HAMMER IS NOT ALREADY COCKED) FIRMLY DRAW THE HAMMER BACK WITH YOUR THUMB TO COCKED POSITION



YOUR SHOTGUN IS NOW READY TO FIRE !

5-FIRMLY SHOULDER THE GUN, TAKE AIM, WHEN ON TARGET PULL THE TRIGGER TO FIRE !



BOLT MUST BE FULLY CLOSED BEFORE FIRING THIS SHOTGUN. IN ORDER TO ASSURE THAT, THIS SHOTGUN HAS A ‘TRIGGER STOP’ MECHANISM. IT IS NECESSARY FOR THE LEVER TO PRESS THE ‘TRIGGER STOP’ OTHERWISE YOU WILL NOT BE ABLE TO PULL THE TRIGGER TO FIRE THE SHOTGUN. GET YOUR GRIP ON THE STOCK AND THE LEVER ACCORDINGLY. (FIGURE #6-7)



TRIGGER STOP IS NOT A SAFETY. NEVER RELY ON THE TRIGGER STOP MECHANISM TO PREVENT ACCIDENTAL DISCHARGE

CHAMBERING NEXT ROUND FROM THE MAGAZINE (WHEN MAGAZINE IS ALREADY LOADED) FOR THE NEXT SHOT:

1-PUSH THE LEVER DOWNWARD FULLY TO EXTRACT AND EJECT THE FIRED SHELL CASE FROM THE CHAMBER.

2-CLOSE THE ACTION BY PULLING THE LEVER UPWARD FULLY TO TRANSFER A NEW SHELL FROM THE MAGAZINE INTO THE CHAMBER.

 3-HAMMER IS COCKED AND YOUR SHOTGUN IS NOW READY TO FIRE AGAIN ! PULL THE TRIGGER TO FIRE !

4-TO FIRE ADDITIONAL SHELLS FROM THE MAGAZINE, SIMPLY CYCLE THE LEVER (FULLY DOWNWARD-FULLY UPWARD) AND REPEAT THE FIRING SEQUENCE.

4.5 - SIGHT ADJUSTMENTS

YOUR SHOTGUN IS EQUIPPED WITH SIGHTS. THE STYLE AND ADJUSTMENT SYSTEM MAY VARY BETWEEN MODELS.

PROPER PROCEDURE IS TO SHOOT A GROUP OF SHOTS FROM ?25METERS?, WITH THE SIGHTS ON INTERMEDIATE POSITIONS ON ELEVATION AND WINDAGE (AS THEY COME FROM THE FACTORY), THEN MAKE YOUR PERSONAL INCREMENTAL ADJUSTMENTS BOTH ON ELEVATION AND WINDAGE TO GROUP YOUR SHOTS ON THE TARGET.

 MAKE SURE THAT THE SHOTGUN IS FULLY UNLOADED AND THERE ARE NO SHELLS IN THE CHAMBER NOR IN THE MAGAZINE, BEFORE MAKING ANY SIGHT ADJUSTMENTS

HIGH/LOW ELEVATION ADJUSTMENT

TO SHOOT HIGHER ON THE TARGET, YOU SHOULD RAISE THE REAR SIGHT. (IF YOUR SHOTS GROUP AT 6 O'CLOCK, YOU SHOULD RAISE THE REAR SIGHT TO GROUP THEM AT BULLSEYE)

TO SHOOT LOWER ON THE TARGET, YOU SHOULD LOWER THE REAR SIGHT. (IF YOUR SHOTS GROUP AT 12 O'CLOCK, YOU SHOULD LOWER THE REAR SIGHT TO GROUP THEM AT BULLSEYE)

MOVE THE NOTCHED ELEVATOR BACKWARD OR FORWARD TO RAISE OR LOWER THE REAR SIGHT. YOU MAY NEED TO LIFT UP THE REAR SIGHT BY THE EARS WITH YOUR FINGERS TEMPORARILY TO MOVE THE NOTCHED ELEVATOR BACKWARD OR FORWARD. MAY VARY ON YOUR MODEL. FIGURE#13-14

USE THE PROPER WRENCH OR SCREWDRIVER TO ADJUST THE SIGHTS AS INDICATED ON IT. MAY VARY ON YOUR MODEL. FIGURE#15





RIGHT/LEFT WINDAGE ADJUSTMENT

TO SHOOT RIGHT ON THE TARGET, YOU SHOULD MOVE THE REAR SIGHT TO THE RIGHT. (IF YOUR SHOTS GROUP AT 9 O'CLOCK, YOU SHOULD MOVE THE REAR SIGHT TO THE RIGHT TO GROUP THEM AT BULLSEYE)

TO SHOOT LEFT ON THE TARGET, YOU SHOULD MOVE THE REAR SIGHT TO THE LEFT. (IF YOUR SHOTS GROUP AT 3 O'CLOCK, YOU SHOULD MOVE THE REAR SIGHT TO THE LEFT TO GROUP THEM AT BULLSEYE)

THE REAR SIGHT SITS IN A DOVETAIL SLOT ON THE BARREL, FIXED WITH A SCREW. FIRST YOU SHOULD LOOSEN THIS SCREW PRIOR TO MAKING WINDAGE ADJUSTMENTS. USE A PLASTIC HAMMER OR A BRASS WEDGE TO TAP THE REAR SIGHT IN THE DIRECTION NECESSARY. MAY VARY ON YOUR MODEL. FIGURE#16

USE THE PROPER WRENCH OR SCREWDRIVER TO ADJUST THE SIGHTS AS INDICATED ON IT. MAY VARY ON YOUR MODEL. FIGURE#17

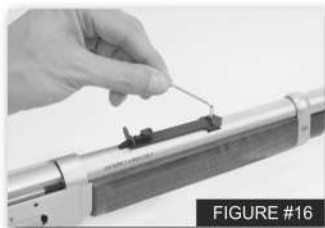



FIGURE #16



FIGURE #17

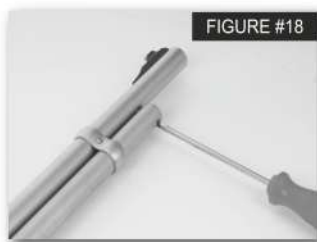
4.6 - MAGAZINE / MAGAZINE PLUG

YOUR SHOTGUN IS DELIVERED WITH A MAGAZINE PLUG, EITHER INSTALLED IN THE MAGAZINE OR INCLUDED IN THE BOX. THIS PLUG REDUCES MAGAZINE TUBE'S CAPACITY TO 2(TWO) SHELLS. YOU CAN REMOVE OR INSTALL THIS PLUG ANY TIME YOU WANT.

 MAKE SURE THAT THE SHOTGUN IS FULLY UNLOADED AND THERE ARE NO SHELLS IN THE CHAMBER NOR IN THE MAGAZINE, BEFORE REMOVING OR INSTALLING THE MAGAZINE PLUG

MAKE SURE THAT THE BARREL AND THE MAGAZINE TUBE ARE POINTED TO A SAFE DIRECTION AT ALL TIMES

MAKE SURE TO WEAR EYE PROTECTION WHILE REMOVING OR INSTALLING THE MAGAZINE PLUG. REMEMBER, THE MAGAZINE CAP (AND THE MAGAZINE PLUG) IS UNDER SPRING PRESSURE, AND MAGAZINE SPRING CAN POP OUT OF THE MAGAZINE TUBE WHEN MAGAZINE CAP IS REMOVED.



INSTALLING THE MAGAZINE PLUG

1-MAKE SURE THAT THE SHOTGUN IS FULLY UNLOADED AND THERE ARE NO SHELLS IN THE CHAMBER NOR IN THE MAGAZINE

2-LOOSEN AND REMOVE THE MAGAZINE CAP RETAINING SCREW LOCATED UNDERSIDE THE MUZZLE END OF THE MAGAZINE TUBE. FIGURE#18

3-CAREFULLY REMOVE THE MAGAZINE CAP FROM THE MAGAZINE TUBE. REMEMBER, THE MAGAZINE CAP IS UNDER SPRING PRESSURE, AND MAGAZINE SPRING CAN POP OUT OF THE MAGAZINE TUBE WHEN MAGAZINE CAP IS REMOVED.



5-SCREW IN THE THREADED TIP OF THE MAGAZINE PLUG INTO THE THREADED HOLE ON THE MAGAZINE CAP WITH YOUR FINGERS. FIGURE #19-20

6-REPLACE THE MAGAZINE CAP (WITH MAGAZINE PLUG INSTALLED ON IT), ALSO PUSHING DOWN THE MAGAZINE SPRING, BACK INTO THE MAGAZINE TUBE.

7-REPLACE THE MAGAZINE CAP RETAINING SCREW AND TIGHTEN IT.

REMOVING THE MAGAZINE PLUG

1- MAKE SURE THAT THE SHOTGUN IS FULLY UNLOADED AND THERE ARE NO SHELLS IN THE CHAMBER NOR IN THE MAGAZINE

2-LOOSEN AND REMOVE THE MAGAZINE CAP RETAINING SCREW LOCATED UNDERSIDE THE MUZZLE END OF THE MAGAZINE TUBE.

3-CAREFULLY REMOVE THE MAGAZINE CAP FROM THE MAGAZINE TUBE. REMEMBER, THE MAGAZINE CAP IS UNDER SPRING PRESSURE. AND MAGAZINE SPRING CAN POP OUT OF THE MAGAZINE TUBE WHEN MAGAZINE CAP IS REMOVED.

4-SCREW OUT THE MAGAZINE PLUG FROM THE MAGAZINE CAP WITH YOUR FINGERS. FIGURE #19-20

5-REPLACE THE MAGAZINE CAP, ALSO PUSHING DOWN THE MAGAZINE SPRING, BACK INTO THE MAGAZINE TUBE.

6-REPLACE THE MAGAZINE CAP RETAINING SCREW AND TIGHTEN IT.

4.7 - CHOKE / CHOKE TUBES

YOUR SHOTGUN IS EQUIPPED WITH A THREADED CHOKE TUBE SYSTEM AND USES THE BERETTA BENELLI MOBIL® TYPE THREADS AND CHOKE TUBES.

USE ONLY THE APPROPRIATE GAUGE AND TYPE OF CHOKE TUBES ON YOUR SHOTGUN



NEVER FIRE A SHOTGUN WITHOUT CHOKE TUBES PROPERLY INSTALLED ON ITS BARREL. OTHERWISE PERMANENT DAMAGE WILL RESULT ON CHOKE TUBE THREADS OF THE BARREL

PERIODICALLY REMOVE AND CLEAN THE CHOKE TUBES AND THE CHOKE THREADS IN THE BARREL

PERIODICALLY CHECK TO ASSURE THAT CHOKE TUBE IS TIGHT AND FIRMLY SEATED



MAKE SURE THAT THE SHOTGUN IS FULLY UNLOADED AND THERE ARE NO SHELLS IN THE CHAMBER NOR IN THE MAGAZINE. BEFORE REMOVING OR INSTALLING A CHOKE TUBE. NEVER ATTEMPT TO REMOVE OR INSTALL A CHOKE TUBE ON A LOADED FIREARM.

REMOVING THE CHOKE TUBES

1-MAKE SURE THAT THE SHOTGUN IS FULLY UNLOADED AND THERE ARE NO SHELLS IN THE CHAMBER NOR IN THE MAGAZINE

2-USE THE CHOKE TUBE WRENCH SUPPLIED. ALIGN STEPPED END OF THE WRENCH WITH SLOTS IN THE CHOKE TUBE THEN PUSH THE WRENCH INTO THE CHOKE TUBE.

3-TURN THE WRENCH COUNTER-CLOCKWISE TO LOOSEN THE CHOKE TUBE. THEN UNSCREW WITH YOUR FINGERS TO REMOVE IT COMPLETELY OUT OF THE BARREL.

INSTALLING THE CHOKE TUBES

1-MAKE SURE THAT THE SHOTGUN IS FULLY UNLOADED AND THERE ARE NO SHELLS IN THE CHAMBER NOR IN THE MAGAZINE

2-BEFORE INSTALLING A CHOKE TUBE, CHECK INTERNAL THREADS IN THE BARREL, AS WELL AS THE THREADS ON THE CHOKE TUBE, AND MAKE SURE THAT THEY ARE CLEAN AND UNDEFORMED. DO NOT USE BENT OR DEFORMED CHOKE TUBES/BARREL THREADS, THIS MAY RESULT IN DAMAGE OR INJURY.

3-LIGHTLY OIL THE THREADS, BOTH ON THE CHOKE TUBE AND THE BARREL, WITH QUALITY GUN OIL.

4-USE YOUR HAND TO PLACE THE CHOKE TUBE INTO THE BARREL MUZZLE. FIT CORRESPONDING THREADS AND SCREW CLOCKWISE WITH YOUR FINGERS.

5-USE THE CHOKE TUBE WRENCH SUPPLIED. ALIGN STEPPED END OF THE WRENCH WITH SLOTS IN THE CHOKE TUBE THEN PUSH THE WRENCH INTO THE CHOKE TUBE.

6-TURN THE WRENCH CLOCKWISE TO TIGHTEN THE CHOKE TUBE. DO NOT OVER TIGHTEN

7-FLUSH FITTING CHOKE TUBES SHOULD FIT FLUSH WITH THE BARREL WHEN PROPERLY INSTALLED.



SHOOT SLUGS AND SINGLE BULLETS ONLY WITH CYLINDER***** CHOKE TUBES



SHOOT STEEL SHOTS ONLY WITH CYLINDER***** OR IMPROVED CYLINDER***** CHOKE TUBES

5 - CLEANING AND MAINTENANCE INSTRUCTIONS

INITIAL CLEANING

BEFORE FIRING YOUR SHOTGUN, MAKE SURE THAT BARREL, RECEIVER, SHELL FEED MECHANISM, LEVER MECHANISM, ACTION/CHAMBER AREAS ARE CLEAN AND FREE OF ANY OBSTRUCTIONS OR EXCESS OIL.

CLEAN AND LIGHTLY OIL SPECIFIED PARTS/AREAS AS EXPLAINED UNDER "CLEANING AND MAINTENANCE SUGGESTIONS" BEFORE FIRING YOUR SHOTGUN.

MAKE SURE THAT THE SHOTGUN IS FULLY UNLOADED AND THERE ARE NO SHELLS IN THE CHAMBER NOR IN THE MAGAZINE, BEFORE CLEANING OR OILING YOUR SHOTGUN

CLEANING AND MAINTENANCE SUGGESTIONS

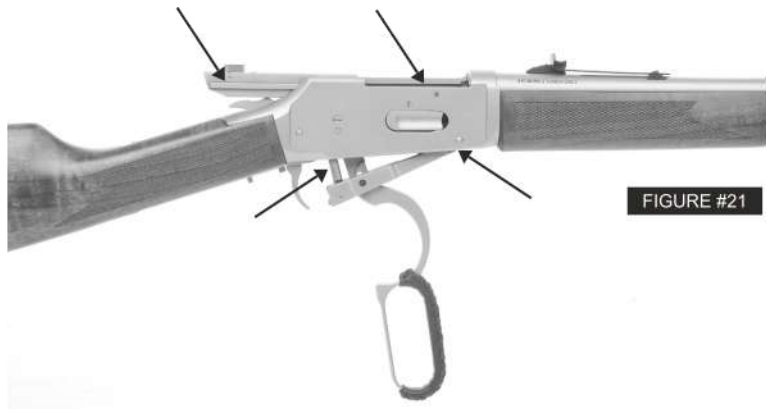
1-MAKE SURE THAT THE SHOTGUN IS FULLY UNLOADED AND THERE ARE NO SHELLS IN THE CHAMBER NOR IN THE MAGAZINE.

2-CLEAN THE CHAMBER AND THE BARREL USING A CLEANING ROD AND A PATCH. MAKE SURE THAT PATCH IS LARGE ENOUGH TO SNUG FIT INTO THE BARREL. OPEN THE ACTION BY PUSHING THE LEVER, RUN THE CLEANING ROD AND PATCH, FROM THE BREECH SIDE TOWARDS THE MUZZLE. REPEAT THIS PROCEDURE SEVERAL TIMES UNTIL CHAMBER AND BARREL ARE FREE OF LEAD OR POWDER RESIDUES. IF NECESSARY, SPRAY SOLVENT TO THE PATCH OR USE A BRASS BRUSH.

3-AFTER CHAMBER AND BARREL ARE CLEANED AND FREE OF ANY RESIDUES, WIPE THEM DRY. THEN PASS A SLIGHTLY OILED PATCH THROUGH THE CHAMBER AND THE BARREL BORE FOR PRESERVATION. A FINE LIGHT GUN OIL IS RECOMMENDED.

4-OPEN THE ACTION BY PUSHING THE LEVER AND WIPE TO CLEAN ALL EXPOSED METAL SURFACES; RECEIVER AND BOLT (AND THEIR RAIL SURFACES), LEVER MECHANISM COMPONENTS, SHELL FEED MECHANISM COMPONENTS.

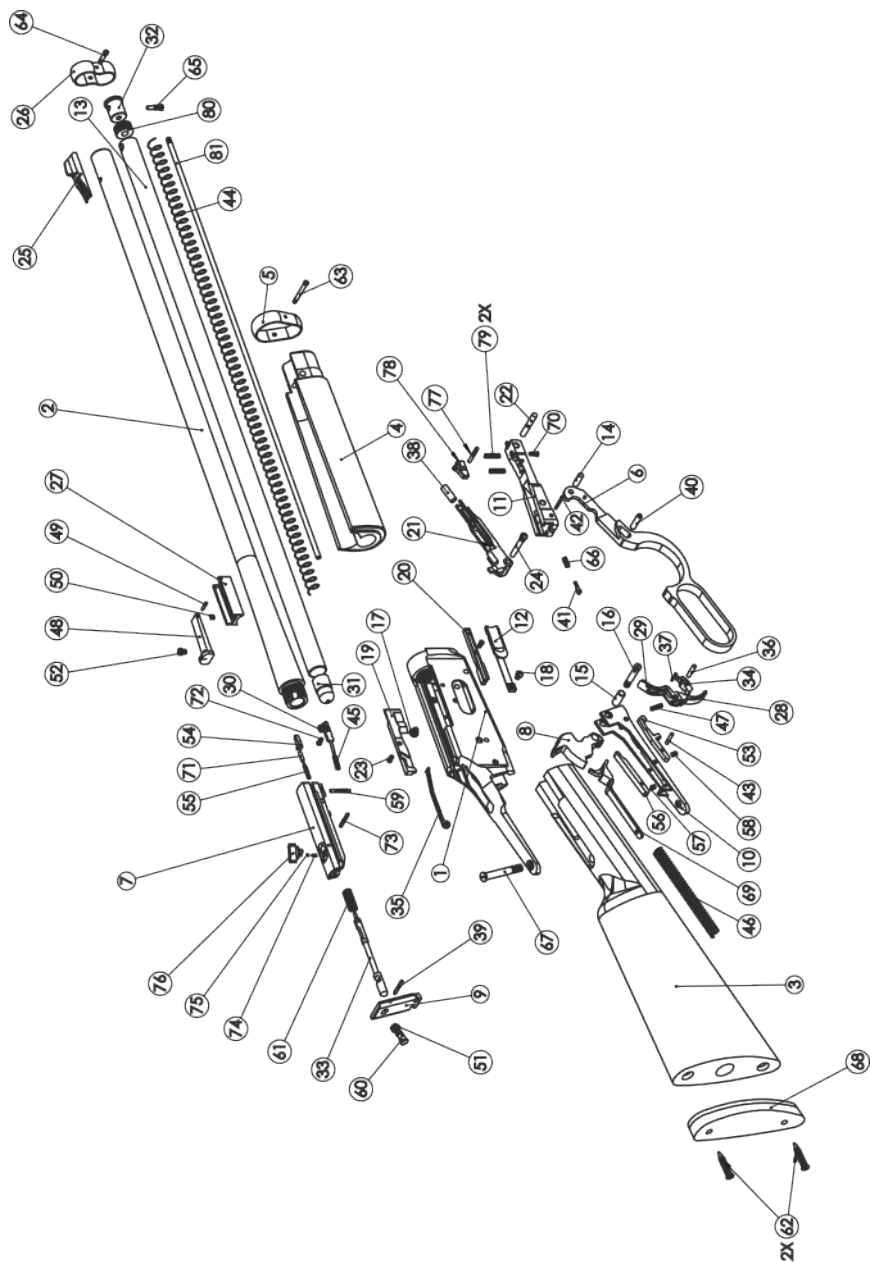
5-AFTER EXPOSED METAL SURFACES (RECEIVER, BOLT, LEVER AND FEED MECHANISM COMPONENTS) ARE CLEANED AND FREE OF ANY RESIDUES, LIGHTLY OIL THE POINTS SHOWN BELOW. (FIGURE #21) REMEMBER, FINELY FITTED SURFACES OF THE RECEIVER, BOLT, AND ACTION MECHANISM SHOULD ALWAYS HAVE A THIN FILM OF OIL.



NO DISASSEMBLY IS NEEDED FOR REGULAR CLEANING AND MAINTENANCE. IF YOUR SHOTGUN REQUIRES DISASSEMBLY FOR ANY REASON, IT SHOULD BE PERFORMED BY A COMPETENT GUNSMITH !



DO NOT ATTEMPT TO TAKE YOUR SHOTGUN APART FURTHER THAN EXPLAINED IN THIS MANUAL !



PART NO#	PART NAME	PART NO#	PART NAME
1	RECEIVER	41	BOTTOM PLATE DETENT
2	BARREL	42	TRIGGER STOP PIN
3	STOCK	43	MAGAZINE SPRING
4	FOREND	44	EJECTOR SPRING
5	FOREND BAND	45	HAMMER SPRING
6	LEVER	46	TRIGGER SPRING
7	BOLT	47	REAR SIGHT
8	HAMMER	48	REAR SIGHT PIVOT PIN
9	LOCKING BLOCK	49	REAR SIGHT SPRING
10	LOWER TANG	50	STRIKER SPRING
11	BOTTOM PLATE	51	REAR SIGHT SCREW
12	LOADING GATE	52	TRIGGER STOP
13	MAGAZINE TUBE	53	EXTRACTOR
14	LEVER PIN	54	EXTRACTOR SPRING
15	HAMMER BUSHING	55	TRIGGER PRESS
16	HAMMER SCREW	56	TRIGGER PRESS PIN
17	BOLT PIN REMOVAL HOLE SCREW	57	TRIGGER STOP SPRING
18	LOADING GATE SCREW	58	EXTRACTOR PIN
19	LEFT CARTRIDGE GUIDE	59	STRIKER
20	RIGHT CARTRIDGE GUIDE	60	FIRING PIN SPRING
21	ELEVATOR	61	RECOIL PAD SCREW
22	BOTTOM PLATE PIN	62	FOREND BAND SCREW
23	CARTRIDGE GUIDE SCREW	63	MAGAZINE TUBE BAND SCREW
24	ELEVATOR SCREW	64	MAGAZINE CAP SCREW
25	FRONT SIGHT	65	BOTTOM PLATE DETENT SPRING
26	MAGAZINE TUBE BAND	66	UPPER TANG SCREW
27	REAR SIGHT BASE	67	RECOIL PAD
28	TRIGGER	68	HAMMER SPRING GUIDE
29	TRIGGER CONNECTOR	69	BOTTOM PLATE SCREW
30	EJECTOR	70	EXTRACTOR SPRING PIN
31	MAGAZINE FOLLOWER	71	EJECTOR SCREW
32	MAGAZINE CAP	72	FIRING PIN RETAINING PIN
33	FIRING PIN	73	FIRING PIN SAFETY SPRING
34	SEAR	74	FIRING PIN SAFETY DETENT
35	ELEVATOR SPRING	75	FIRING PIN SAFETY SWITCH
36	TRIGGER PIN	76	SHELL LATCH SCREW
37	TRIGGER CONNECTOR PIN	77	SHELL LATCH
38	ELEVATOR MAGNET	78	MAGAZINE SPRING STOPPER
39	STRIKER RETAINING PIN	79	MAGAZINE PLUG
40	BOTTOM PLATE-LEVER CONNECTION PIN	80	
		81	



Eternal Arms İnşaat Silah San. İç ve Dış Tic. Ltd. Şti.

☎ +90 542 530 53 01

📍 Hacıakif Mahallesi Özdilek Caddesi No.86/B Beyşehir - Konya / TURKEY

🌐 www.eternalarms.com.tr ✉ export@eternalarms.com.tr

📱 Eternal Arms 📺 [eternal_arms](https://www.instagram.com/eternal_arms)