



SPECTACULAR XL

SEMI-AUTO SHOTGUN INSTRUCTION MANUAL

Read the instructions and warnings in this manual carefully before using these firearms

Congratulations and thank you for choosing our shotgun.

WARNING!

Read this instruction manual carefully before handling this firearm. Incorrect handling may result in serious injury or death to you or bystanders.

Always keep this manual with your firearm. Ensure that you fully comprehend all the operational instructions, safety procedures, and warnings provided in this manual before handling the firearm. If you sell, lend, or give the firearm to someone else, make sure to include this manual with it.

WARNING!

Always keep your finger outside the trigger guard and ensure that the safety is fully engaged until you are ready to fire. The safety is fully engaged only when its red color is completely covered, and it can no longer be moved toward the 'on' position.

SAFETY RULES

- Always point the firearm in a safe direction, even when it's unloaded. Do not aim the firearm at anything you don't intend to shoot. Avoid any horseplay when handling a firearm.
- Keep your finger away from the trigger when operating any other part of the firearm's mechanism.
- Keep the safety 'ON' until you are ready to fire. Treat every firearm with respect and exercise caution.
- Keep your fingers away from the muzzle. Never pull a firearm toward you by the muzzle.
- Ensure the barrel is clear of obstructions.
- Keep your firearm unloaded when not in use, and never load your firearm unless you intend to shoot.
- Always aim at a safe target, ensuring it doesn't conceal other objects. Be certain of your target and what lies beyond before pulling the trigger.

- Never fire at sounds. To avoid ricochets, avoid shooting at flat, hard surfaces or water.
- Store firearms and ammunition separately, out of children's reach, preferably under lock and key. Always store firearms unloaded.
- Never carry a loaded firearm inside a vehicle, house, camp, or public area. When transporting the firearm, keep it in the "on safe" position and unloaded. Never climb a tree, fence, or jump a ditch with a loaded firearm.
- Don't rely on someone's word that the firearm is "on safe" or unloaded. Always confirm that the firearm is "on safe" and unloaded when receiving it from another person or storage.
- Avoid consuming alcoholic beverages or drugs before or during shooting.
- Always use eye and hearing protection, and ensure that bystanders are similarly protected.
- Although the firearm itself doesn't contain lead, it fires ammunition containing lead or lead compounds, which can be hazardous to health. When shooting or cleaning firearms, take appropriate health precautions. Avoid lead exposure while handling and wash your hands after contact. Adequate air ventilation is essential when shooting indoors.
- Any damage, malfunction, injury, or death resulting from the use of faulty, incorrect, non-standard, remanufactured, hand-loaded, or reloaded ammunition is the sole responsibility of the user.
- The user is solely responsible for any damage, injuries, or deaths resulting from carelessness or misuse of the firearm.

ASSEMBLY

In the packing, the firearm is divided into two parts: Receiver and barrel group.

(FIGURE 1)



Figure 1

TRIGGER SAFETY

Before loading your firearm, ensure that the safety is engaged. The safety button is located behind the trigger on the trigger housing. When the red color on its left side is visible, it means that the safety button is disengaged, and the firearm is ready to fire.

To engage the safety button, push it fully to the right until its red color disappears, and it cannot move any further. The "SAFETY ON" is now active, blocking the trigger from being pulled. To disengage the safety, push the button fully to the left, exposing its red color. The trigger can now be pulled (**FIGURE 2**)

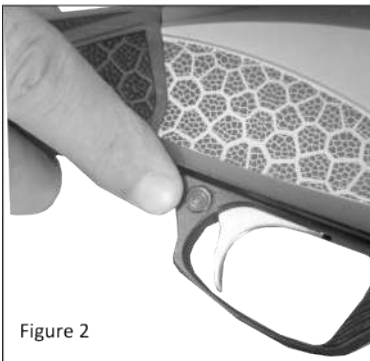


Figure 2

WARNING!

When the safety button is entirely black, it indicates that the safety is 'ON,' meaning the firearm is safe. When the safety button shows a red color, it means the safety is 'OFF,' and the firearm is ready to fire.

ASSEMBLY OF FIREARM

- Disassemble the connection nut, and take off the connection nut cap. (FIGURE 3)



- Disassemble the mag connection wedge and take off the fore-end. (FIGURE 4)



- After assembling the fore-end and the mag connection wedge, install the barrel. (**FIGURE 5**)



- Assemble the fore-end and barrel. (**FIGURE 6**)



- Attach the receiver to the barrel and fore-end you assembled. (**FIGURE 7**)



- Install the connection nut cap and then connection nut. (**FIGURE 8**)

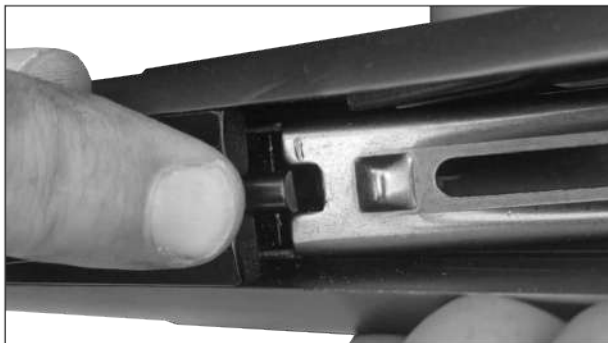




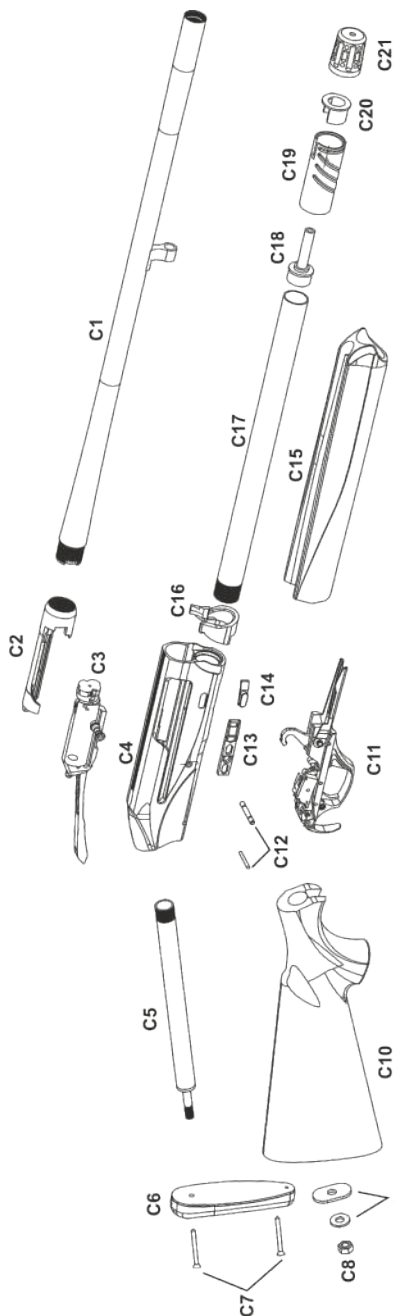
LOADING

You can load your firearm using the following steps:

- Ensure the safety is in the "on" or "safe" position (see page 4).
- Pull the bolt rearward until it locks in the open position.
- Load shells into the magazine by inserting them through the loading port on the bottom of the receiver and pushing them into the magazine.
- Push back the magazine shell latch on the rear side of the carrier.
- This action allows the shell to exit the magazine and move onto the carrier.
- Release the bolt by pressing the button located on the bottom of the receiver. This chambers a round, and the firearm will fire if the trigger is pulled with the safety in the "off" position



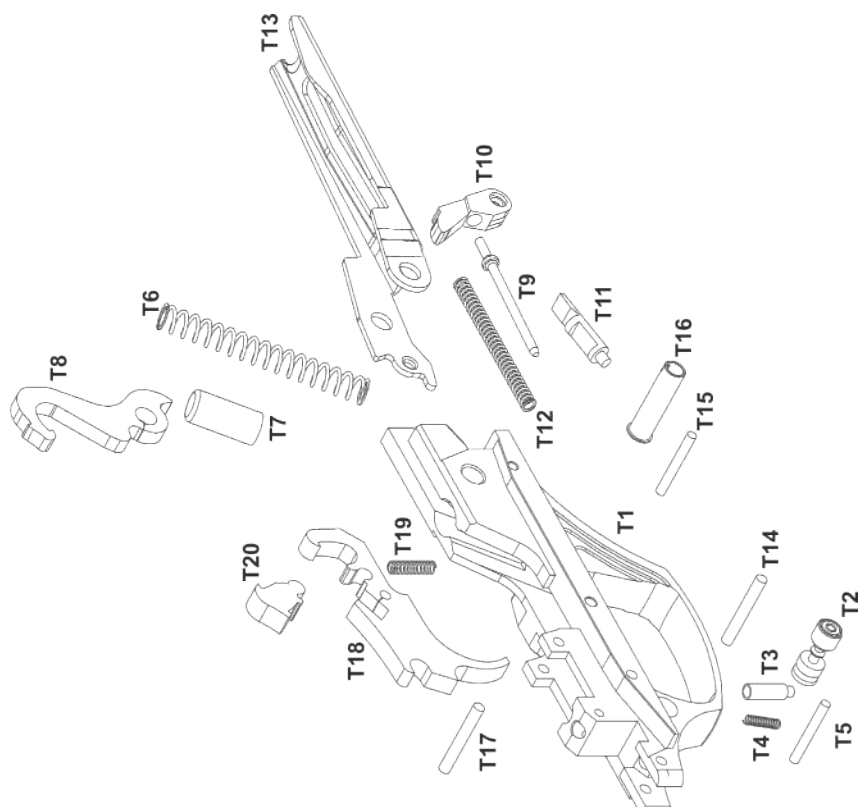
GENERAL ASSEMBLY C00



GENERAL ASSEMBLY-C00

- C1 BARREL
- C2 CAP
- C3 BOLT GROUP
- C4 RECEIVER
- C5 ACTION PIPE
- C6 RECOIL PAD
- C7 RECOIL PAD SCREW
- C8 STOCK CONNECTION SCREW
- C9 STOCK CONNECTION WASHER
- C10 STOCK
- C11 TRIGGER GROUP
- C12 TRIGGER CONNECTOR PIN
- C13 CARRIER LATCH
- C14 CARTRIDGE STOPPER
- C15 FORE-END
- C16 CONNECTION PART
- C17 MAGAZINE TUBE
- C18 MAGAZINE UPPER ROD
- C19 MAGAZINE CONNECTION WEDGE
- C20 WEDGE CAP
- C21 CONNECTION NUT

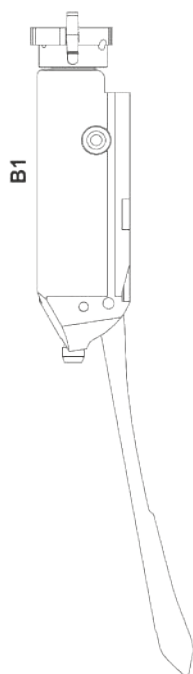
TRIGGER GROUP ASSEMBLY T00



TRIGGER GROUP ASSEMBLY-T00

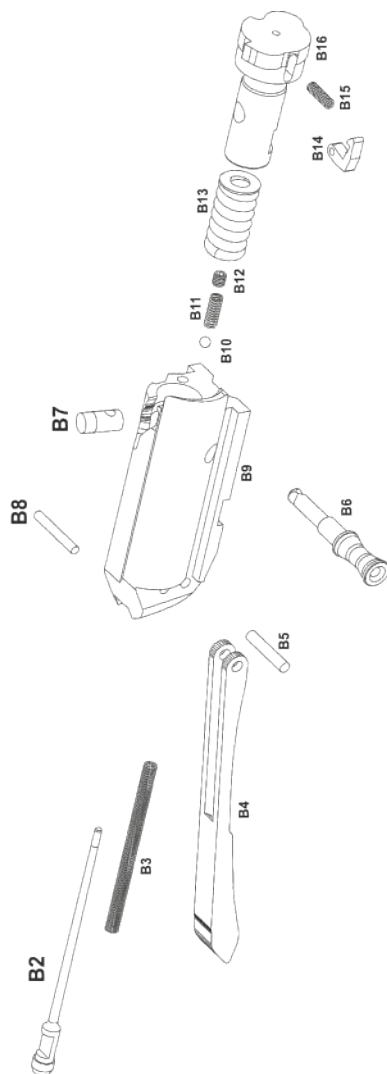
T1	TRIGGER GUARD	T11	CARTRIDGE DROPPER
T2	SAFETY	T12	CARRIER SPRING
T3	SAFETY SPRING PIN	T13	CARRIER
T4	SAFETY SPRING	T14	TRIGGER PIN
T5	SAFETY PIN	T15	TRIGGER PIN
T6	HAMMER SPRING	T16	RECEIVER CASE
T7	HAMMER SPRING TUBE	T17	SAFETY PIN
T8	HAMMER	T18	TRIGGER
T9	CARRIER LATCH PIN	T19	TRIGGER SPRING
T10	CARRIER LATCH	T20	INTERNAL TRIGGER

BOLT GROUP ASSEMBLY B00



BOLT GROUP ASSEMBLY-B00

- B1 BOLT GROUP
- B2 FIRING PIN
- B3 FIRING PIN SPRING
- B4 ACTION BAR
- B5 ACTION BAR PIN
- B6 BOLT HANDLE
- B7 ROTATING HEAD PIN
- B8 BOLT PIN



- B9 BOLT
- B10 BOLT HANDLE PIN
- B11 BOLT HANDLE SPRING
- B12 BOLT HANDLE RETAINING PIN
- B13 ROTATING HEAD SPRING
- B14 EXTRACTOR
- B15 EXTRACTOR SPRING
- B16 ROTATING HEAD SPRING

DISASSEMBLY OF FIREARM

- Loosen the connection nut and take out the connection nut cap.
- Disassemble the mag connection wedge and then take out the barrel and fore-end.
- Take out the receiver.







MOUNTING THE TRIGGER GROUP

To reinstall the trigger group after cleaning and lubricating, push the trigger group in the direction of the stock while aligning the holes in the receiver and the trigger group to accommodate the trigger group pin.

USAGE OF CHOKE TUBES

(If your firearm includes)

The choke is responsible for controlling the width or tightness of the pattern of your firearm. Refer to the chart below, which lists the available chokes (ranging from wide to tight), along with the corresponding markings specific to your firearm.

	SKEET	IC	M	IM	F	XF
CHOKE TUBE						
BBLS	CL	*****	***	**	*	XF

Never fire or run gun cleaning tools through a barrel that uses choke tubes without having a choke tube installed.

The threads of the choke tube and the internal threads of the barrel should be cleaned after each use and before installation of the tube.

To install a tube, insert it into the barrel and tighten it with your fingers.

Once the tube is finger-tightened, use the appropriate choke-tube wrench to snugly tighten it. DO NOT over-tighten or forcefully tighten with the wrench.

MAINTENANCE AND CLEANING

Caution: Make sure the gun is unloaded.

1. Ensure that the broad, polished, finely fitted mating surfaces of the Breech block and receiver are thoroughly clean and lightly oiled with a high-quality gun oil. Avoid using pure silicone or lanolin.
2. To clean the bore, run an oiled patch through the barrel using a cleaning rod, starting from the breech end. To prevent leading, periodically clean the bore with a cleaning solvent and a brass brush. Follow this cleaning with one or two clean oil patches. Note: If your gun is equipped with choke tubes, avoid using a brass brush to clean the barrels unless a choke tube is installed in each barrel. Barrels with choke tubes must have the choke tubes removed for cleaning and oiling the threads inside the barrel and the choke tubes themselves. This prevents thread damage from cleaning tools and prevents dirt buildup that might make it difficult to remove the choke tube. Always ensure choke tubes are securely tightened in the barrels before firing, but do not over-tighten them. Wipe all exposed metal surfaces with an oiled cloth before storing. Do not pour oil into the inner mechanism, as it may impede proper functioning and soak the wood. After extended periods of heavy use, it's advisable to take your gun to a qualified gunsmith for professional cleaning and lubrication.
3. Care for your wood stock and forearm as you would for a piece of furniture with a similar finish.

STORAGE

- Clean your gun thoroughly and apply oil before storing.
- Store the gun in a case to prevent scratches and dents.
- Keep it in a dry place to prevent corrosion; humidity can cause both visual and functional damage.
- Store the gun away from children and in a place where unauthorized users cannot access it.
- Always store the gun unloaded and separately from any ammunition.

IMPORTANT USAGE OF STEEL SHOT

The choke (bore constriction) in modern firearms is determined based on the pattern performance of shot shells loaded with lead shot. However, when using steel shot shells, you will notice differences in pattern density compared to the established lead shot pattern. This is because steel shot is harder and lighter than lead shot.

It's important to be aware of the following differences and cautions:

Never shoot steel shot loads in a full-choked barrel or a barrel with full choke tubes. Doing so may cause the barrel to swell or rupture.

Generally, steel shot fired with a modified choke will produce a pattern equivalent to a lead full choke pattern. This applies to all steel shot sizes up to and including size no 2.

Established improved cylinder chokes will produce patterns equivalent to a modified (lead) choke pattern.

Steel shot sizes larger than no 2, including special sizes such as -F-, "T," etc., should only be used with improved cylinder chokes. When used in improved cylinder chokes, these steel shot sizes will produce patterns equivalent to full choke patterns in lead.

The established cylinder choke or bore will produce patterns equivalent to a modified (lead) pattern.

For additional information about using steel shot, you can consult ammunition companies.

PARTS

To order parts, please provide the following information: Your name, address, telephone number, firearm serial number, as well as the manufacturer and model of the firearm. Upon receiving your request, we will send you an order form along with a parts breakdown that includes prices.

MANUFACTURER'S RECOMMENDATION

When using light loads of 7/8 oz. or 1 oz., keep in mind that these are primarily designed for target shooting and are often used in single-shot and over/under firearms. The backpressure generated by these loads can vary due to factors such as lead weight and smokeless powder used by manufacturers. In some cases, lighter loads may not function as effectively in semi-automatic firearms, especially those with shorter barrels, compared to standard 12-gauge loads of 1-1/8 oz. or more.

If you prefer to use 7/8 or 1 oz. loads, it's advisable to follow a breaking-in procedure by using loads of 1-3/4 oz. Steady use and proper maintenance, including lubrication, can 'loosen' the mechanism, allowing for a wider range of ammunition compatibility.

INSTALLATION OF MAGAZINE PLUG

Some federal, state, and local hunting regulations may require that a firearm be limited to a maximum shell capacity of three (3) rounds.

Installation:

1. Begin by removing the forend screw cap, the forend, and the barrel.
2. Locate the black snap ring at the threaded end of the magazine tube (where the forend screw cap fits).
3. To remove the snap ring, use a large-blade screwdriver. Exercise caution while removing the snap ring to prevent it from flying out and causing injury, especially to the eye.
4. Compress the magazine spring into the magazine tube and insert the magazine plug (small end first). Push the magazine plug in and insert the snap ring so that the snap ring end is flush with the end of the tube.



Eternal Arms İnşaat Silah San. İç ve Dış Tic. Ltd. Şti.

☎ +90 542 530 53 01

📍 Hacıakıf Mahallesi Özdilek Caddesi No.86/B Beyşehir - Konya / TURKEY

🌐 www.eternalarms.com.tr ✉ export@eternalarms.com.tr

📘 Eternal Arms 📱 [eternal_arms](https://www.instagram.com/eternal_arms)