

OWNER'S MANUAL



SURVIVOR

Congratulations on your purchase of the Survivor Shotgun. With proper care and handling, it will give you many years of long, reliable service. This shotgun is chambered for .410 shells only. Never fire 45 Colt, 454 Casull or any other metallic cartridge in this shotgun.

We specifically disclaim any responsibility for damage or injury whatsoever, occurring as a result of the use of faulty, non-standard or remanufactured ammunition, any modifications or changes made to the firearm; improper use or unsafe handling of the firearm.

Always keep this manual with your firearm. Make sure you understand all the warnings, operation instructions and safety procedures. When you lend, give or sell the firearm, be sure this manual goes with it. You can get a copy of this manual from us on request.

**FIREARMS SAFETY IS THE SOLE RESPONSIBILITY OF THE SHOOTER.
ALWAYS TREAT ALL FIREARMS AS IF THEY WERE LOADED AT ALL
TIMES!**



IMPORTANT!

**READ ALL INSTRUCTIONS AND WARNINGS IN
THIS BOOKLET BEFORE USING THIS FIREARM.**



IMPORTANT SAFETY MESSAGE

Children are attracted to and can operate firearms which can cause severe injuries or death. Prevent child access by always keeping gun locked, unloaded and separated from ammunition when not in use. If you keep a loaded firearm where a child obtains and improperly uses it, you may be fined or sent to prison.

Firearm Safety Depends on You

A gun is only as safe as the person operating it. You can never be overly careful when handling a firearm. Carelessness is often the cause of shooting accidents, such as failing to keep the muzzle pointed in a safe direction, not being sure of your target and what is behind it, failing to properly engage the safety, leaving ammunition in the chamber or using improper loads. Since a bullet can never be called back once fired, such errors in gun handling can result in the loss of life, severe injury or property damage thus, it is crucial for your safety and the safety of those around you that you learn the principles of safe gun handling and storage before you begin to use your new firearm. Be a safe shooter - please read this instruction book thoroughly even if this is not your first firearm purchase as not all firearms are the same. The first step in being a safe shooter is to learn the rules for the safe operation and handling of firearms. **There is nothing more important in gun handling than safety.**

Alcohol, Drugs and Guns Don't Mix. Make No Mistake About It!

Never handle firearms after consuming alcohol or taking drugs that can affect your judgment. Shoot sober! Alcohol, certain kinds of drugs and firearms don't mix. Safe firearms handling requires alertness and concentration on one's actions. You cannot handle a firearm safely after consuming alcohol. Never consume anything that can impair your judgment or physical coordination when handling a firearm. Never allow yourself to be distracted while handling a firearm.

THE TEN COMMANDMENTS OF FIREARM SAFETY

The Ten Commandments of Firearm Safety must be etched into your memory before you begin to handle firearms. These rules are intended to be understood and followed by all persons handling firearms in the field, on the range or at home. Please read, review and understand these rules before you begin to use or even take your new firearm out of its box. Remember, firearms safety depends on you! Memorizing these safety rules will help prevent gun accidents. Please study these safety rules before handling your firearm.

Commandment #1



Always Keep the Muzzle Pointed in a Safe Direction

This is the most basic and most important safety rule. A safe direction is one in which an accidental discharge will not cause injury to yourself, to others or property damage. This is particularly important when loading or unloading your firearm. Never point your gun at anything you do not intend to shoot. Treat every gun as if it were loaded at all times.

Commandment #2



Firearms Should Be Unloaded When Not Actually in Use

Firearms should only be loaded when you are in the field or on the target range or shooting area, ready to shoot. When not in use, firearms and ammunition should be secured in a safe place, separate from each other. Remember to unload your firearm completely so that there is no ammunition in the chamber or magazine. Before handling this or any firearm, or handing it to someone else,

visually check the chamber and magazine to ensure they do not contain ammunition. Always keep the gun's action open when not in use. Never assume a gun is unloaded - even if you were the last person to use it. Never cross a fence, climb a tree, wade through a stream or perform any awkward movement with a loaded gun. Never lean or place a firearm where it could fall. When in doubt, unload your gun! Never pull or push a loaded firearm toward yourself or another person. Never carry a loaded gun in a scabbard, a holster not being worn or a gun case - common sense prevails in gun safety!

Commandment #3

Don't Completely Rely on Your Gun's Safety

Treat every gun as though it could fire at any time, even if you are not applying pressure to the trigger. The "safety" on a firearm is a mechanical device which, like any such device, can become inoperable at the worst possible time and fail to function. By mistake, you may think the safety is "ON" when it actually is not. Or you may think your gun is unloaded when there is actually a round of ammunition in it. The safety serves as a supplement to proper gun handling but cannot serve as a substitute for common sense. Never handle a gun carelessly and assume that the gun won't fire just because "the safety is on." Never touch the firearm's trigger until you are ready to shoot. Keep your fingers away from the trigger when loading or unloading. Never pull the trigger when the safety is engaged or when the safety is positioned between the "SAFE" and "FIRE" positions. Never place your finger on the trigger unless you intend to fire.



Commandment #4

Be Sure of Your Target - And What Is Beyond It!

Once fired, a bullet (or shot charge) can never be called back; so before you shoot, know where the bullet is going and what it will strike. Be certain your shot will not injure someone or strike something beyond the target. Never fire in the direction of noise, a movement or at any object you cannot positively identify. Be aware that a .22 Short bullet can travel over 1 ¼ miles. A centerfire cartridge, such as the .30-06, can send its bullet over 3 miles. pellets can travel 500 yards and a shotgun slug has a range of over a half mile. Make sure your shot has a safe backstop such as a hillside. Keep in mind how far the bullet will travel if it misses your intended target. Never shoot at a hard surface or water as the projectile may glance or ricochet in an unpredictable direction. Once fired, a bullet can never be called back. You are responsible for your actions and judgment.



Commandment #5

Use the Correct Ammunition

Every firearm is designed to use a certain caliber or gauge of ammunition. It is important that you use the correct ammunition for your firearm. Information on the correct ammunition to use with your firearm appears in the firearm's instruction manual and the manufacturer's markings on the firearm itself. Use of the wrong ammunition, improperly reloaded ammunition or corroded ammunition can result in the destruction of the firearm, serious personal injury and/or death. Form the habit of examining every round of ammunition before you put it into your gun to ensure it is of the proper gauge or caliber and that it is in good condition.





Commandment #6

If Your Gun Fails to Fire When the Trigger Is Pulled, Handle With Care
If a cartridge or shell does not fire when the trigger is pulled, follow **Commandment #1** and keep the firearm's muzzle pointed in a safe direction. Keep the muzzle down range with the action closed and wait at least 30 seconds (to ensure that the ammunition is not delayed in firing) before carefully opening the action, unloading the firearm and safely disposing of the ammunition.



Commandment #7

Always Wear Eye and Ear Protection When Shooting

Exposure to shooting noise can permanently damage hearing. Flying debris, such as powder residue and ejected cartridge cases, can injure your eyes. Thus, it is only common sense to wear both eye protection (such as shooting glasses) and ear protection (such as a sound-muffling headset) whenever shooting. Also, wear eye protection when cleaning or disassembling your gun to ensure that cleaning solvent and tensioned parts (such as springs) do not come into contact with your eyes.



Commandment #8

Be Sure the Barrel Is Clear of Obstructions Before Shooting Discharging a firearm with an obstruction in the barrel can result in personal injury, property damage and/or death. Before you load your firearm, check the chamber and magazine to ascertain that no ammunition is inside. Also, check the inside of the barrel (called the "bore") to ensure it is free of obstructions. Even a small amount of mud, snow or excess lubricating oil or grease in the bore can cause excessive pressures resulting in a bulged or burst barrel which can injure or kill the shooter and bystanders. It is a good idea to make a habit of cleaning the bore and checking for obstructions with a cleaning rod just before each shooting session. If the noise or recoil experienced upon firing seems low or weak, or something doesn't feel "right," cease firing immediately and carefully check to make sure that there is no obstruction in the barrel. Placing an undersized shell or cartridge into a gun (such as a 20 gauge shell in a shotgun chambered for 12 gauge ammunition) can result in the smaller round of ammunition falling into the barrel and acting as an obstruction. When a round is subsequently fired, the barrel may burst, causing injury to the shooter and bystanders. For reference, re-read Commandment #5.



Commandment #9

Do Not Alter or Modify Your Gun and Have It Serviced Regularly

Firearms are complex mechanisms that are designed to function properly in their original condition. Any alterations or changes made to a firearm after its manufacture can make the gun unsafe and will void its warranty. Do not jeopardize your safety or the safety of others by altering the trigger, mechanical safety or other mechanisms of your firearm. You should have your firearm periodically checked for proper functioning and serviced by a qualified gunsmith.



Commandment #10

Learn the Mechanical and Handling Characteristics of Your Firearm

Not all firearms operate the same way. The method of carrying, handling and operating firearms varies with the mechanical characteristics of each gun. Thus, you

should never handle any firearm until you become familiar with the safe handling, loading, unloading and carrying procedures for that particular firearm, as well as the rules for safe gun handling in general.



LEAD WARNING!

Discharging firearms in poorly ventilated areas, cleaning firearms or handling ammunition may result in exposure to lead and other substances known to cause birth defects, reproductive harm and other serious injuries. Have adequate ventilation at all times when shooting. Wash hands thoroughly after exposure.

Basics of Safe Gun Handling

1. Always keep the muzzle pointed in a safe direction.
2. Firearms should be unloaded when not actually in use.
3. Don't totally rely on your gun's safety.
4. Be sure of your target and what is beyond it.
5. Use the correct ammunition for your firearm.
6. If your gun fails to fire when the trigger is pulled, handle with care.
7. Always wear eye and ear protection when shooting and cleaning.
8. Be sure the barrel is clear of obstructions before shooting.
9. Don't alter or modify your firearm and have your firearm(s) serviced regularly.
10. Learn the mechanics and handling characteristics of the firearm you are using.

Safe gun handling depends on you! A safe shooter is a knowledgeable shooter.



WARNING! STOP SHOOTING IMMEDIATELY AND UNLOAD YOUR FIREARM if your firearm develops a mechanical malfunction; binding or stoppage, spitting powder/gas, a cartridge primer is punctured, a cartridge case is bulged or ruptured, or the sound on firing does not sound quite right. Do NOT try one more shot, but unload your firearm and take it and the ammunition to a qualified gunsmith or send it back to your dealer for examination. Do not assume that the firearm is empty merely because you checked the chamber. You must also check the bore for any fired bullet jammed inside the barrel.



WARNING! Always ensure that the ammunition you are using is clean, undamaged and of the proper caliber before loading your shotgun. The manufacturer and distributor of this firearm disclaim any liability for the use of remanufactured, reloaded or hand-loaded ammunition. Protect your investment in this fine firearm by using only factory fresh, quality ammunition. The use of improper caliber or low quality ammunition could result in injury, death and/or property damage upon firing. Remember, firearms safety depends on you!

Specifications:

Action : Single Barrel

Gauge : .410 cal

Chamber : 3 inches (76 mm)

Barrel : 4140 stainless steel. Inner surface is hard white chromium plated, outer surface is black chromium plated

Barrel Length : 18 – 20 – 22 -24 inches

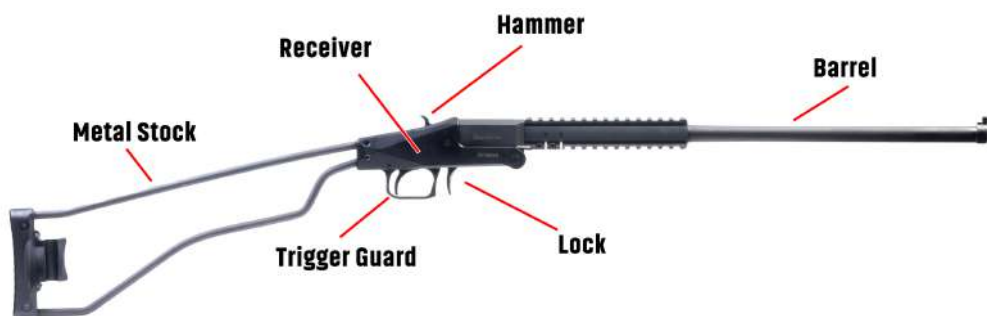
Overall Length : 35,8 inches open stock, 21,3 inches closed stock

Average Weight : 3,3 lbs

ABOUT YOUR SURVIVOR

The Survivor is a lightweight survivalist firearm designed and manufactured on state of the art machinery to provide reliability, durability, and security in a wide range of environments.

As a safety measure, the gun is equipped with «rebounding» type hammer. So it will not rest directly against the back of the firing pin when at rest. The trigger must be depressed to allow the hammer to make contact with the firing pin to discharge the cartridge. This exposed hammer shotgun requires your full attention when lowering the hammer on an unfired shell. Always unload the chamber before decocking the shotgun. To decock a hammer, you must point the muzzle in a safe direction; completely controlling the hammer, pull the trigger and ease the hammer gently forward. Never allow the hammer to snap forward. The gun may discharge. This shotgun has no manual safety.





WARNING! Before loading, make sure the inside of the barrel is free of dirt or other obstructions. We recommend passing a cleaning rod with brush attached down the bore before shooting.

WARNING! Always check each shot shell to ensure it is of the correct gauge and in good condition before loading the firearm.

WARNING! Never load a firearm indoors. An accidental discharge will cause property damage, serious injury and/or death! Never use live ammunition to function test your shotgun indoors.

WARNING! Keep fingers away from the trigger while loading.

WARNING! Keep muzzle pointed in a safe direction.

LOWERING THE HAMMER

1. Only lower hammer with the action open, keeping the muzzle pointed in a safe direction, carefully hold the hammer back securely with your thumb and pull the trigger.
2. Slowly let the hammer move forward approximately 1/8 inches, then release the trigger.
3. Continue to let the hammer down until it is fully forward.
4. Practice this procedure with an empty firearm until you are thoroughly familiar with it.



LOADING THE SHOTGUN WARNINGS:

Before loading, Keep muzzle pointed in a safe direction make sure the inside of the barrel is free of dirt or other obstructions.

Always check each shell to ensure it is of the correct gauge and in good condition before loading the firearm.

Keep fingers away from the trigger while loading.



HOW TO LOAD AND UNLOAD.

Point the firearm in a safe direction (**fig.1**). Pull the lock back and push the barrel downward to open the shotgun. Place one loaded shell of the correct gauge into the chamber of the barrel (**fig.2**). Close the barrel keeping the firearm pointed in a safe direction all the times. The firearm is now loaded and ready to fire.

(fig.1)



(fig.2)



1. To fire the shotgun, pull the hammer to the rear fully until it is cocked, keeping the **10 Commandments of Firearm Safety** in mind, aim the shotgun downrange at the target. When firing this shotgun you may need to experiment with different shooting styles until you find the method which best suits your sporting activity. Pull the trigger to fire the gun, remember to always fire the shotgun in such a manner that you can maintain a safe muzzle direction and keep your sight aligned with the target.
2. After aligning the sights on your target, place your finger inside the trigger guard and on the trigger.
3. Slowly pull the trigger fully rearward to fire the first round.



WARNING! If dropped, any firearm could fire when there is a cartridge in the chamber and the safety lever is in the "FIRE" position.

WARNING! The barrel will be very hot after firing!

WARNING! Keep your fingers away from the muzzle!

WARNING! Always unload your shotgun immediately after use and prior to cleaning and storage to minimize the risk of an accidental discharge. If your shotgun ever fails to fire keep it pointed at the target for at least 30 seconds in the event of a hangfire (slow ignition). If the round still does not fire, remove and discard the bad round. Reload the shotgun to resume firing.

UNLOADING

1. Point the firearm in a safe direction. Pull the lock back and push the barrel downward to open the shotgun. Extract the loaded shell out of the chamber of the barrel.
2. Close the barrel keeping the firearm pointed in a safe direction at all times. The firearm is now unloaded and ready to store.





WARNING! Before beginning the cleaning process, check to ensure the shotgun is unloaded. (See the Unloading the Shotgun section on page)



WARNING! You should wear eye protection, such as shooting glasses or goggles, when cleaning your firearm to protect your eyes from tensioned parts, such as springs, that may become dislodged during disassembly.

CLEANING

Before beginning the cleaning process, check to ensure the shotgun is unloaded. You should wear eye protection, such as shooting glasses or goggles.

1. Obtain a quality shotgun cleaning kit and thoroughly review the manufacturer's instruction
2. To clean the barrel, select the correct caliber cleaning brush and attach it to a cleaning rod.
3. Dampen the brush with gun cleaning solvent and then push the brush through the barrel several times.
4. Remove the brush and attach a correctly sized cloth cleaning patch to the cleaning rod and push it through the barrel several times to remove loosened fouling.
5. Repeat this process with the brush and cleaning patches until a final patch comes out clean after swabbing the bore. Lightly oil the bore.
6. Remove shooting residue from the shotgun's action parts and outer surfaces by wiping them with a soft cloth dabbled in gun cleaning solvent. Then be sure to remove all excess solvent and dry them.
7. Finally, wipe down all outer surfaces with a soft cloth dipped in a good quality gun oil.



WARNING! There may be sharp edges on parts of the firearm. Keep your fingers protected by wearing a pair of protective gloves when cleaning.

WARNING! Excessive use of cleaning solvents or lubricants can adversely affect your rifle's functioning. Wipe the inside of the barrel dry before firing and ensure that it is free of obstructions.

WARNING! Some cleaning solvents produce hazardous vapors. Read and follow the solvent manufacturer's cautions found on the product's package.

WARNING! Handling ammunition and cleaning firearms results in exposure to lead and other substances that can pose health risks. Wash your hands and face after firing your shotgun or after cleaning it.

WARNING! This firearm should be checked periodically for worn or damaged parts by a competent gunsmith. This will help ensure its safe functioning and a long service life.

Cleaning Intervals

Always clean your shotgun as soon as possible after firing to prevent buildup of shooting residue and to prevent corrosion from starting. To maintain your shotgun in good working order, it should be cleaned regularly even if it has not been fired. If you live in a low-humidity area, this may mean doing a full cleaning once or twice a year; but if you live in a high-humidity area, it may be necessary to clean your shotgun as often as once a week.

NOTE: *In freezing weather (below 32° F. or 0° C.), the use of a dry lubricant (instead of oil) for lubrication may work better.*



Lubrication Warning

Firing a firearm with oil, grease or any other material even partially obstructing the bore may result in damage to the firearm and injury to the shooter and those nearby. Do not spray or apply lubricants directly on ammunition. If the powder charge of a cartridge is affected by the lubricant, it may not be ignited, but the energy from the primer may be sufficient to push the bullet into the bore where it may become lodged. Firing a subsequent bullet into the obstructed bore will damage the firearm and may cause injury to the shooter and those nearby. Use lubricants properly. You are responsible for the proper care and maintenance of your firearm and ammunition.

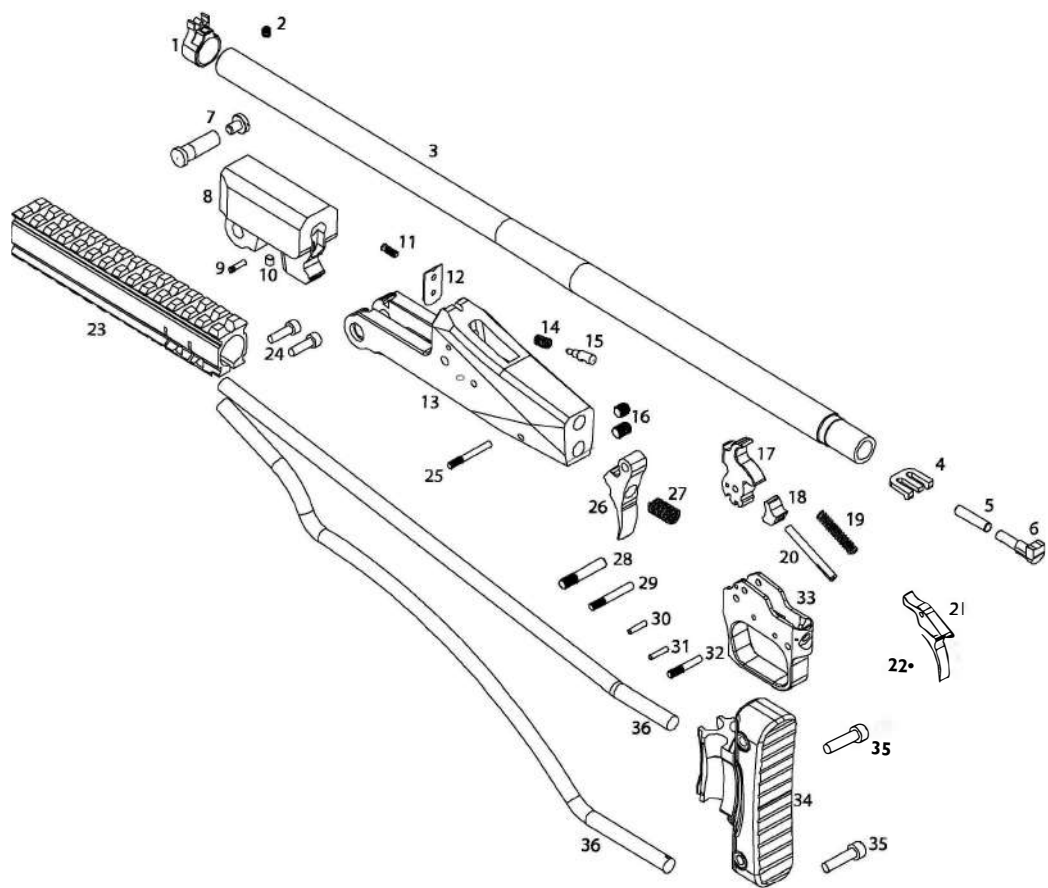


Warning Concerning Alterations and Aftermarket Parts! Altering or modifying parts and/or internal safeties is dangerous and will void the warranty. This firearm was manufactured to perform properly with the original parts as designed. It is your duty to make sure any parts you buy are made for this firearm and are installed correctly and that neither the replacements nor originals are altered or changed. Your gun is a complex precision tool with many parts that must relate correctly to other parts in order for proper and safe operation. Putting a gun together wrong or with incorrect or modified parts can result in a damaged gun, danger, and injury or death to you and others through malfunction. Always have a qualified gunsmith work on your gun or at least check any work not performed by a gunsmith.

Storage

Your shotgun should be thoroughly cleaned and lightly lubricated before being put away for storage. A light coating of good quality gun oil should be applied to all exposed surfaces. Remove all excess lubrication and use a cleaning rod and cleaning patch to make sure that the bore (the inside of the barrel) is dry and free of obstructions when you remove your shotgun from storage and before firing it. **CHECK TO ENSURE THAT YOUR shotgun IS NOT LOADED BEFORE STORING IT. ALWAYS STORE FIREARMS AND AMMUNITION SEPARATE FROM EACH OTHER AND OUT OF REACH OF CHILDREN. ALWAYS SECURELY LOCK YOUR FIREARMS WHEN NOT IN USE. REFERENCE YOUR HOME STATE'S FIREARMS REGULATIONS FOR SAFE STORAGE OF FIREARMS AND AMMUNITION. INSURE YOUR FIREARM IS UNLOADED BEFORE INSTALLING ANY LOCKING DEVICE. YOU COULD BE HELD CIVILLY OR CRIMINALLY RESPONSIBLE IF A CHILD OR UNAUTHORIZED ADULT MISUSES YOUR FIREARM.**

NOTE: The use of reloaded, remanufactured, wrong caliber, hand-loaded or other non-standard ammunition may result in damage to the shotgun and injury or death to the shooter and/or bystanders. The manufacturer does not accept responsibility for malfunctions resulting from use of such ammunition.



1 FRONT SIGHT
2 FRONT SIGHT SCREW
3 BARREL
4 EXTRACTOR LEVER
5 EXTRACTOR FORWARDER PIN
6 EXTRACTOR
7 RECEIVER PIN
8 MONO BLOCK
9 EXTRACTOR PIN
10 EXTRACTOR SCREW
11 RECEIVER WEDGE PLATE SPRING 12 RECEIVER WEDGE PLATE 13 RECEIVER
14 FRING PIN SPRING
15 FRING PIN
16 METAL STOCK FIXED SCREW
17 HAMMER
18 HAMMER LEVER
19 HAMMER SPRING
20 HAMMER SPRING PIN
21 TRIGGER
22 TRIGGER SPRING
23 FOREND
24 FOREND SCREW
25 TRIGGER GUARD PIN
26 LOCK
27 LOCK SPRING
28 LOCK PIN
29 FRING PIN FIXING PIN
30 HAMMER PIN
31 TRIGGER PIN
32 TRIGGER RETAINING PIN
33 TRIGGER GUARD
34 RECOIL PAD
35 METAL STOCK FIXED SCREW 36 SPRING STEEL ROD STOCK

Limited Parts Replacement Warranty

The Survivor is warranted to be free of manufacturing defects for a period of one year from the original date of purchase of the Survivor from a licensed firearms retailer. The warranty only applies to the first retail purchaser and is not transferable or assignable. Proof of purchase must be presented at the time any warranty claim is made. This is a one-year warranty limited to replacement of improperly manufactured parts. Any alterations, modifications, abuse, misuse, or discharge of poor quality, corrosive, or defective ammunition voids the warranty. **ETERNAL ARMS WILL NOT BE RESPONSIBLE FOR INCIDENTAL OR CONSEQUENTIAL DAMAGES WITH RESPECT TO ECONOMIC LOSS, INJURY, DEATH, OR PROPERTY DAMAGE, WHETHER AS A RESULT OF BREACH OF WARRANTY, NEGLIGENCE, OR OTHERWISE.**



FACTORY:

**Hacıakif Mah. Ozdilek Cad. 86/B , Beysehir
42700 KONYA**

TURKEY

export@eternalarms.com.tr

www.eternalarms.com.tr